

# SOUND SYSTEMS

MOTORHOME • CARAVAN • VAN • LINER

2022

**JEHNERT**  
*Sound Design*  
A U T O M O T I V E





# TABLE OF CONTENTS

	page
<b>About us</b>	
Partner and references	3
Competencies	4
High quality materials	5
Precise craftsmanship	6
<b>About our products</b>	
Speaker integration	7
Sound systems for retrofitting	8-9
Perfect sound	10
Hifi Know-How	11
plug & play briefly explained	30
<b>Loudspeakers, amplifiers, subwoofers, accessories</b>	
Loudspeaker overview	12-14
Amplifiers	15-16
Amplifier accessories	17-19
Subwoofer	20-23
Bluetooth Speaker	24
Living room speakers	26-29
<b>Vehicle specific sound systems</b>	
Fiat Ducato / Citroën Jumper / Peugeot Boxer	31-35
Mercedes Sprinter	37-41
Mercedes Marco Polo	42
Mercedes Sprinter Integrated models	43
VW T5 / T6 / T6.1 / California	44-46
VW Crafter	47
Iveco Daily	48
Ford Transit / Tourneo »Custom«	49-53
Carthago motorhomes	54-55
Integrated motorhomes »Liner Class«	56-57
Integrated motorhomes	58-59
Iveco Eurocargo / MAN TGL / Mercedes Antos	60
Crosscamp	61
Caravan & motorhomes	62-63

SOUND EXPERIENCE ON THE ROAD





Individual consulting is part of our everyday life.  
We advise and look after our customers all personally, individually and with the greatest care.



JEHNERT SOUND DESIGN has specialized in innovative sound solutions in automotive acoustics for over 30 years. With the development and production of exclusive sound systems and individual installation solutions, the brand name JEHNERT® established itself worldwide. Quality awareness, creativity, perfection in craftsmanship and state-of-the-art technology, characterize the company's development and satisfaction of demanding customers.

The intensive cooperation with the automotive and recreational vehicle industry is one of the most important prerequisites for the many years of success and for the best references.

*We create worlds of sound - get in!*

## Our partners and references



# COMPETENCIES

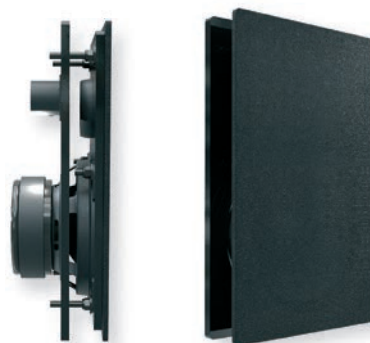
## ... in sound

It is not enough to simply replace loudspeakers to achieve a high level of sound quality and a significant improvement in sound. The acoustically correct placement and individual tuning is decisive for a good sound result. Unique in the aftermarket, JEHNERT Sound Design develops and produces "vehicle-specific sound systems" as standard.

## ... and design

The space available at the factory is usually very limited. To accommodate loudspeakers, an installation solution is required that goes beyond conventional methods in automotive acoustics. JEHNERT sound systems are unique in construction and design. Stylish design lines and details of the interior are continued in the body elements. With their elegant design and refined appearance, the sound modules fit seamlessly and beautifully into the vehicle or living room interior. With minimal space requirements, they realize the visually inconspicuous integration of a complete loudspeaker system.

- **first-class sound quality**
- **perfect integration**





# HIGH QUALITY MATERIALS

## Standard cover materials

All speaker mounts are covered with optically corresponding or original imitation leather. The standard color included in the scope of delivery can be found in the price list. Special colors and genuine leather upholstery are available on request at extra cost. The loudspeakers are completely concealed with flush-fitting panels, providing optimum protection against damage and theft. The panels are covered with durable and lightfast acoustic fabric.



## Customized cover materials

In our in-house saddlery, high-quality materials and perfect workmanship meet even the highest requirements of our customers.

The design variants are almost limitless. Shape, color and material of the speaker boxes and covers are always harmoniously matched with the living ambience and thus let the speaker boxes become a home accessory!

- **noble ambience**
- **finest craftsmanship**



Sonderfarben, Kunst- oder Echtlederverarbeitung bis hin zu eingearbeiteten Ziernähten werden so individuell ausgeführt, wie Sie es wünschen.

# PRECISE CRAFTSMANSHIP

## A perfect fit guaranteed!

With the highest level of craftsmanship, the master models for toolmaking are made to fit and measure in our in-house model carpenter's shop.

In series production, each speaker mount is prepared for the saddlery work in precise manual work. Every cut edge of a series molded part for the driver's cab is checked on the original dashboard, **thus guaranteeing 100% accuracy of fit.**

## Material & Quality

JEHNERT-sound modules are mainly produced from GRP. GRP is characterized by low weight, high load capacity as well as corrosion and weather resistance. resistance to corrosion and weathering. Since GRP breaks bluntly, this material also ensures a high degree of safety.

In the design and manufacturing area, the latest technology and qualified employees are the basis for meeting the uncompromising demands of our quality assurance. 100% quality in material and design are the promise for our customers!

- **low weight**
- **very high corrosion resistance**
- **high level of safety**
- **highest quality**





# LOUDSPEAKER INTEGRATION

## Loudspeaker integration in the driver's cab

### The dashboard as a sound stage

Acoustic fine-tuning determines the exact position for the midrange and tweeter. If there are no installation options at the factory, customized loudspeaker mounts enable a wide-ranging stage to be created in the dashboard. Powerful woofers in the side panels complete the sound concept in the cab. Vehicle acoustic tuning gives the front system its individual sound character and perfect sound quality.



*Mid-high module under the lift bed (Concorde)*



*Mid-treble module integrated in dashboard (Carthago "Highliner")*



*Mid-high module on the dashboard (Mercedes Sprinter)*



*Mid-high module on the dashboard (Dethleffs)*



*Mid-high module on the A-pillar (Mercedes Sprinter)*

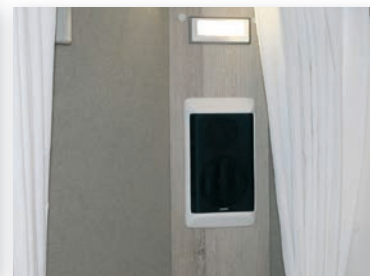
## Speaker integration in the living area

### »Brilliant sound« and »perfect integration«

For the living area, the sound concepts range up to the 5.1 surround system. Through innovative design, the living room boxes harmoniously complement the homely ambience. According to the exclusive living room decor, the design developments of the living room boxes are adapted and refined with exclusive details. Due to the individual construction in each case, versatile assembly and installation possibilities are realized. The design variants are almost limitless. Shape, color and material of the speaker boxes and covers are always harmoniously matched to the living ambience.



*Plex drawer in the switching area next to TV*



*Multibox 5500 flat mounted*



*Multibox 5500 in the sleeping area*



*Living room box 7000 mounted*



*Multibox 6100 in the living area - entrance area -*

# SOUND SYSTEMS FOR RETROFITTING

## Our services



### Sound ... & more !

Everything for the good sound: first-class speaker systems - also for TV connection, subwoofers with minimal space requirements and technically advanced digital amplifiers. Sound systems for the driver's cab and living area turn the recreational vehicle into a concert hall.



### Car Radio, Multimedia ... & more !

Whether radio or navigation system - from the inexpensive car radio for the basic vehicle equipment to the digital sound miracle for spoiled Hifi ears. The mobile multimedia center shows not only the right way but also movies for the passenger - digitally and in full cinema sound.



### Antenna ... & more !

Guaranteed best reception and transmission characteristics: State-of-the-art antennas from leading brand manufacturers are the most important link in mobile communication.



### Bluetooth... & more!

For the flexible use of current streaming services as well as the realization of a mobile network, various solutions, for every requirement.

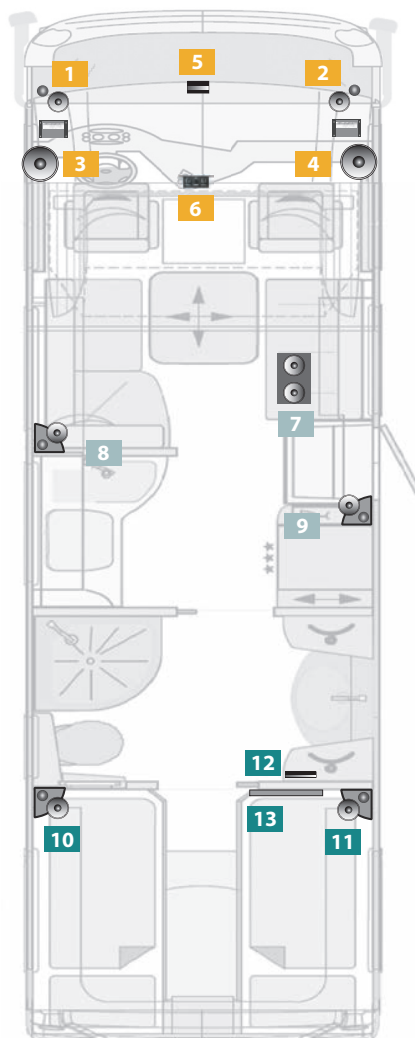


### Individual installation solutions ... & more !

The right solution for any space: vehicle-specific installation solutions for the driver's cab and living area boxes in an elegant design harmoniously match the living area design with minimal space requirements.



## Example of sound concept for driver's cab and living area



1 2

A high-quality driver's cab system, in a coordinated listening position for driver and passenger, optimizes the sound characteristics in the mid-high range of the cab.

3 4

The JEHNERT Power Woofer "XM165" in the driver's cab provide a perfect for a perfect basic sound range

5

The digital 5-channel DSP amplifier controls - actively calibrated - the high-quality sound components with precise frequency responses.

6

With the help of the amplifier controller, the intensity of the subwoofer as well as the switching between driving and living mode can be optimally controlled.

7

The space-saving subwoofer is installed in the storage space under the seating area and provides warm, pleasant bass support for the sound event.

8 9

Vertically mounted and angled 2-way speaker cabinets radiate directly - without reflections - to the listener.

10 11

Space-saving corner boxes allow pleasant voice and music playback of the flat screen TV.

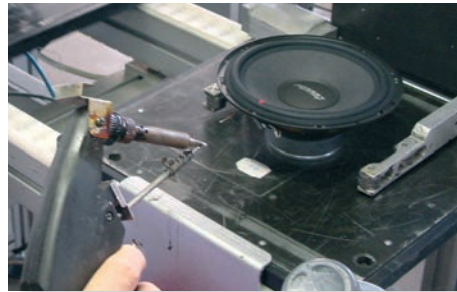
12 13

The "plug & play" 4-channel amplifier is fed via the flat screen TV.

# PERFECT SOUND

## Loudspeakers and crossovers:

Our loudspeakers are constantly subject to sound and technical developments. Over the years, this has resulted in loudspeakers that achieve excellent sound results in automotive acoustics due to their parametric values. A JEHNERT sound system is always exactly and individually tuned to the vehicle type. Unique on the aftermarket, we develop and produce »vehicle specific crossovers«.



## The frequency response adjustment

### Sound field - vehicle interior:

In general, unfavorable acoustic conditions prevail in the vehicle, which are also different in each vehicle type. The limited interior space, design and materials, for example, lead to vehicle-specific reflections that can significantly impair sound transmission and music reproduction. Even the highest-quality loudspeakers are severely limited in their performance and sound quality if the interior acoustics are not taken into account. Whether the qualities of the drivers can be fully appreciated depends crucially on the crossover.

### Sound image:

Extensive measurement studies yield the decisive parameters for a perfect sound image. In sensitive precision work, crossovers are developed, for which there are no standardized calculation formulas.

### Sound quality:

High-quality electronic components and a precisely determined circuitry achieve brilliant sound qualities.

## The secret of good sound is the acoustic frequency response adjustment:

### The »electronic« adjustment

A test signal determines the frequency response in the listening position in the vehicle. In this way, frequency response errors can be detected. Sophisticated measurement technology is used to test and determine the dispersion angle of the loudspeakers, circuit options and parameters.

### The adjustment through hearing tests

In the end, the trained ear is the most sensitive evaluator for a harmonic sound tuning. The acoustical fine tuning of the "theoretically" calculated values and correction of residual transmission errors is therefore carried out through lengthy listening tests.



**MADE IN  
GERMANY** 



# SMALL HIFI KNOW-HOW

## Speaker drivers: tweeter, midrange and woofer

In order to reproduce the complete sound spectrum even in the smallest space in a vehicle, the loudspeakers must be able to realistically reproduce the smallest nuances and subtleties. This is difficult with a single type of loudspeaker. Deep basses and brilliant highs therefore require different speaker types. A distinction is made between loudspeaker drivers:



High tones have a high frequency, i.e. a sound wave that oscillates very quickly. For this reason, small diaphragms are advantageous here. These can transmit fast vibrations precisely and clearly. Midrange drivers are optimized for the medium frequency range. The reproduction of speech and many instruments depends decisively on this range. Low frequencies require long sound waves, which can be optimally reproduced with a large diaphragm and a large cabinet.

## Crossover

Crossovers are used to divide the sound spectrum among the three loudspeaker components. Even the highest-quality loudspeakers are severely limited in their performance and sound quality if the interior acoustics are not taken into account. The crossover determines whether the qualities of the drivers can be fully appreciated.

High-quality electronic components and a precisely determined circuit ensure that the individual tones of a frequency range reach the loudspeaker designed for this purpose in a targeted manner. Extensive measurements provide the decisive parameters for a perfect sound image. The JEHNERT crossovers are developed in sensitive precision work specific to the vehicle.

The crossovers are connected between the amplifier and the loudspeaker chassis.

## Subwoofer

The task of a subwoofer is to support the low frequency range. A subwoofer must be combined with additional speakers, as it only produces low tones and bass. The development of JEHNERT subwoofers for motorhomes and caravans is not about sound pressure and decibels, but rather to achieve a clear, spirited sound dynamics and perfection of the room sound.

***Enjoy music lively and "noticeable" - without annoying vibration noise and booming bass.***

JEHNERT bass reflex subwoofers in various sizes were developed especially for recreational vehicles with limited space. Despite the small housing volume, these perform maximum sound quality. The connection is made via an amplifier, since a radio does not have the sufficient output power.

## amplifier

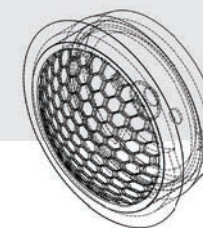
An audio amplifier is a broadband, low-distortion amplifier for AC voltages in the audible low-frequency range from 10 Hz to 23,000 Hz or higher. Audio amplifiers contain electronic circuitry that amplifies small audio signals, such as those from a car radio, so that they can be reproduced through a loudspeaker at higher power, usually with continuously adjustable volume.



### Why an "amplifier" is necessary for true musical enjoyment:

The output power of a radio is too low for powerful speaker chassis. To achieve the full power of a sound system, a separate amplifier is therefore required. It takes "the small" audio signals from a car radio, amplifies them, and then reproduces the signals with greater power and continuously adjustable volume through a speaker.

# JEHNERT SPEAKER PERFORMANCE



XE 19 G



## 19 mm neodymium soft dome tweeter

19 mm ferrofluid-cooled voice coil and a very linear frequency response

- the dome has an excellent omnidirectional response

XE 26



## 26 mm neodymium soft dome tweeter

26 mm fabric dome tweeter with protective grille and connection cable for easy and safe speaker connection • powerful neodymium magnet drive and ferrofluid-cooled voice coil guarantee high efficiency and high power handling • accurate and smooth high frequency reproduction

XE 55



## 55 mm neodymium midrange driver

Compact midrange driver with neodymium magnet drive, which due to its dimensions is particularly suitable for problematic installation locations, such as in the dashboard

- very linear frequency response.

XF 70



## 70 mm cone midrange driver

Compact midrange driver with neodymium magnet drive • especially suitable for problematic installation locations • very linear frequency response due to minimal moving mass • absolute impulse fidelity and very wide transmission range

## Technical data:

\* Values with crossover

Nominal load capacity: 60 Watt (@4.0 kHz)\* 12 db  
Music load capacity: 120 Watt (@1.5 kHz)\* 12 db  
Transmission range: 3.000 - 22.000 Hz\*  
Impedance: 4 Ohm  
Sound pressure level: 88 db  
Equivalent volume: ---  
Resonant frequency: 1.500 Hz

Mechanical grade: ---  
Electr. quality: ---  
Total quality: ---  
Magnet material: Neodym  
Basket diameter: 34,2 mm  
Installation depth: 6,7 mm  
Installation depth: 32 / 34,2 mm

Nominal load capacity: 300 Watt (@4.0 kHz)\* 12 db  
Music load capacity: 400 Watt (@4.0 kHz)\* 12 db  
Transmission range: 1.500 - 25.000 Hz\*  
Impedance: 4 Ohm  
Sound pressure level: 92 db  
Equivalent volume: ---  
Resonant frequency: 1.300 Hz

Mechanical grade: ---  
Electr. quality: ---  
Total quality: ---  
Magnet material: Neodym  
Basket diameter: 54 mm  
Installation depth: 16 mm  
Installation depth: 48 mm

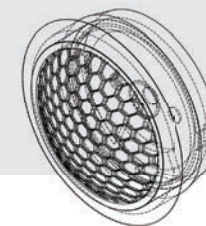
Nominal load capacity: 100 Watt (@240 kHz)\* 12 db  
Music load capacity: 200 Watt (@240 kHz)\* 12 db  
Transmission range: 210 - 20.000 Hz\*  
Impedance: 4 Ohm  
Sound pressure level: 90 db  
Equivalent volume: 0,16 dm<sup>3</sup>  
Resonant frequency: 239 Hz

Mechanical grade: 4.6  
Electr. quality: 0.8  
Total quality: 0.7  
Magnet material: Neodym  
Basket diameter: 58 mm  
Installation depth: 18,5 mm  
Installation depth: 49 mm

Nominal load capacity: 120 Watt (@200 kHz)\* 12 db  
Music load capacity: 240 Watt (@200 kHz)\* 12 db  
Transmission range: 120 - 18.000 Hz\*  
Impedance: 4 Ohm  
Sound pressure level: 92 db  
Equivalent volume: 0,16 dm<sup>3</sup>  
Resonant frequency: 108 Hz

Mechanical grade: 4.3  
Electr. quality: 0.72  
Total quality: 0.65  
Magnet material: Neodym  
Basket diameter: 72 x 72 mm  
Installation depth: 36 mm  
Installation depth: 61 mm





## Technical data:

\* Values with crossover

XE 80



### 80 mm midrange driver

High-quality scooped paper diaphragm with coating to suppress diaphragm resonance • high power handling thanks to 19 mm voice coil with an aluminum carrier.

Nominal load capacity:	150 Watt (@200 kHz)* 12 db
Music load capacity:	300 Watt (@200 kHz)* 12 db
Transmission range:	95 - 16.000 Hz*
Impedance:	4 Ohm
Sound pressure level:	90 db
Equivalent volume:	0,89 dm <sup>3</sup>
Resonant frequency:	115 Hz

Mechanical grade:	4.53
Electr. quality:	0.8
Total quality:	0.68
Magnet material:	Ferrite
Basket diameter:	79,5 x 79,5 mm
Installation depth:	41 mm
Installation depth:	71,5 mm

XE 100



### 100 mm midrange driver

High-quality scooped paper diaphragm with sand coating to suppress diaphragm resonances • the rubber surround is designed for maximum excursion and durability • very high power handling due to 26 mm voice coil with aluminum support

Nominal load capacity:	200 Watt (@200 kHz)* 12 db
Music load capacity:	300 Watt (@200 kHz)* 12 db
Transmission range:	89 - 8.900 Hz*
Impedance:	4 Ohm
Sound pressure level:	92 db
Equivalent volume:	1,9 l
Resonant frequency:	89 Hz

Mechanical grade:	3.29
Electr. quality:	0.82
Total quality:	0.66
Magnet material:	Ferrite
Basket diameter:	102 mm
Installation depth:	51,8 mm
Installation depth:	94 mm

XM 110



### 100 mm high-end midrange

bayonet mounting ring for front and rear mounting • very stable and rigid polypropylene diaphragm to avoid natural vibrations  
• high light and aging resistance, durable solid rubber surround  
• absolute impulse fidelity and very wide transmission range due to minimum moving mass

Nominal load capacity:	200 Watt (@200 kHz)* 12 db
Music load capacity:	300 Watt (@200 kHz)* 12 db
Transmission range:	80 - 9.000 Hz*
Impedance:	4 Ohm
Sound pressure level:	89 db
Equivalent volume:	2,0 l
Resonant frequency:	98 Hz

Mechanical grade:	2.87
Electr. quality:	0.55
Total quality:	0.46
Magnet material:	Ferrite
Basket diameter:	100 mm
Installation depth:	43,10 mm
Installation depth:	90 mm

## XAC 100



### High quality 2-way COAX system

100 mm midrange driver with fiberglass cone

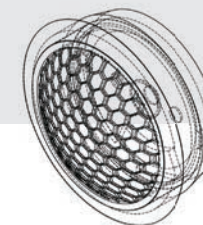
- 13 mm neodymium tweeter
- especially in the front area, crystal clear high frequency reproduction without sharpness and without negative resonances in the midrange

### Technical Data:

\* Values with crossover

Nominal load capacity:	60 Watt (@200 kHz)* 12 db
Music load capacity:	120 Watt (@200 kHz)* 12 db
Transmission range:	100 - 22.000 Hz*
Impedance:	3 Ohm
Sound pressure level:	88 db
Equivalent volume:	2,0 l
Resonant frequency:	90 Hz

Mechanical grade:	---
Electr. quality:	---
Total quality:	---
Magnet material:	Ferrite
Basket diameter:	100 mm
Installation depth:	47,35 mm
Installation depth:	91,48 mm



## XE 130 G



### 130 mm woofer-midrange

High-quality scooped paper diaphragm with sand coating to suppress diaphragm resonance • the rubber surround is designed for maximum excursion and durability • very high power handling through 26 mm voice coil with aluminum support • Resonant frequency lowered with an additional mass to produce bass at low volume depths to be able to generate

Nominal load capacity:	60 Watt
Music load capacity:	120 Watt
Transmission range:	55 - 8.000 Hz*
Impedance:	4 Ohm
Sound pressure level:	89 db
Equivalent volume:	4,26 dm <sup>3</sup>
Resonant frequency:	59,74 Hz

Mechanical grade:	3.41
Electr. quality:	0.68
Total quality:	0.57
Magnet material:	Ferrite
Basket diameter:	128,6 mm
Installation depth:	59,7 mm
Installation depth:	125 mm

## XM 165



### 165 mm "Power Woofer" low-midrange driver

*Successfully passes all tests of JEHNERT systems for many years and permanently withstands the enormously powerful performance.*

165 mm Euro standard chassis • high-quality rubber surround - UV-stabilized, specially coated paper diaphragm • Kapton voice coil former and pressure equalization opening in the pole core • rear-ventilated centering - extremely high load capacity • optionally with protective grille.

Nominal load capacity:	80 Watt (@200 kHz)* 12 db
Music load capacity:	160 Watt (@200 kHz)* 12 db
Transmission range:	45 - 5.000 Hz*
Impedance:	4 Ohm
Sound pressure level:	91 db
Equivalent volume:	14,0 l
Resonant frequency:	60 Hz

Mechanical grade:	4.29
Electr. quality:	0.85
Total quality:	0.71
Magnet material:	Ferrite
Basket diameter:	165 mm
Installation depth:	62,5 mm
Installation depth:	140 mm

# AMPLIFIER

## AMP V40 CampTec 4-channel amplifier

**The high-level 4-channel amplifier for radio, TV, smartphone and tablet.**

The compact and versatile JEHNERT® "Mini 4-channel amplifier" Amp V40 CampTec, convinces with its new innovative technology, easiest operation as well as a change of the desired music sources.

With a total power of 320 watts/2ohms, a speaker system front and rear can be easily operated or a front system including subwoofer. Thanks to the very innovative and efficient technology, the existing power supply of the radio can be used for the power amplifier.

(No external power supply necessary).

The amplifier is also switched on in TV mode by signal detection (no additional remote switch necessary).

- Radio connection: High power input for automatic power on.
- TV connection via AUX-In TV, jack input 0.1-5V adjustable
- BT connection via BT AUX-IN, jack input 0,1-5V adjustable
- 2x 3,5mm jack input - incl. 2m jack cable
- High-Level / RCA input as well as RCA input by plug & play snap-proof connections granted



Technical data	»AMP V40 CampTec« 4-channel amplifier with 2x jack and 4x high/low level input
Operating voltage	10 - 16 V
Output power at 14.4 V -RMS power @4/2 Ohm stereo	4x 40/80 Watt – @ 4 Ohm 4x 60/120 Watt –@ 2 Ohm
High pass filter (HPF) channel 3+4 infinitely variable	von 50 bis 4.000 Hz
Hochpassfilter (HPF) Kanal 3+4 stufenlos regelbar	von 50-400 Hz
Low pass filter (LPF) channel 3+4 infinitely variable	von 80 -2.500 Hz
Fuse	1x 15A
Dimensions (H x W x D)	45 x 162 x 80 mm
Amplifier Order no.	400g
article no.	11306
Mounting bracket Order no.	68510



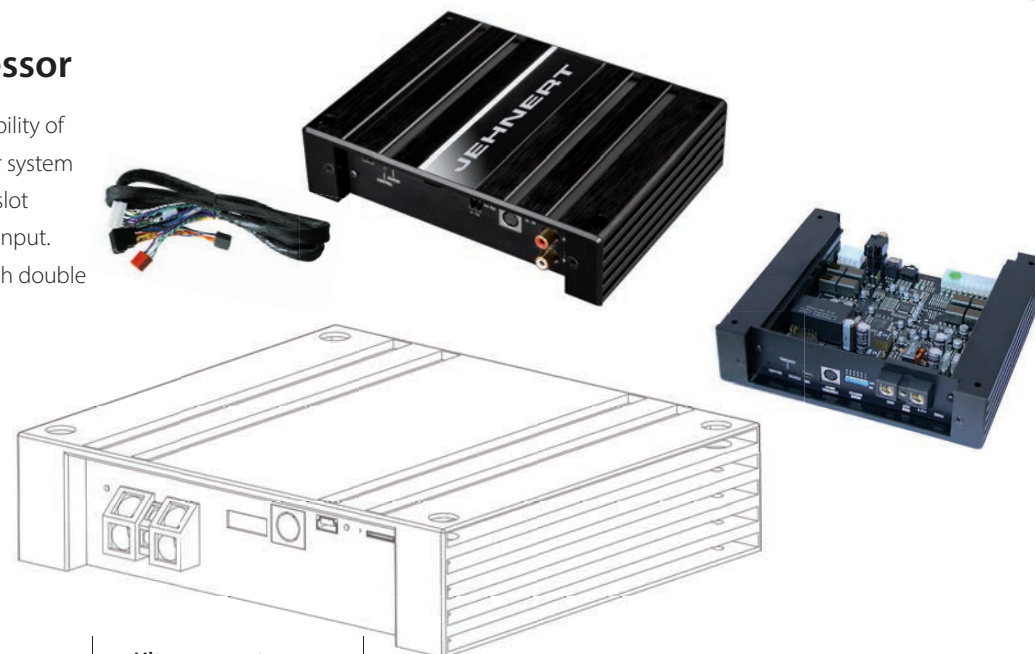
# DIGITAL AMPLIFIER

The turbo for your sound system!

## 5-channel amplifier "plug & play" with digital signal processor

The digital 5-channel amplifier is very power-saving, powerful and particularly versatile. It offers the possibility of finest frequency programming and has a 160 watt subwoofer output. The extensive "plug & play" adapter system allows easy connection to commercially available headunits/radios as well as TV sets. The extension card slot allows the unit to be expanded with additional interfaces such as Bluetooth® audio streaming or an AUX input. The amplifier is selectable in two power levels. For hifi purists, the high-performance amplifier (11086) with double the power offers even greater sound dynamics.

- Vehicle-specific setups reloadable via MicroSD memory card
- easy connection via ISO adapter
- enormous sound increase due to more power and 56/64 bit DSP technology
- start/stop capability up to 6 V supply voltage
- special "Plug & Play" active subwoofer output
- very low power consumption and extremely compact dimensions



Technical data	»Standard-« 5-channel amplifier	»High-Power-« 5-channel amplifier	Ultra compact mono amplifier for subwoofer
Load capacity duration / music »front & rear channels«	4x 35/ 70 Watt @4 Ohm	8x 55/ 110 Watt @4 Ohm	1x 200/ 400 Watt @4 Ohm
Load capacity duration / music »front & rear channels«	1x 160/ 320 Watt @2 Ohm	1x 280/ 560 Watt @2 Ohm	1x 300/ 600 Watt @ 2 Ohm
Power consumption in general / theoretical values:			
• High volume	15A / 240 Watt	20A / 240 Watt	
• Medium volume	8A / 120 Watt	10A / 120 Watt	
• Quiet volume	2A / 36 Watt	3A / 36 Watt	
Quiescent current	< 1 mA	< 1 mA	< 1 mA
Undervoltage detection	9,6 V (max. 5 Sek. bis hinab zu 6 V)	9,6 V (max. 5 Sek. bis hinab zu 6 V)	9,6 V (max. 5 Sek. bis hinab zu 6 V)
Power consumption in Power Save mode	< 250 mA	< 250 mA	
Transmission range	20 - 22.000 Hz	20 - 22.000 Hz	10 Hz - 40.000 Hz
Dimensions (H x W x D)	44 x 185 x 139 mm	44 x 185 x 166 mm	38 x 113 x 100 mm
weight	1.580g	1.840g	600g
article no.	11062	11086	11017



### DSP function:

For each vehicle, we develop, computerized, a specific setup and delivered individually pre-installed to each sound system .

# OPTIONAL ACCESSORIES

## – for digital amplifier

### Subwoofer control knob / setup switch

The universal wired remote control allows you to adjust various functions such as subwoofer intensity or input volume. The respective configuration options are installed with special software.

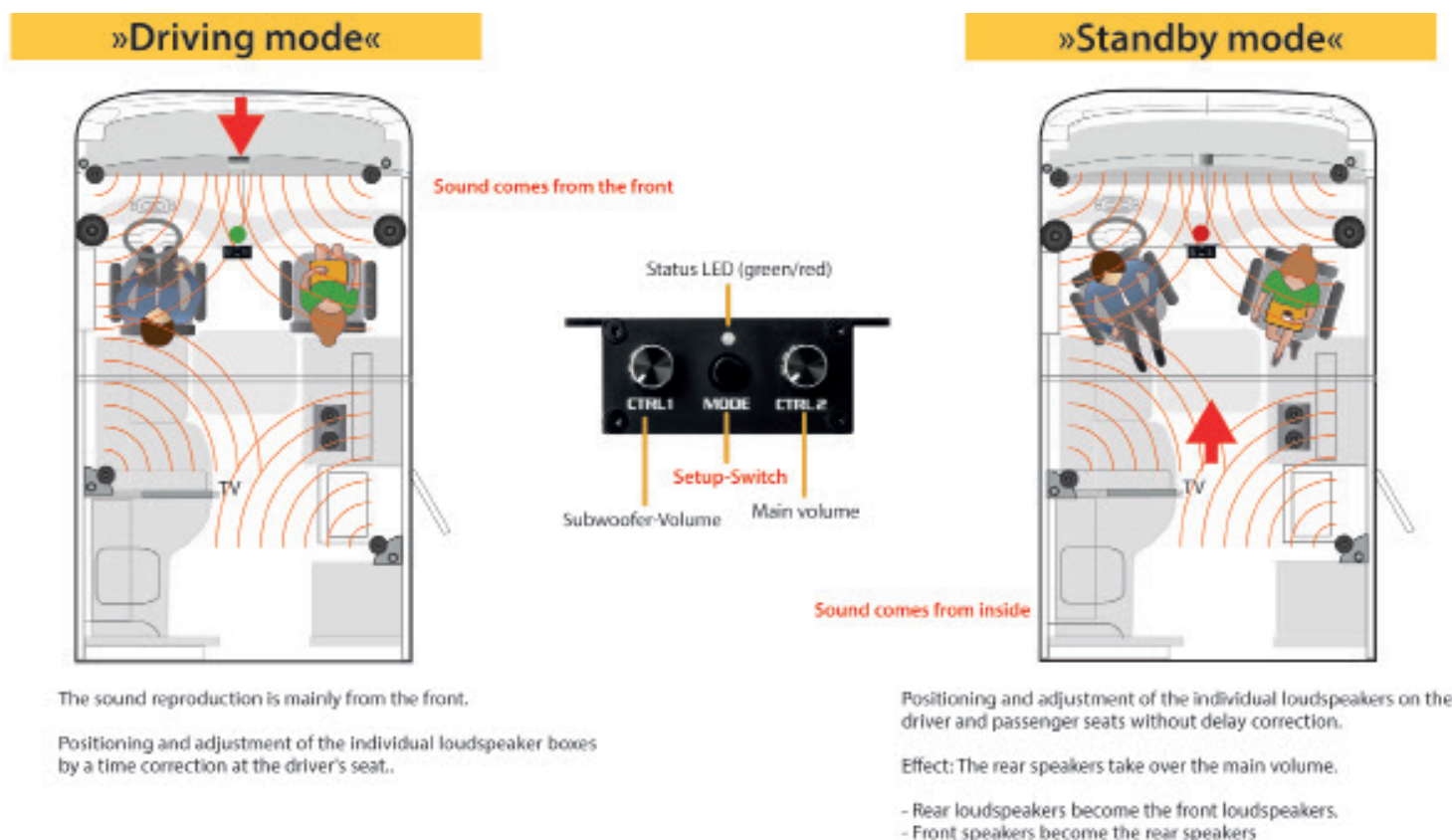
The remote control can be used to switch between two sound setups, for example.

This has the great advantage that the sound can be specifically adjusted for driving and stationary mode.

Note: To use the setup change, the amplifier must be specifically programmed.

- Different functions selectable
- allows switching between two sound setups
- 5,2m cable length.

Article no. 68495 (suitable for 5-channel amplifier p.16)



An optimally aligned sound system!

# OPTIONAL ACCESSORIES

## – for digital amplifier

### AUX-In or Bluetooth® integrated in the amplifier

The AUX or Bluetooth® module adds a Bluetooth® audio streaming function or an AUX connection to the amplifier.

Direct audio transmission in CD quality is possible. The connection directly to the amplifier, ensures lossless signal processing and thus unique sound performance.

- directly integrated in the amplifier
- lossless signal processing by direct transmission of the digital signals to the DSP

**Note:** For head units without a jack connection, the AUX module is required to connect a TV set. Optionally, an external Bluetooth module can be added (see p.19).

Technical data	AUX-Modul
Input sensitivity high level	1,5 - 30 Volt (adjustable)
Input sensitivity low level	0,5 - 8 Volt (adjustable)
Lowlevel input	3.5 mm jack
Additional features	ADEP3, Auto Remote function
Article no.	11062-AUX jack (standard amplifier)
Article no.	11086-AUX jack (high power amplifier)

Technical data	Bluetooth-Modul
Bluetooth®-Standard	v3.0 + EDR
Bluetooth®-Profil	A2DP
Bluetooth®-Codec	SBC und Qualcomm® aptX™
Number of paired devices	8
Wireless frequency bandwidth	2402 ~ 2480 MHz
Range	Up to 10 m
Optical digital output	SPDIF mit 48 kHz / 24 Bit
Article no.	11062-BT (standard amplifier)
Article no.	11086-BT (high power amplifier)



### Conductor

#### Sound setup change according to your music taste

With the rotary knob CONDUCTOR all important functions of the (DSPs) sound system can be from volume control, signal source selection and setup change, up to the control of the optional Bluetooth module. Manage different optimized sound profiles of your DSP for rock, pop, classical or absolutely pure and enjoy your music always with optimal sound quality. Thanks to its compact design, the CONDUCTOR can be integrated almost seamlessly into the existing vehicle interior and thus fits inconspicuously into its appearance.

- Up to 4 volume menus configurable (Master, Digital, AUX, Subwoofer, Rear Attenuation)
  - Volume range selectable (60 dB, 24 dB, 12 dB)
  - Volume steps selectable (1 dB steps, 0.5 dB steps)
  - Individual color configurable for each volume menu
  - Intuitive control of Bluetooth playback and pairing function (only for devices with optionally installed Bluetooth Extension Card)
  - 12 x RGB LEDs for visual feedback
  - Brightness and automatic dimming function configurable
  - Flush installation with Ø 40mm hole cutout
  - 5m cable harness - split in two for easy installation.
- No separate power supply needed
- Fully upgradeable and configurable with DSP PC tool
  - Up to 12 sound setups configurable



Technical data	
Case	ABS case with aluminum knob
Hardware	Rotary encoder 12 x RGB LEDs & 48MHz ARM processor
Connection	MiniDIN or NanoFit
Cable length	5m separable into 4.8 m connection cable + 0.2 m CONDUCTOR cable
Article no.	11025



## Bluetooth® - Receiver

### Music streaming without bluetooth receiver

Transfer music applications from your smartphone or tablet to your hifi system. Especially for vehicles with 12 V electrical system. The Bluetooth® receiver allows music to be played directly on the HiFi system / TV / radio. The Bluetooth® receiver allows you to stream music directly from a Bluetooth-enabled device and, using Bluetooth® 4.0 technology, establishes a wireless connection between the device and any receiver with an AUX input without overloading the battery. The connection is easily made via a 3.5 mm jack plug.

The rocker switch is used to use the sound system via AUX or Bluetooth®.  
The sound system is controlled via AUX or Bluetooth® without switching on the radio.

**Note:** The external Bluetooth module offers the possibility to use the sound system without turning on the radio. When using 2x aux sources, the Y-adapter is required.

**Y-Adapter: 68496**



**Rocker switch: 69499**



**Bluetooth module: 68497**



## Noise filter

### Removes and prevents noise from TV or radio

The noise filter with 3.5 mm jack connector filters out noise (humming, crackling, whistling), which can be caused by electrical equipment of the vehicle. The filter is "plug & play" between the audio source (TV or radio) and the amplifier. The noise filter prevents most of the noise that occurs in the vehicle.

- eliminates noise, ground hum, grounding problems
- Frequency: 2 - 20.000 Hz
- connection through 3,5 mm jack
- no power supply necessary

**Recommendation:** The highest effectiveness is achieved when the interference suppression filter is installed as close as possible to the power amplifier.

**noise filter: 68499**



# SUBWOOFER

## Subwoofer - individual for motorhome and caravan

### Perfect sound dynamics - compact design - space-saving integration

The task of a subwoofer is to support the low frequency range. The development of our subwoofer solutions for motorhomes and caravans is not about sound pressure and decibels, but rather about achieving clear, spirited sound dynamics and perfection of the room sound. Enjoy music in a lively and "perceptible" way - without annoying vibration noise and booming bass.

**JEHNERT bass reflex subwoofers** in various sizes were developed especially for recreational vehicles with limited space. Despite the small they provide maximum sound quality. All subwoofers have a 4.8 m "plug & play" connection cable and are powered by the digital 5-channel amplifier to save power.

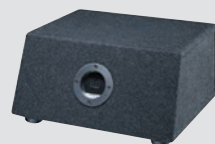
These are passive subwoofers that require an amplifier for connection.



unique 200 mm  
"Quadcoil" voice coil

### Bass reflex subwoofer with 200 mm / 8" woofer with quadcoil voice coil

Power duration/music: 1x 200 / 400 Watt  
Max. linear diaphragm stroke: + / - 6,5mm  
Impedance: 4x 3 Ohm  
Efficiency 1W / 1m 87 dB



**17008E**  
Dim.: 18.9 x 34 x 31 cm  
(1x 200mm woofer)



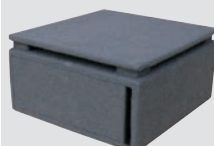
**17000**  
Dim.: 35 x 35 x 15.3 cm  
(1x 200mm woofer)



**17005**  
Dim.: 31 x 23.5 x 19.3 cm  
(1x 200mm woofer)  
Ideal fit for Hymer-Sprinter in the seat console



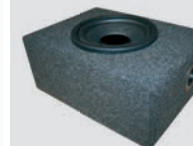
**17009**  
Ideal fit for Carthago motorhomes  
(1x 200mm woofer)



**17011**  
Dim.: 33.6 x 31.7 x 16.6 cm  
(1x 200mm woofer)  
Ideal fit for Sprinter in the passenger seat console



**17011-OB**  
Dim.: 33.6x31.7x14  
(1x 200mm woofer)



**17014**  
Dim.: 38 x 28 x 16 cm  
(1x 200mm woofer)  
Ideal fit for Fiat Ducato in the passenger seat console



**17015**  
Dim.: 41.5 x 15.5 x 44.6 cm  
(1x 200mm woofer)  
Ideal fit for Wheel case



**17022**  
Dim.: 34.3 x 30.5 x 16.5 cm  
(1x 200mm woofer)  
Ideal fit for T5/T6 under passenger seat



**17025**  
Dim.: 27 x 24.5 x 15.6 cm  
(1x 200mm woofer)



165mm dual voice coil

## Bass reflex subwoofer with 2x 165 mm / 6.5" woofer with dual voice coil

Power duration/music: 1x 200 / 400 Watt  
 Max. linear diaphragm stroke: +/- 5,0mm  
 Impedance: 4x 2 Ohm  
 Efficiency 1W / 1m 90 dB



**17007E**  
 Dim.: 31.3 x 30.5 x 28 cm  
 (2x 165mm woofer)



**17010**  
 Dim.: 36.5 x 31 x 12.8 cm  
 (2x 165mm woofer)

## Vehicle specific subwoofer

The technical information on the vehicle-specific subwoofers can be found on the respective product pages of the sound systems.



**65520-S**  
 Fiat Ducato III and series 8  
 below the cup holder  
 (1x 165mm woofer)  
 more info see p. 32



**69711**  
 Mercedes Marco Polo Horizon /  
 Activity / V-Class  
 In the side panel  
 (1x 200 mm woofer)  
 more info see p. 42



**65770**  
 Mercedes Sprinter  
 from YOM 2018  
 In the vehicle door  
 (1x 200 mm woofer)  
 more info see p. 39



**17024**  
 Crosscamp  
 underneath the seat  
 (1x 200mm woofer)  
 more info see p. 61



**65510**  
 Fiat Ducato III  
 In the vehicle door  
 (2x 130 mm woofer)  
 more info see p. 32



**65510-Q-S**  
 Fiat Ducato III - High Power  
 In the vehicle door  
 (1x 200 mm woofer)  
 more info see p. 32



**65530-Q-S**  
 Fiat Ducato Series 8  
 In the vehicle door  
 (1x 200 mm woofer)  
 more info see p. 32



**17029**  
 Ford Transit Custom  
 (as of. 2018)  
 In the vehicle door  
 (1x 165 mm woofer)  
 more info see p. 51





# SUBWOOFER – CAMPTEC-STYLE

## Refined design - powerful sound dynamics - Easy-Install - no loss of storage space

The subwoofers of the CampTec Style series convince especially by the design as well as easy installation. The bass reflex subwoofers incl. 1x 165mm woofer with dual voice coil are passive subwoofers that require an amplifier for connection (subwoofer connection cable included).

The "Magnetic" models are attached to the seat console in a space-saving manner by means of a magnet attachment (no screwing or drilling required). Thanks to the ingenious mounting location, there is no loss of storage space and the subwoofer can be retrofitted at any time. Another highlight of the CampTec series is the "MiKo" subwoofer, which is mounted under the cup holder in the center console of the Fiat Ducato.

(Attention: only suitable for models incl. cup holder (not suitable for models incl. map compartment in the center console).

Specific subwoofers for the vehicle doors in the Fiat Ducato as well as Mercedes Sprinter complete the concept and offer the optimal alternative.



165mm dual voice coil

## Bass reflex subwoofer with 1x 165 mm / 6.5" woofer with dual voice coil

Power duration/music: 1x 100 / 200 Watt  
Max. linear diaphragm stroke: + / - 5,0 mm  
Impedance: 4x 2 Ohm  
Efficiency 1W / 1m 90 dB



**17022-165**  
Dim.: 27 x 24,5 x 15,6 cm  
(1x165mm woofer)



**17022-165**  
Dim.: 34,3 x 30,5 x 16,5 cm  
(1x165mm woofer)  
Ideal fit for T5/T6  
under passenger seat



**Bass Reflex Subwoofer »MiKo« 65520-S**  
(1x165mm woofer)  
For Fiat Ducato III (Type 250) and Series 8  
below the cup holder of the center console



**»Magnetic« 17027-S / -M /-L**  
(1x165mm woofer)  
Dimensions: S - 42 x 19 x 13 cm  
M - 44 x 19 x 19,5cm  
L - 44 x 28 x 20cm  
Ideal for mounting behind the seat console



**»Underseat« 17028**  
(1x165mm woofer)  
Dimensions: 31 x 23,5 x 19,3 cm  
Ideal fit for Sprinter (W907/W910)  
in the seat console of the passenger seat



**Tür-Bass Reflex Subwoofer 60383-S**  
(1x165mm woofer)  
Vehicle specific door subwoofer for  
Fiat Ducato III (Type 250)

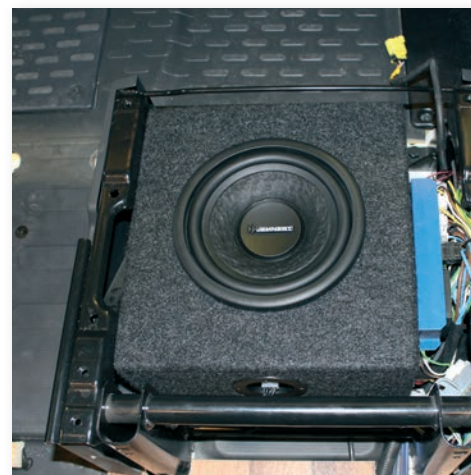
# SUBWOOFER EINBAUBILDER



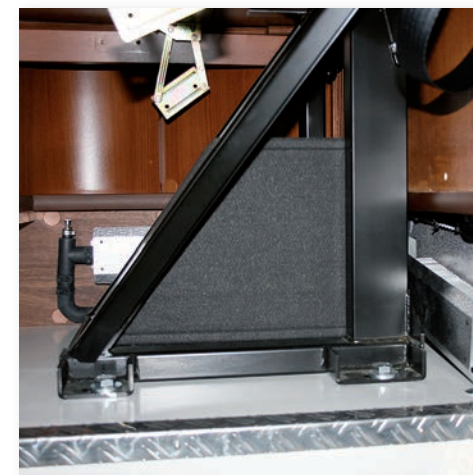
»17027-M« Subwoofer Magnetic behind the passenger seat



»65520-S« Subwoofer MiKo in the center console under the cup holder in Fiat Ducato



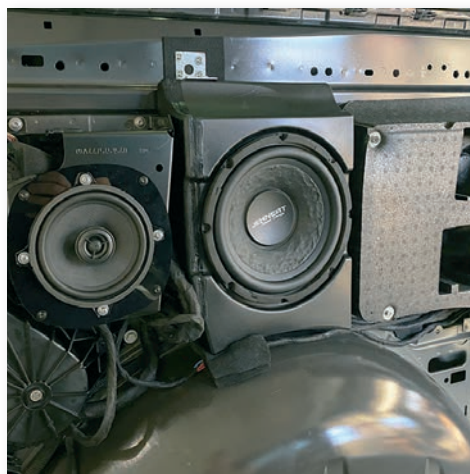
»17014« Subwoofer under the seat in Fiat Ducato (seat console under passenger seat)



»17009« Subwoofer for Carthago motorhomes (installation on the raised floor)



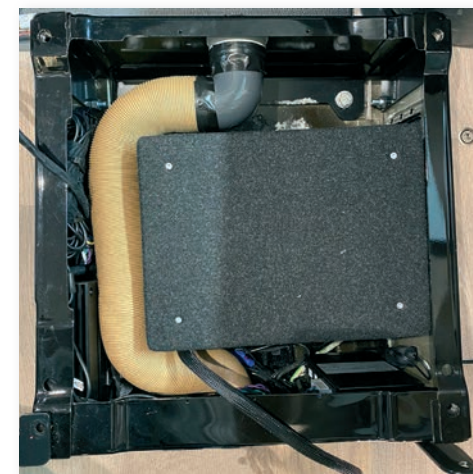
»17005« Subwoofer installed to save space (in the luggage compartment / raised floor)



»69711« Marco Polo Horizon subwoofer installed in the side panel



»17022« Subwoofer installed under the passenger seat in T5 / T6



»17005« Subwoofer under the passenger seat in Mercedes Sprinter (Hymer model)



# BLUETOOTH SPEAKER

## Bluetooth speaker for indoor and outdoor

For the practical expansion of the Jehnert sound system, the Bluetooth speakers offer the optimal complement.

For even more sound, the Bluetooth speakers have the Stereo Link function and can be connected to a stereo pair with an even larger sound stage.

### Bluetooth Speaker D Mate

#### Sound

- 360° detailed and crystal clear sound reproduction
- 25W RMS with integrated Class D amplifier
- higher transfer rates and more economical thanks to BT v4.2
- two customizable sound modes (bass boost)
- aptX codec for CD-quality transmissions

#### Play Child

- Up to 16h playing time thanks to powerful 6700mAh battery
- Charging smartphones thanks to powerbank function
- Dust and waterproof according to IPX6 certification
- Durable nylon case
- Pair two D Mate's for stereo use
- link two D Mate for stereo use
- extra power for larger rooms
- for use in living room or bedroom

#### Technical data

Driver	2 x 2.5", 2x passive radiators
Output power	25W RMS
Battery life	6700mAh / up to 16h
weight	825g
Dimensions (H x W x D)	220 x 85 x 85 mm
Connectivity	Bluetooth 4.2 + aptX
Connections	USB-C 5V-IN, Aux-In, USB 5V OUT
Article no.	<b>80971</b>



#### Optional accessories:

Bluetooth stream out (transmitter) to play the music from the radio to the Bluetooth speakers in the outdoor area incl. jack/ RCA adapter

**Article no. 80973**





»That was the right decision!« – you will say when the JEHNERT sound system accompanies you on your next trip.

The **feel-good factor** is quite decisive. This is created when sound and design form a unity. Harmony in appearance and perfect integration let you enjoy sonic dreams while traveling.



## JEHNERT SOUNDSYSTEME

Imagine your motorhome or caravan in which you enjoy music in the highest sound quality.

JEHNERT sound systems guarantee a **brilliant sound** and give a **visually exclusive ambience**.

No matter which vehicle base, you always have the optimal sound equipment, thanks to an acoustically optimal listening position in the driver's cab. In an innovative design, two living room boxes for the living or sleeping area complement the cab system and create a harmoniously homely ambience in addition to perfect surround sound.

A power-saving 5-channel amplifier (selectable in two power levels) as well as a subwoofer in different subwoofer in various sizes, perfect the system as a sonic and visual highlight.

With an optional Bluetooth® interface, wireless music streaming from almost any mobile device is possible, offering great flexibility.

JEHNERT sound systems are matched to the respective vehicle and consist of various, high-quality components. The result: perfectly tuned sound in your vehicle.

**On the road traveling and not doing without anything...**

# WOHNRAUMBOXEN

## A Hifi multi-talent on the road!

### Brilliant sound, compact, small and perfectly integrated it should be?

With JEHNERT living room boxes, you can also enjoy your sonic dreams visually. The variably applicable multiboxes offer versatile assembly and installation possibilities due to their unique design. Installation is quick and easy with an included screw set and anti-vibration tape. The front housing can be combined for any living room design and is available in many color variants.



Multibox 6600, superstructure

### Color selection according to your wishes:

For almost all living space boxes, 8 color variants are available for the cover fronts in the standard scope of delivery. Special colors on request.

We will be happy to provide you with our imitation leather color samples on request.



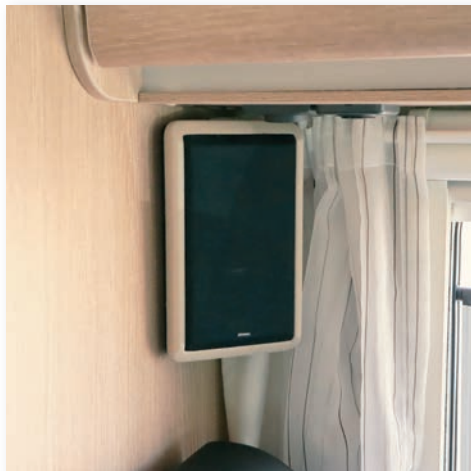
### Technical data\*\*:

Living room boxes:	Multibox 5500	Multibox 5500-4K	Multibox 6600	Multibox 6600-4K	Multibox 7000	Multibox 7000-4K	Multibox 6100	PleX-Plade 6700
Speaker system:	1x XE26 tweeter 1x XE80 midrange driver	1x XE26 tweeter 1x XE80 midrange driver	1x XE26 tweeter 1x XE100 midrange driver	1x XE26 tweeter 1x XE100 midrange driver	1x XE26 tweeter 1x XE80 midrange driver	1x XE26 tweeter 1x XE80 midrange driver	1x XE26 tweeter 1x XE100 midrange driver	1x XE26 tweeter 1x XE100 midrange driver
Load capacity duration/ music:	50 / 100 Watt*	50 / 100 Watt*	50 / 100 Watt*	50 / 100 Watt*	50 / 100 Watt*	50 / 100 Watt*	50 / 100 Watt*	50 / 100 Watt*
Transmission range:	150 - 22.000 Hz	150 - 22.000 Hz	80 - 22.000 Hz	80 - 22.000 Hz	100 - 22.000 Hz	100 - 22.000 Hz	80 - 22.000 Hz	80 - 22.000 Hz
Impedance:	4 Ohm	4 Ohm	4 Ohm	4 Ohm	4 Ohm	4 Ohm	4 Ohm	4 Ohm
Dimensions (L x W x D):	18 x 10 x 8 cm	18,1 x 10,3 x 4,1 cm	22 x 13 x 9,5 cm	21,7 x 12,6 x 4,1 cm	24 x 11,5 x 7,7 cm	24 x 11,6 x 4 cm	29,5 x 12,5 x 9,5 cm	19 x 12 x 6 cm
Weight:	720 g	720 g	1.200g	1.200g	1.000 g	1.000 g	1350 g	1020 g
Color leatherette Front cover:	schwarz, weiß, orion- grau, heliosbeige, beige natur, cremeweiß	schwarz, weiß, orion- grau, heliosbeige, beige natur, cremeweiß	nach Wahl	nach Wahl	schwarz, weiß, orion- grau, heliosbeige, beige natur, cremeweiß	schwarz, weiß, orion- grau, heliosbeige, beige natur, cremeweiß	nach Wahl	schwarz, weiß
Speaker cover:	Akustikstoff schwarz	Akustikstoff schwarz	Akustikstoff schwarz	Akustikstoff schwarz	Akustikstoff schwarz	Akustikstoff schwarz	Akustikstoff schwarz	Akustikstoff schwarz
Color back of housing:	schwarz, weiß	schwarz, weiß	schwarz, weiß	schwarz, weiß	schwarz, weiß, beige	schwarz, weiß, beige	schwarz, weiß	-

\* via crossover

\*\* Data per piece

# LIVING ROOM BOXES INSTALLATION PICTURES



*Living room box 5500 »nature beige«*



*Living room box 6600 »nature beige«*



*Living room box 5500 »oriongrey«*



*Plex-Plade 6700 in the living area*



*Multibox 6100 »cream white«*



*Multibox 7000 »oriongrey«*



*Multibox 7000 »cream white«*



*Multibox 7000 »pure white«*



# Multibox series

## Multibox 7000 and 7000-4K

In exclusive design, these speaker boxes were equipped with a 2-way system for maximum sonic performance. A 26 mm tweeter and 80 mm midrange reproduce a brilliant sound reproduction, which becomes a perfect sound experience with the support of a subwoofer. The Multibox 7000-4K offers the exact same sound character as the Multibox 7000. The optical highlight of the box is the reshaped acoustic fabric trim on the top and bottom.

- 2-part construction for flat mounting on cabinet or partition wall
- Angled resonance cabinet for corner mounting, on shelf or under wall unit (7000) or mounting on straight surfaces (7000-4K)
- Imitation leather front panel in black, white, orion gray, helios beige, beige natural or cream white



## Multibox 6600 and 6600-4K

The powerful Multibox 6600 offers excellent sound performance with a 26 mm soft dome neodymium tweeter and a 100 mm bass-midrange driver excellent sound performance. The high-quality 2-way speaker system lets you enjoy music enjoy music with clear, dynamic sound noticeably alive.

- 2-part construction for flat mounting on cabinet or partition wall
- Angled resonance cabinet for corner mounting, on shelf or under wall unit (6600) or mounting on straight surfaces (6600-4K)
- Color leatherette front panel of your choice (see page 26)



## Wohnraumbox 5500 and 5500-4K

The Multibox 5500 performs with its small dimensions of 18 x 10 x 8 cm excellent sound qualities. The integrated 2-way system with a 26 mm soft dome neodymium tweeter and 80 mm midrange driver achieves the perfect listening pleasure when complemented with an optional subwoofer.

- 2-piece construction for flat mounting on cabinet or partition wall
- Angled cabinet for corner mounting, on shelf or under wall unit (5500) or mounting on straight surfaces (5500-4K)
- Imitation leather front panel in black, white, orion gray, helios beige, beige nature or cream white

The Multibox 5500-4K has a rectangular housing in contrast to the Living Room Box 5500, However, it offers exactly the same sound character.





# Multibox series

## Multibox 6100

The living room box 6100 offers in the exclusive design, variable mounting options and a very special sound concept in one. Due to the two-part construction and a triangular housing rear wall, the positioning is possible, for example, on a cabinet, partition, shelf or as a corner box. The color of the front housing is available in many variants and can thus be adapted to any living room design. For the sonic brilliance provides an integrated 2-way speaker system in a very special design, each with 1x 100mm woofer and 1x 26mm soft dome neodymium tweeter.

- 2-part construction for flat mounting on cabinet or partition wall
- Angle resonance cabinet for corner mounting, on shelf or under wall unit
- Color leatherette front panel of your choice (see page 26)
- Acoustic fabric front panel black or white



## PleX-Plade

The PleX-Plade complements the existing living room box series with an absolute "eye catcher" and brilliant sound.

In a combination of acrylic glass and acoustic fabric, the PleX-Blade offers the space-saving alternative in a unique design to the living room boxes. The panels convince with their minimal installation height and thus allow the perfect integration of speakers in the living room, especially on wall cabinets. The integrated 2-way system with a 26mm soft dome neodymium tweeter and 100mm midrange driver achieves in addition with an optional subwoofer the perfect listening pleasure.

The noble front panels are covered with durable and lightfast acoustic fabric.

- 2-way system with brilliant sound
- 1x 26mm neodymium softdome tweeter "XE26"
- 1x 100mm midrange driver "XE100"
- incl. specially tuned crossovers
- despite small dimensions excellent sound qualities (mounting depth: 300 mm / mounting height: 3mm)



# »plug & play«-Installation

What does »plug & play« mean anyway?

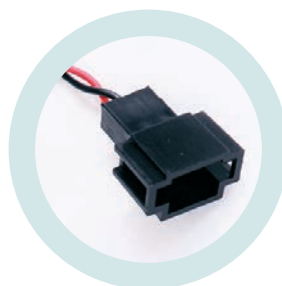
## »plug & play«-Anschluss erklärt

When installing the JEHNERT sound system, the »plug & play« connection offers the optimal solution: the individual products can be integrated quickly and easily in the respective vehicle.

The respective "plug & play" connection cables enable a direct connection between, for example, the subwoofer and the amplifier without major detours. Likewise, the installation of the crossovers including vehicle-specific plug connections eliminates the need for cable cutting and thus offers an uncomplicated installation without special tools and prior technical knowledge.

The plug & play adaptations allow an error-free installation, thanks to snap-fit connectors.

- enormous time saving
- easy installation
- no cable cutting necessary
- use of original plug connections



By connecting the »plug & play« cable, the subwoofer can be easily connected with the amplifier and then installed underneath the center console.



Woofer is installed on the car door with mounting ring



plug & play connection cables are joined together in no time during assembly



# Fiat Ducato III YOM 2006 (Typ 250) / Serie 8 YOM 2021

also suitable for Citroën Jumper / Peugeot Boxer



To the product:



## 3-way cab system

In acoustic fine-tuning, the vehicle-specific 3-way sound system provides a rich low-frequency foundation and achieves a powerful, lively sound image. High-quality 26mm soft-dome neodymium tweeters and 80mm high-end midrange drivers in the dashboard perfect the sound image with a very spatial and detailed stage image.

Optional for low bass enhancement: Subwoofer system for III (Type 250) (Art.-No. 65510)

Subwoofer system for Series 8 (Art.-No. 65530-Q-S)

### Speaker placement:

2x 165 mm JEHNERT Power Woofer "XM165"  
2x 80 mm midrange driver "XE80"  
2x 26 mm neodymium softdome tweeter "XE26"  
JEHNERT crossovers, vehicle specific calibrated

### Technical data:

Load capacity duration / music: 2x 80 / 160 Watt  
Transmission range: 49 - 22.000 Hz  
Impedance: 4 Ohm  
rec. Amplifier power: ab 2 x 50 - 100 Watt @ 4 Ohm



3-way front system



Front system on the dashboard



Mid-high module (without cover)



Mid-high module (with cover)



Mid-Treble Module Driver Side



Mid-Treble Module Driver Side



Woofer in the car door



# Vehicle specific subwoofer

## Ducato III, Serie 8 and MiKo Subwoofer



To the product:

### Cupholder "driver and passenger side" for III (type 250)

Exclusive cupholder for bottles up to 1.5 l - high-quality imitation leather cover with double decorative stitching - for mounting on the driver and passenger side (e.g. above the subwoofer system) - each also available separately - available in gray or black

**Order No. 61570** - Driver's side  
**65560** - Passenger side



Cupholder  
Driver's side



Cupholder  
Passenger side

### The specific "Ducato" III and series 8 door subwoofer

The bass reflex subwoofer, which is available in two power classes, is installed in the driver's door to save space and perfectly rounds off the sound image in the lower frequency range.

The completely enclosed subwoofer housing with side bass outlet replaces the driver's side lower map compartment and is mounted at its original mounting points.

This is available with imitation leather cover as well as double decorative stitching and in black or gray. For hifi purists, a high-performance version is available, which achieves the maximum sound performance with a 200 mm quadcoil woofer.

**Power »Standard«:** 1x 120 Watt Sinus / 200 Watt @ 2 Ohm **Order no. 65510** (only for type 250)  
**Power »High-Power«:** 1x 200 Watt Sinus / 400 Watt @ 2 Ohm **Order no.. 65510-Q-S (Typ 250) / 65530-Q-S (Serie 8)**



Tür-Subwoofer Serie 8 eingebaut



Subwoofer Serie 7 Rückseite »High-Power«

### The specific center console subwoofer »MiKo«

The bass reflex subwoofer is mounted under the cup holder in the center console of the Fiat Ducato (Attention: only suitable for models incl. cup holder (not suitable for models incl. map compartment in the center console).

• Subwoofer MiKo incl. leather cover and decorative stitching and incl. connection cable.  
These are passive subwoofers that require an amplifier for connection.

**Power »Standard«:** 1x 100 Watt Sinus / 200 Watt @ 2 Ohm **Order no. 65520-S**



Subwoofer MiKo »65520-S«





# Fiat Ducato III YOM 2006 (Typ 250) / Serie 8 YOM 2021

also suitable for Citroën Jumper / Peugeot Boxer

## Soundpackage 1 »Cab«

**Cab:**

- 3-way sound system (Art.-No. 65580)
- Subwoofer system of your choice (see p. 32)
- digital 5-channel amplifier selectable in 2 power classes (Art.-Nr. 11062 oder 11086 - S. 16)
- incl. pre-installed vehicle specific sound setup
- »plug & play« Connection cable for subwoofer and amplifier



5 channel DSP amplifier



Bass Reflex Ducato Door Subwoofer (Driver Side)

oder



3-way front system



Bassreflex Subwoofer MiKo »65520-S«

## Soundpackage 2 »Cab and living area«

**Cab:**

- Scope of delivery sound package 1

**Living area:**

- 2 x Multibox 6600, 6600-4K, 7000 or 7000-4K, color of choice (p. 26-29)



2x Multibox of choice



		Ducato III	Ducato Serie 8
3-way sound system »Cab«		65580	
Soundpackage 1 incl. 2x 130mm door subwoofer	• incl. digital 5-channel amplifier	69071-62	–
	• incl. digital <b>high power amplifier</b>	69071-86	–
Soundpackage 1 incl. 1x 200mm oor subwoofer	• incl. digital 5-channel amplifier	69071-62-Q	69081-62-Q
	• incl. digital <b>high power amplifier</b>	69071-86-Q	69081-86-Q
Soundpackage »MiKo« incl. 1x 165mm Woofer		69081-62-MiKo 69081-86-MiKo	
Soundpackage 2 incl. 2x 130mm oor subwoofer	• incl. digital 5-channel amplifier and 2x Multibox	69072-62	–
	• incl. digital <b>high power amplifier</b>	69072-86	–
Soundpackage 2 incl. 1x 200mm oor subwoofer	• incl. digital 5-channel amplifier and 2x Multibox	69072-62-Q	69082-62-Q
	• incl. digital <b>high power amplifier</b> and 2x Multibox	69072-86-Q	69082-86-Q
Soundpackage 2 »MiKo« incl. 1x 165mm Woofer		69082-62-MiKo 69082-86-MiKo	

Optional accessories		Ducato III	Ducato Serie 8
Radio adapter cable for original FIAT radio		11016	11020
Insulation	Serie 7 2x Alubutyl, thickness 3mm, (dimension: 50cm x 60cm) 1x Felt, Thickness 2mm, (Dimension: 90cm x 60cm)	27950	–
	Serie 8 2x insulation fleece, thickness 10mm, (dimension: 100cm x 60cm) 2x Alubutyl, thickness 3mm, (dimension: 50cm x 60cm)	–	27970

# CampTec Style for Ducato III and Serie 8

To the product:



## 2-way front system »plug & play« for Ducato III and Series 8

The Fiat Ducato plug & play front system is installed with a few simple steps and allows the optimal basis to expand the speaker system and in the Fiat Ducato - Citroen Jumper - Peugeot Boxer to achieve an increase in sound. The scope of supply contains suitably cut Alubutyl insulation mats and the completely pre-assembled 2-way speaker system for the Fiat Ducato including plug & play connectors.

The system can of course be supplemented by an amplifier and subwoofer and serves through the individual expansion stages every sound requirement.

The installation time is about 10-15 minutes for the 2-way front system.

The system is suitable for:

FIAT Ducato from year 06/2006 (series III - type 250) also suitable for Citroen Jumper / Peugeot Boxer  
FIAT Ducato from Bj. 2021 (Series 8)

## Basic Installer Package

- 2x Tweeter "XA19" pre-assembled
- 2x 165 mm JEHNERT Power Woofer "XA165" pre-assembled
- 4x Alubutyl plates

Order no. 68501



## Extension package 1

- Subwoofer Magnetic selectable in 3 sizes (S/M/L)
- 1x 3,3m subwoofer cable
- 4-channel amplifier AMP V40 CampTec

Order no. 68503



## Extension package 2

- Subwoofer MiKo
- 1x 1m subwoofer cable
- 4-channel amplifier AMP V40 CampTec

Order no. 68502



## Extension package 3

- 1x door bass reflex subwoofer with 165mm woofer
- 1x 3,3m subwoofer cable
- 4-channel amplifier AMP V40 CampTec

Order no. 68504



Optional accessories:

Mounting bracket	68510
Connection cable ISO 1.0m for AmpV40 CampTec incl. subwoofer interface (Fiat Ducato III or Series 8 with retrofit radio)	11181
Connection cable ISO 1.0m for AmpV40 CampTec incl. subwoofer interface incl. rear connection (Fiat Ducato III or Series 8 with retrofit radio)	11184
Radio adapter cable »Fiat Ducato orig. Radio YOM 2015«	11016
Connection cable Fiat Ducato Series 8 incl. original Fiat radio incl. subwoofer interface incl. connection rear speakers	11180-Rear-69583



# CampTec Style installation pictures Ducato



*Woofer in the car door*



*Tweeter in the A-pillar*



*Amplifier with mounting bracket at installation site*



*Door subwoofer Ducato III in the vehicle door*



*Magnetic subwoofer attached to the back  
attached to the back of the driver and passenger seat.*



*MiKo subwoofer in the center console below the cup holder*

»The little things lead to perfection, but perfection is not a trifle.«

(Henry Royce)

**JEHNERT sound systems** are more than just a little something - they are perfection in sound and design.



## JEHNERT SOUNDSYSTEME

- MORE THAN JUST A SOUND SYSTEM -

**Your vehicle is not yet included? No problem!**

**JEHNERT** offers a wide variety of sound systems. If you do not find a sound system for your vehicle in our catalog, please do not hesitate to contact us.

**Your sound system made to measure:** Due to many different layouts, we will be happy to your individual sound system free of charge with sample pictures and assist you with the decision.



# Mercedes Sprinter

NCV 3 from 2006 - 2018 (Type W906)



To the product:

## 3-way cab system

The loudspeaker mounts developed for the Sprinter dashboard integrate two acoustically optimal listening position two 80 mm midrange drivers. Two 26 mm softdome neodymium tweeters in the A-pillars complement the 3-way system and achieve a wide, spatial soundstage. For a greatly improved fundamental sound reproduction and higher overall sound pressure, in the factory installation location of the vehicle doors, a 165 mm JEHNERT Power Woofer (incl. mounting adapter and grille). The Sprinter sound system is specially vehicle acoustically calibrated. This guarantees an optimal sound image and a detailed music reproduction.

### Speaker placement:

2x 165 mm JEHNERT Power Woofer "XM165"  
2x 80 mm midrange driver "XE80"  
2x 26 mm neodymium softdome tweeter "XE26"  
JEHNERT crossovers, vehicle specific calibrated

### Technical data:

Power handling continuous / music: 2x 80 / 160 watts  
Frequency range: 49 - 22.000 Hz  
impedance: 4 Ohm  
rec. Amplifier power: from 2 x 50 - 100 watts @ 4 Ohm



Mid-tone module dashboard - cover imitation leather, structure and color matched to the dashboard



Woofer in the car door

## Soundpackage1 »Cab«

### Cab:

- 3-way Soundsystem (Art.-Nr. 65700)
- Subwoofer of choice (S. 20-21)
- digitaler 5-Kanal Verstärker wählbar in 2 Leistungsklassen (Art.-Nr. 11062 oder 11086 - S. 16)
- inkl. vorinstalliertem fahrzeugspezifischen Klang-Setup
- »plug & play« Anschlusskabel für Subwoofer und Verstärker



3-way cab system



5 channel DSP



Subwoofer of choice

## Soundpackage 2 »Cab and living area«

### Cab:

- Scope of delivery Soundpackage 1

### Living area:

- 2 x Multibox 6600, 6600-4K, 7000 or 7000-4K, color of choice (p. 26-29)



2x Multibox of choice

3-way Cab system	65700
Soundpackage 1 with digital 5-channel amplifier »11062«	69701-62
Soundpackage 1 with digital high-performance amplifier »11086«	69701-82
Soundpackage 2 with digital 5-channel amplifier »11062«	69702-62
Soundpackage 2 with digital high-performance amplifier »11086«	69702-82
Optional accessories (for further accessories, see p. 18-19):	
Amplifier control for subwoofer control (p. 17)	68495
Radio adapter cable for orig. Mercedes radio	11094

# Mercedes Sprinter Overview

from YOM 2018 W907/W910

## Overview of the individual systems

For all equipment variants of the Mercedes Sprinter W907/W910, the JEHNERT-specific cab systems sound enhancement that inspires. Due to the various optional extras can be chosen between mid-high modules on the A-pillar or dashboard.

When choosing the perfect sound system, you need to consider the following aspects:

Dashboard without / incl. cover flaps?

- Dashboard incl. cup holder = without cover flaps see order no. 65740
- Dashboard incl. cover flaps = without blackout blind see order no. 65780
- = with blackout blind see order no. 65730

If sound package is selected: E3D DSP interface available? ( only relevant for soundpackage 1 or 2)

- yes - ISO connection is on passenger side in footwell - no additional cable necessary
- no - plug & play adapter 11080 recommended

TV connection desired?

- AUX input must be ordered separately. (Order no. 11086-AUX jack).
- For additional Bluetooth use, without switching on the MBUX, an external Bluetooth module is recommended. ( Order no. 68497+ 68496)

Optional accessories (available for respective sound packages):

	Order No.
Insulation Mercedes Sprinter W906 / W907	27920
Amplifier control for subwoofer control (p. 17)	68495
AUX input or Bluetooth® module integrated in amplifier (p.19)	11086-AUX-Klinke / 11086-BT
plug & play connection cable for factory Mercedes radio /MBUX	11080
(is needed, if no DSP interface Mercedes Code E3D is installed)	
Bluetooth module external for integration BT & AUX TV	68497
Y-adapter for connecting Bluetooth module externally	68496

**Hymer specific accessories:**

Ventilation set for subwoofer mounting (17005 under passenger seat)	68492
Power connection cable incl. factory DSP box for bridging power supply TV	68491

### Sprinter vehicles with cup holders -without cover flaps



#### Mid-high module for the dashboard

Independent of the A-pillar trim, the module is suitable for the storage compartment integrated in the dashboard. Only suitable for models with cup holder left and right on the dashboard.

Order No. 65740

### Sprinter vehicles with cover flaps without blackout blinds



#### Mid-high module in the A-pillar trim

For vehicles including cover flaps on the dashboard, specific mid-high modules on the A-pillars achieve a perfect sound stage.

Order No. 65780

### Sprinter vehicles with cover flaps incl. Remis - blackout blinds



#### Mid-high module in the A-pillar trim

For vehicles incl. cover flaps on the dashboard and blackout blind, specific mid-high modules on the A-pillars achieve a perfect sound stage.

Order No. 65730

# Mercedes Sprinter

VS30 as of 2018 (type W907 / W910) panel van partially inte-



To the product:



## 3-way Cab system

In precisely coordinated listening positions, a 55 mm / 80 mm midrange driver and 26 mm tweeter each in vehicle-specific midrange-tweeter modules on the A-pillars and on the dashboard provide a perfect sound stage. A 165 mm JEHNERT Power Woofer in the factory installation location of each vehicle door ensures a powerful low-frequency range. The woofers are installed directly in the factory installation openings with a precisely fitting mounting adapter - mounting adapter included.

Loudspeaker equipment with Remis (Art.No. 65730):  
2x 165 mm JEHNERT Power Woofer »XM165«  
2x 55 mm midrange driver »XE55«  
2x 26 mm neodymium softdome tweeter »XE26«  
JEHNERT crossovers, vehicle specific

### Technical data:

Power handling continuous / music: 2x 80 / 160 watts

Frequency range: 49 - 22.000 Hz

impedance: 4 Ohm

rec. Amplifier power: ab 2 x 50 - 100 Watt @ 4 Ohm

Loudspeaker equipment without Remis (Art. No. 65740/65780):  
2x 165 mm JEHNERT Power Woofer »XM165«  
2x 80 mm midrange driver »XE80«  
2x 26 mm neodymium softdome tweeter »XE26«  
JEHNERT crossovers, vehicle specific



Mid-high module on the dashboard



Woofer incl. mounting ring



Mid-high module A-pillar without Remis



Mid-high module A-pillar with Remis

## The specific »Sprinter« door subwoofer

A 200mm quadcoil woofer with quadruple bass voice coil; perfectly rounds out the sound image in the lower frequency response. The fully enclosed GRP subwoofer enclosure with side bass exit replaces the driver's side lower map compartment and mounts to its original mounting points. Leatherette cover: black

**High-Power: 1x 200m JEHNERT quadcoil woofer with quadruple bass voice coil; order no. 65770-200**

**Power: 4x 50 Watt Sinus @ 3 Ohm**



Subwoofer mounted



Subwoofer incl. cover and acoustic fabric cover front and rear side

## Harmonious integration of the center speaker

The factory extremely dominant center speaker is throttled by means of the Plug & Play crossover. This contributes to the security system (use as an emergency speaker) and should therefore not be disconnected. In order to use the factory speaker system in a harmoniously tuned volume, the center speaker has to be curbed in terms of volume.

The plug & play crossover throttles the factory center speaker so that it integrates harmoniously with the factory speaker system.



Center-Weiche 36681



# Mercedes Sprinter

from YOM 2018 (Typ W907 / W910)

To the product:



## Soundpackage 1 »Cab« for vehicles without cover flaps

### Cab:

- 3-way sound system (art. no. 65740)
- subwoofer of your choice (p. 20-21)
- digital 5-channel amplifier selectable in 2 power classes (art. no. 11062 or 11086 - p. 16)
- incl. pre-installed vehicle specific sound setup
- »plug & play« connection cable for subwoofer and amplifier



3-way front system  
on the dashboard



5 channel DSP amplifier



Subwoofer of choice

## Soundpackage 1 »Cab« for vehicles with cover flaps

### Cab:

- 3-way sound system (art. no. 65780/65730)
- subwoofer of your choice (p. 20-21)
- digital 5-channel amplifier selectable in 2 power classes (art. no. 11062 or 11086 - p. 16)
- incl. pre-installed vehicle specific sound setup
- »plug & play« connection cable for subwoofer and amplifier



3-way front system with Remis



3-way front system without remis



5 channel DSP amplifier



Subwoofer of choice

## Soundpackage 2 »Cab and Living area«

### Cab:

- Scope of delivery Soundpackage 1

### Living area:

- 2 x Multibox 6600, 6600-4K, 7000 or 7000-4K, color of choice (p. 26-29)



2x Multibox of choice

## Soundpackage 2 »Cab and Living area«

### Cab:

- Scope of delivery Soundpackage 1

### Living area:

- 2 x Multibox 6600, 6600-4K, 7000 or 7000-4K, color of your choice (p. 26-29)



2x Multibox of choice

	Vehicles without cover flaps
3-way Cab system	65740
Soundpackage 1 with digital 5-channel amplifier »11062«	69741-62
Soundpackage 1 with digital high-power amplifier »11086«	69741-82
Soundpackage 2 with digital 5-channel amplifier »11062«	69742-62
Soundpackage 2 with digital high-power amplifier »11086«	69742-82

	Vehicles without Remis roller blind	Vehicles incl. Remis roller blind
3-way Cab system	65780	65730
Soundpackage 1 with digital 5-channel amplifier »11062«	69781-62	69731-62
Soundpackage 1 with digital high-power amplifier »11086«	69781-82	69731-82
Soundpackage 2 with digital 5-channel amplifier »11062«	69782-62	69732-62
Soundpackage 2 with digital high-power amplifier »11086«	69782-82	69732-82

Optional accessories see p. 26-29

# CampTec Style for Mercedes W907/910

To the product:



## 2-way Compo System Basic Installer Package

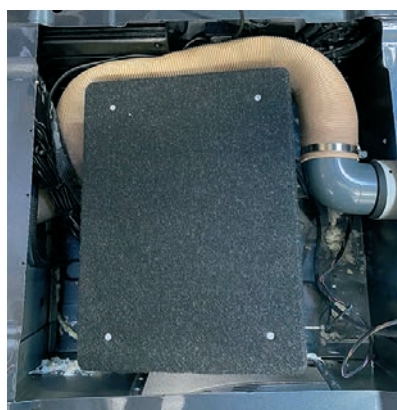
The Mercedes Sprinter plug & play front system is installed with a few simple steps and provides the optimal basis to expand the speaker system and achieve a sound enhancement in the Mercedes Sprinter.

The system can of course be supplemented by an amplifier and subwoofer and serves every sound requirement through the individual expansion stages.

### Facts about the 2-way front system:

- Simple and quick installation in factory mounting locations.
- Original optics remain intact! No drilling & cutting
- »plug&play« - adaptation - already pre-assembled
- 19mm tweeter incl. »plug&play« adapter
- 165mm low-mid driver incl. »plug&play adapter and optimized mounting ring
- Ready to install incl. mounting accessories and »plug&play«

Installation time is approximately 10-15 minutes for the 2-way front system.



Subwoofer Underseat with ventilation set



Magnetic subwoofer attached to the back attached to the back of the driver and passenger seat.

## Basic Installer Paket

- 2x tweeter XA 19MB
- 1x center crossover
- 2x woofer XA 165 incl. "plug&play" adapter and optimized mounting ring

Order No. 68601



2-way Front system

## CampTec Paket 1

- Subwoofer Magnetic in 3 sizes selectable (S/M/L)
- 1x 3,3m subwoofer cable
- 4-channel amplifier AMP V40 CampTec

Order No. 68503-MB



## CampTec Paket 2

- Subwoofer (Underseat)
- 1x 3,3m subwoofer cable
- 4-channel amplifier AMP V40 CampTec

Order No. 68604



Insulation Mercedes Sprinter W906 / W907	27920
Connection cable ISO 1.0m for AmpV40 CampTec incl. subwoofer interface	11181
Connection cable ISO 1.0m for AmpV40 CampTec incl. subwoofer interface incl. rear connection	11184
Radio adapter cable for original Mercedes radio W907 / W910 for models without E3D - DSP - interface	11080

# Mercedes Marco Polo

from year 2014 (type 447) also suitable for HORIZON / Activity / V-Class



To the product:

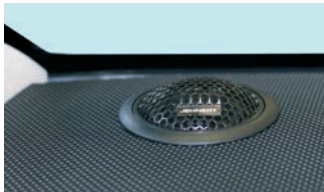


## Sound performance for the Mercedes Marco Polo

The Mercedes Marco Polo sound system is available with up to nine premium speakers, bass reflex subwoofer as well as a digital 5-channel amplifier. The sound system is specially tuned for the acoustics of the vehicle. The specific subwoofer is specially designed for the rear side panel and is thus integrated invisibly and in a space-saving manner. Another special feature includes two vehicle-specific sound setups. This allows the impressive sound can be switched individually with a switch for driving or stationary mode. The sound system can be controlled via smartphone using Bluetooth®. The head unit does not need to be switched on for smartphone control.

### Technical data:

Power handling continuous / music: 2x 80 / 160 watts  
Frequency range: 49 - 22.000 Hz  
impedance: 4 Ohm  
rec. Amplifier power: from 2 x 50 - 100 Watt @ 4 Ohm



*Tweeter mounted on the dashboard*

## The specific »Marco Polo« subwoofer

Despite the small cabinet volume, the subwoofer performs maximum sound quality. The integrated 200 mm subwoofer works with a 4-way voice coil drive highly efficient. The installation is space-saving next to the seating group in the cavity of the rear side panel (passenger side). The housing design was made to fit precisely, so that the existing fixtures (control units, trailer hitch, jack and on-board tools) remain unrestricted.



*Vehicle specific  
Bass reflex subwoofer*

Power: 1x 200 Watt Sinus / 400 Watt @ 2 Ohm

**Order No. 69711 (Marco Polo / Horizon / V-Class/ Activity)**

Illustration of subwoofer installation see p. 23

## Soundpackage »High-Power 1«

- 2x »XE26« Neodymium Softdome Tweeter Front & Rear
- 2x »XM165« Power Woofer Front incl. mounting ring (door)
- incl. vehicle specific crossover
- 200 mm Marco Polo specific quadcoil subwoofer
- digital 5-channel high-performance amplifier (Art.-No. 11086 p.16)
- incl. pre-installed Marco Polo sound setup
- »plug & play« connection cable for subwoofer and amplifier



*Front system*



*5 channel DSP amplifier*



*Vehicle specific  
Bass reflex subwoofer*



*200 mm quadcoil subwoofer*

## Soundpackage »High-Power 2«

- Scope of delivery Soundpackage »High-Power 1«
- 2x Coax speaker rear incl. mounting ring



*Rear system*

	Marco Polo	Horizon / Activity / V-Class
Soundpackage »High-Power 1« Front	69758-82	
Soundpackage Marco Polo »High-Power 2« Front & Rear	69751-82	69759-82

### Optionales Zubehör:

Amplifier control for subwoofer control (p.17)	68495
AUX input or Bluetooth® module integrated in amplifier (p.19)	11062-AUX-jack / 11086-BT
Extension cable for sliding door control module (required up to model year 18)	69497
plug & play connection cable -Standard Command ( up to YOM 19 without ACU)	11094
plug & play connection cable MBUX ( from year 19 incl. ACU)	11080



# Mercedes Sprinter – Integrated models

from year 2018 (Type W907 / W910)

To the product:



## 3-way Cab system

### including mid-high module on the dashboard

For Integrated models, the mid-tweeter module is available for the dashboard. Here, the tweeter in the mid-tweeter panel has been angled. This special arrangement acoustically forms a so-called stereo triangle and ensures optimum radiation. Only suitable for models with cupholders on the left and right of the dashboard. The factory dominant center speaker is throttled by means of the plug & play crossover included in the scope of delivery and blends harmoniously into the sound system. A 130 mm JEHNERT Power Woofer in the factory installation location of the side trim provides a powerful low-frequency range.

#### Loudspeaker equipment:

2x 130 mm JEHNERT Power Woofer »XE130-G«  
2x 80 mm midrange driver »XE80«  
2x 26 mm neodymium soft dome tweeter »XE26«  
JEHNERT crossovers, vehicle specific calibrated

#### Technical data:

Load capacity duration / music: 2x 80 / 160 Watt  
Transmission range: 49 - 22.000 Hz  
Impedance: 4 Ohm  
rec. Amplifier power: from 2 x 50 - 100 Watt @ 4 Ohm



Front system on the dashboard Mercedes Sprinter



130mm JEHNERT Power Woofer

#### Important notice:

Connection sound system via factory DSP interface (Mercedes code E3D),  
alternatively via the head unit with the help of connection cable (part no. 11080)

Carthago models see page 54-55

## Soundpackage 1 »Cab«

#### Cab:

- 3-way Soundsystem (Art.-Nr. 65130)
- Subwoofer of choice (S. 20-21)
- digitaler 5-Kanal Verstärker wählbar in 2 Leistungsklassen  
(Art.-Nr. 11062 oder 11086 - S. 16)
- inkl. vorinstalliertem fahrzeugspezifischen Klang-Setup
- »plug & play« Anschlusskabel für Subwoofer und Verstärker



3-way front system incl. 130 mm woofer for car doors



5 channel DSP amplifier



Subwoofer of choice

## Soundpackage 2 »Cab und Living area«

#### Cab:

- Scope of delivery Soundpackage 1

#### Living area:

- 2 x Multibox 6600, 6600-4K, 7000 or 7000-4K, color of choice (p. 26-29)



2x Multibox of choice

3-way Cab System	65130
Soundpackage 1 with digital 5-channel amplifier »11062«	68131-62
Soundpackage 1 with digital high-performance amplifier »11086«	68131-86
Soundpackage 2 with digital 5-channel amplifier »11062«	68132-62
Soundpackage 2 with digital high-performance amplifier »11086«	68132-86

Optional accessories see p. 38

# VW Bus T5

Vehicles without blackout blind on the A-pillar



To the product:



## 3-way Cab System

Custom speaker mounts on the dashboard achieve a wide and spatial soundstage with a 55mm neodymium midrange driver and 19mm softdome neodymium tweeter each. Two 165mm power woofers are used in the vehicle doors. The installation is done with vehicle-specific mounting adapters in the original installation openings. The acoustically calibrated crossovers optimize the sound system with a detailed sound image and spirited sound dynamics.

### Loudspeaker equipment:

2x 165 mm JEHNERT Power Woofer »XM165«  
2x 55 mm Mitteltöner »XE55«  
2x 19 mm Neodym-Softdome-Hochtöner »XE19«  
JEHNERT crossovers, vehicle specific calibrated

### Technical data:

Load capacity duration / music: 2x 70 / 140 Watt  
Transmission range: 49 - 22.000 Hz  
Impedance: 4 Ohm  
rec. Amplifier power: ab 2 x 50 - 100 Watt @ 4 Ohm



Mid-high module in the A-pillar

## Soundpackage 1 »Cab« T5

### Cab:

- 3-way sound system (art. no. 65600)
- Subwoofer of your choice (p. 20-21)  
(art.-no. 17022 - ideal for space-saving installation under the passenger seat)
- digital 5-channel amplifier (Art.-No. 11086 - p. 16)
- incl. pre-installed VW sound setup
- "plug & play" connection cable for subwoofer and amplifier



3-way front system incl. 165 mm woofer for car doors



5 channel DSP amplifier



Bass Reflex Subwoofer

3-way Cab System T5 165 mm Power Woofer	65600
3-way Cab System T5 200mm Flat-Woofer	65610

Soundpackage 1 with digital high-performance amplifier »11086«	69100-82
--	----------

### Optional accessories (for further accessories, see p. 18-19):

Amplifier control for subwoofer control (p. 17)	68495
Radio adapter cable for orig. VW Radio T5	11088

A 2- or 3-way rear system provides the optimal room sound supplement (further information on p. 46).

# VW Bus T6 / T6.1 / T6.1 California

To the product:



## 3-way Cab System

The 3-way sound system consisting of two soft-dome neodymium tweeters, high-end midrange drivers, JEHNERT Power Woofer and vehicle-specific crossovers optimize the sound experience in the T6.1. The specially developed midrange-tweeter modules in the A-pillars provide a perfect sound stage. For the T6.1 California equipment variant (models incl. blackout blind), the tweeters are installed in the factory installation location of the A-pillar and midrange module in the vehicle doors. For a spirited sound reproduction, the woofers in the factory installation locations. Color at choice: anthracite or light gray

### Loudspeaker equipment:

2x 165 mm JEHNERT Power Woofer »XM165«  
2x 80 mm midrange driver »XE80«  
2x 26 mm neodymium soft dome tweeter »XE26«  
JEHNERT crossovers, vehicle specific calibrated

### Technical data:

Load capacity duration / music: 2x 70 / 140 Watt  
Transmission range: 49 - 22.000 Hz  
Impedance: 4 Ohm  
rec. Amplifier power: ab 2 x 50 - 100 Watt @ 4 Ohm

## Soundpackage 1 »Cab« T6 / T6.1

### Cab:

- 3-way sound system (art. no. 65400/ 65410)
- Subwoofer of your choice (p. 20-21)  
(Art.-No. 17022 - ideal for space-saving installation under the passenger seat)
- digital 5-channel amplifier (Art.-No. 11086 - p. 16)
- incl. pre-installed VW sound setup
- »plug & play« connection cable for subwoofer and amplifier



Mid-high module in the A-pillar



5 channel DSP amplifier



Bass Reflex Subwoofer



3-way front system incl. 165 mm woofer for car doors

	T6	T6.1
3-way Cab system	65400	65410

Soundpackage 1 with digital high-performance amplifier »11086«	69400-82	69410-82
--	----------	----------

### Optional accessories (for further accessories, see p. 18-19):

Amplifier control for subwoofer control (p. 17)	68495
Radio adapter cable for orig.VW Radio T6/ T6.1 / T6.1 California	11092

## Soundpackage 1 »Cab« T6.1 California

### Cab:

- 3-way sound system (art. no. 65420)
- Subwoofer of your choice (p. 20-21)  
(Art.-No. 17022 - ideal for space-saving installation under the passenger seat)
- digital 5-channel amplifier (Art.-No. 11086 - p. 16)
- incl. pre-installed VW sound setup
- »plug & play« connection cable for subwoofer and amplifier



Midrange module in the door panel



5 channel DSP amplifier



Bass Reflex Subwoofer



3-way front system incl. 165 mm woofer for car doors

3-way Cab system T6.1 California	65420
----------------------------------	-------

Soundpackage 1 with digital high-performance amplifier »11086«	69420-82
--	----------

### Optional accessories (for further accessories, see p. 18-19):

Amplifier control for subwoofer control (p. 17)	68495
Radio adapter cable for orig.VW Radio T6 / T6.1 / T6.1 California	11092



# VW Bus T6 und T6.1

## 2-way und 3-way Rearsystem

To the product:



### 2-way Front system plug & play für T6 & T6.1

The 2-way sound system for the cab guarantees high quality and first-class listening pleasure. Custom-fit 25mm high-end tweeters and 165mm woofers made of paper cone provide an absolute sound upgrade in the VW T6/T6.1. For easy installation, the original installation slots and original VW connectors are used for easy installation. The 2-way system is compatible with the VW blackout system in the VW T6/T6.1 California and can be upgraded with a powerful subwoofer and a 5 channel DSP amplifier.

### Soundpackage 1 »Cab«

#### Cab:

- 2-way sound system (VW T6 item no. 65450, VW T6.1 item no. 65460)
- Subwoofer of choice (p. 20-21)
- digital 5-channel amplifier selectable in 2 power classes (art.-no. 11062 or 11086 - p. 16)
- incl. pre-installed VW sound setup
- "plug & play" connection cable for subwoofer and amplifier



2-way Front system



5 channel DSP amplifier



Subwoofer of choice

2-way Cab system VW T6	65450
Soundpackage 1 T6 with digital 5-channel amplifier »11062«	69220-62
Soundpackage 1 T6 with digital high-performance amplifier »11086«	69220-86
2-way Cab system VW T6.1	65460
Soundpackage 1 T6.1 with digital 5-channel amplifier »11062«	69230-62
Soundpackage 1 T6.1 with digital high-performance amplifier »11086«	69230-86
Optional accessories (for further accessories, see p. 18-19):	
Amplifier control for subwoofer control (p. 17)	68495
Radio adapter cable for orig.VW-Radio T6 / T6.1	11092

### 2-way Rearsystem

An optional 2-way rear system for the tailgate completes the front system with perfect surround sound. Contrary to the factory speaker positioning, the system is integrated above the rear bed.



2-way Rear system (Tailgate)

#### Loudspeaker equipment:

2x 55 mm neodymium midrange driver »XE55«  
2x 26 mm neodymium soft dome tweeter »XE26«  
JEHNERT crossovers, vehicle specific calibrated



Order No. 67300

### 2- oder 3-way Rear system

The 3-way rear system consisting of mid-high modules for the C-pillar and 165 mm power woofer in the original installation locations of the side panel completes the sound experience in the T6.

**Note:** 3-way system only suitable for vehicles without furniture removal



#### Loudspeaker equipment (3-way variation):

2x 165 mm JEHNERT Woofer »XM165«  
2x 55 mm neodymium midrange driver »XE55«  
2x 26 mm neodymium soft dome tweeter »XE26«  
JEHNERT crossovers, vehicle specific calibrated

Dimensions (LxWxHxD): 14,5cm x 7,3cm x 20cm  
Installation depth: 10mm



2-way Rear system	67202
3-way Rear system	67200

# VW Crafter ab Bj. 2017 (2.Generation)

auch passend für MAN TGE



To the product:

## 3-way Cab system

Custom-made speaker mounts in black leatherette upholstery harmoniously integrate the midrange speakers and tweeters on the dashboard. In the vehicle doors, two powerful 165 mm JEHNERT Power Woofer produce a powerful low frequency range for an impressive sound presentation. The woofers are installed directly into the factory mounting holes using a precision-fit mounting adapter - mounting adapter included in the scope of delivery.

### Loudspeaker equipment:

2x 165 mm JEHNERT Power Woofer »XM165«  
2x 100 mm Mitteltöner »XE100«  
2x 26 mm neodymium soft dome tweeter »XE26«  
JEHNERT crossovers, vehicle specific calibrated

### Technical data:

Load capacity duration / music: 2x 80 / 160 Watt  
Transmission range: 49 - 22.000 Hz  
Impedance: 4 Ohm  
rec. Amplifier power: ab 2 x 50 - 100 Watt @ 4 Ohm



Mittelton-Modul Armaturenbrett - Bezug Kunstleder, Struktur und Farbe dem Armaturenbrett angepasst



Tieftöner in der Fahrzeugtüre

## Soundpackage 1 »Cab«

### Cab:

- 3-way Soundsystem (Art.-Nr. 65100)
- Subwoofer of choice (S. 20-21)
- digitaler High Power 5-Kanal Verstärker (Art.-Nr. 11086 - S. 16)
- inkl. vorinstalliertem fahrzeugspezifischen Klang-Setup
- »plug & play« Anschlusskabel für Subwoofer und Verstärker



3-way Front system



5 channel DSP amplifier



Subwoofer of choice

## Soundpackage 2 »Cab und Living area«

### Cab:

- Scope of delivery Soundpackage 1

### Living area:

- 2 x Multibox 6600, 6600-4K, 7000 or 7000-4K, color of choice (p. 26-29)



2x Multibox of choice

3-way Cab system	65100
Soundpackage 1 with digital high-performance amplifier »11086«	69101-82
Soundpackage 2 with digital high-performance amplifier »11086«	69102-82
Optional accessories (for further accessories, see p. 18-19):	
Amplifier control for subwoofer control (p. 17)	68495
Radio adapter cable for orig.VW Radio	11092

# Iveco Daily III

until YOM 2006



# Iveco Daily VI

from YOM 2014



To the product:



Daily III

To the product:



Daily VI

## 2-way Cab system

High-quality speakers and the vehicle-optimized tuning of the crossovers guarantee excellent music reproduction. Two 26 mm neodymium tweeters on the dashboard provide a very clear and detailed sound stage in direct listening position. In the vehicle doors, two powerful 165 mm JEHNERT Power Woofer produce a powerful low frequency range for an impressive sound presentation. The woofers are installed directly into the factory mounting holes using a precision-fit mounting adapter - mounting adapter included in the scope of delivery.

### Loudspeaker equipment:

2x 165 mm JEHNERT Power Woofer »XM165«  
2x 26 mm neodymium soft dome tweeter »XE26«  
JEHNERT crossovers, vehicle specific calibrated

### Technical data:

Load capacity duration / music: 2x 80 / 160 Watt  
Transmission range: 55 - 22.000 Hz  
Impedance: 4 Ohm  
rec. Amplifier power: ab 2 x 70 - 150 Watt @ 4 Ohm



**Daily III until YOM 2006**  
Woofer module door panel



**Daily VI from YOM 2014**  
Woofer module door panel

## Soundpackage 1 »Cab«

### Cab:

- 2-way sound system (art. no. 35103) or (art. no. 65850)
- subwoofer of choice (p. 20-21)
- digital 5-channel amplifier selectable in 2 power classes (art.-no. 11062 or 11086 - p. 16)
- incl. pre-installed vehicle-specific sound setup
- »plug & play« connection cable for subwoofer and amplifier



5 channel DSP amplifier



Subwoofer of choice



2-way Daily III Front system



2-way Daily VI Front system

## Soundpackage 2 »Cab und Living area«

### Cab:

- Scope of delivery Soundpackage 1

### Living area:

- 2 x Multibox 6600, 6600-4K, 7000 or 7000-4K, color of choice (p. 26-29)



2x Multibox of choice

	Daily III, until YOM 2006	Daily VI, ab Bj. 2014
2-way Cab system	35103	65850
Soundpackage 1 with digital 5-channel amplifier »11062«	65101-62	69801-62
Soundpackage 1 with digital high-performance amplifier »11086«	-	69801-82
Soundpackage 2 with digital 5-channel amplifier »11062«	65102-62	69802-62
Soundpackage 2 with digital high-performance amplifier »11086«	65102-82	69802-82
Optional accessories (for further accessories, see p. 18-19): Amplifier control for subwoofer control (p. 17)	68495	



# Ford Transit / Tourneo »Custom«

Facelift from year of construction 2018, vehicles with A-pillar roller blind or Westfalia

To the product:



## 2-way Front system

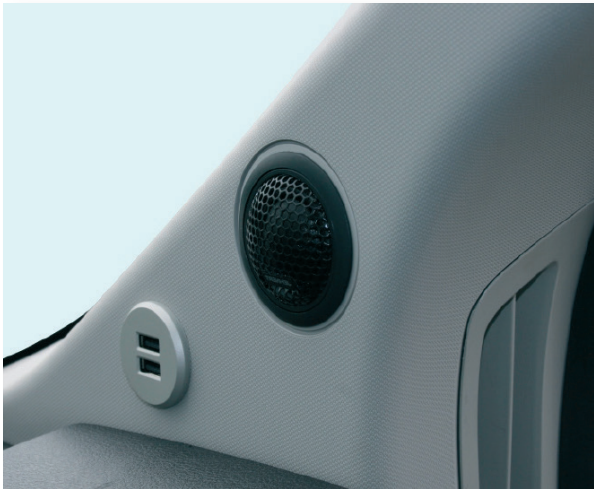
The 2-way sound system for the cab guarantees high quality and first-class listening pleasure. Powerful 165 mm JEHNERT Power Woofer replace the factory speakers in the vehicle doors and provide a spirited sound. Two high-quality 26 mm soft-dome neodymium tweeters integrated in the A-pillars offer crystal-clear highs in an optimal listening position. Due to the vehicle-specific crossovers, the sound system achieves a very high sound quality with a clear sound image and detailed high-frequency reproduction.

### Loudspeaker equipment:

2x 165 mm JEHNERT Power Woofer »XM165«  
2x 26 mm neodymium soft dome tweeter »XE26«  
JEHNERT crossovers, vehicle specific calibrated

### Technical data:

Load capacity duration / music: 2x 80 / 160 Watt  
Transmission range: 49 - 22.000 Hz  
Impedance: 4 Ohm  
rec. Amplifier power: ab 2 x 50 - 100 Watt @ 4 Ohm



Tweeter mounted in factory installation location

## Soundpackage 1 »Cab«

### Cab:

- 2-way sound system (p. 65950)
- subwoofer of choice (p. 20-21)
- digital 5-channel amplifier selectable in 2 power classes (art.-no. 11062 or 11086 - p. 16)
- incl. pre-installed Ford sound setup
- »plug & play« connection cable for subwoofer and amplifier



2-way Front system



5 channel DSP amplifier



Subwoofer of choice

## Soundpackage 2 »Cab und Living area«

### Cab:

- Scope of delivery Soundpackage 1

### Living area:

- 2 x Multibox 6600, 6600-4K, 7000 or 7000-4K, color of choice (p. 26-29)



2x Multibox of choice

2-way Cab system	65950
Soundpackage 1 with digital 5-channel amplifier »11062«	66920-62
Soundpackage 1 with digital high-performance amplifier »11086«	66920-82
Soundpackage 2 with digital 5-channel amplifier »11062«	66922-62
Soundpackage 2 with digital high-performance amplifier »11086«	66922-82
Optional accessories (for further accessories, see p. 18-19):	
Amplifier control for subwoofer control (p. 17)	68495
Radio adapter cable for orig.Ford Radio bis Bj. 2018	11074
Radio adapter cable for orig.Ford Radio ab Bj. 2018	11075

# FORD Transit / Tourneo »Custom«

from YOM 2012



To the product:



Mid-high module mounted on the A-pillar until YOM 18

## 3-way Cab system

In precisely tuned listening positions, a 55 mm midrange driver and 26 mm tweeter each in vehicle-specific midrange-tweeter modules on the A-pillars achieve a perfect sound stage. A 165 mm JEHNERT Power Woofer (mounting adapter included) in the factory installation location of each vehicle door ensures a powerful low-frequency range. The sound system is vehicle acoustically specially calibrated to the Ford Custom. This guarantees an optimal sound image as well as a detailed music reproduction. Only suitable for vehicles with original Ford A-pillar trim (without blind).

### Loudspeaker equipment:

2x 165 mm JEHNERT Power Woofer »XM165«  
2x 55 mm Mitteltöner »XE55«  
2x 26 mm neodymium soft dome tweeter »XE26«  
JEHNERT crossovers, vehicle specific calibrated

### Technical data:

Load capacity duration / music: 2x 80 / 160 Watt  
Transmission range: 49 - 22.000 Hz  
Impedance: 4 Ohm  
rec. Amplifier power: from 2 x 50 - 100 Watt @ 4 Ohm

## Soundpackage 1 »Cab«

### Cab:

- 3-way sound system (p. 65900)
- Subwoofer of choice (p. 20-21)  
(art.-no. 17008E - ideal for space-saving installation under the passenger seat)
- digital 5-channel amplifier (Art.-No. 11086 - p. 16)
- incl. pre-installed Ford sound setup
- »plug & play« connection cable for subwoofer and amplifier



5 channel DSP amplifier



Bass Reflex Subwoofer



3-way Front system

3-way Cab system (Bj. 2012-2018) 65900

Soundpackage 1 with digital high-performance amplifier »11086« (Bj. 2012-2018) 69900-82

### Optional accessories (for further accessories, see p. 18-19):

Amplifier control for subwoofer control (p. 17) 68495  
Radio adapter cable for orig. Ford Radio unit! YOM 2018 11074

## 2-way Rear system

An optional 2-way rear system for the passenger area completes the front system with perfect surround sound. Two 165 mm woofers in the rear side panels (adapter plates in scope of delivery) provide greatly improved fundamental sound reproduction.

The 26 mm tweeters are integrated in the C-pillars.

### Loudspeaker equipment:

2x 165 mm JEHNERT Power Woofer »XM165«  
2x 26 mm neodymium soft dome tweeter »XE26«  
JEHNERT crossovers, vehicle specific calibrated



2-way Rear system 65960



165mm woofer in the side panel (installation situation)

# FORD Transit / Tourneo »Custom«

from YOM 2018



To the product:

## 3-way Cab system

In precisely tuned listening positions, one 80 mm midrange driver and 26 mm tweeter each in vehicle-specific midrange-tweeter modules on the A-pillars achieve a perfect sound stage. A 165 mm JEHNERT Power Woofer (mounting adapter included) in the factory installation location of each vehicle door ensures a powerful low-frequency range. The sound system is vehicle acoustically specially calibrated to the Ford Custom. This guarantees an optimal sound image as well as a detailed music reproduction. Only suitable for vehicles with original Ford A-pillar trim (without blind).

**Note:** Due to the factory Ford radio is an amplifier (optimally supplemented by a subwoofer supplemented) absolutely necessary to achieve a corresponding increase in sound!

## Soundpackage 1 »Cab«

### Cab:

- 3-way sound system (item no. 65970)
- Subwoofer of choice
- digital 5-channel amplifier (part no. 11086)
- incl. pre-installed Ford sound setup
- »plug & play« connection cable for subwoofer and amplifier



5 channel DSP amplifier



Subwoofer of choice



3-way Front system

3-way Cab system (from YOM 2018)	65970
Soundpackage 1 with digital high-performance amplifier »11086« ( from YOM 2018)	66970-86
Ford Transit Custom Door Subwoofer	17029

### Optional accessories (for further accessories, see p. 18-19):

Amplifier control for subwoofer control (p. 17)	68495
Insulation of the vehicle doors/side panels	27980
Radio adapter cable for orig. Ford Radio from YOM 2018	11075

## The specific Ford Transit Custom door subwoofer

The bass reflex subwoofer is installed in the driver's door to save space and perfectly rounds off the sound image in the lower frequency response. The completely enclosed subwoofer cabinet with side bass outlet. Due to the space-saving installation, the equipment variant of the cab is irrelevant and the subwoofer is suitable for all Ford Tourneo models from year of manufacture 2018, this subwoofer forms the optimal way to integrate a subwoofer, should no subwoofer under the driver-passenger seat be suitable.



Power »Standard«: 1x 100 Watt Sinus / 200 Watt @ 2 Ohm      Order No. 17029



Mid-high module mounted on the A-pillar from YOM 18



Ford Transit Custom door subwoofer 17029

A 2-way rearsystem provides the optimal room sound supplement (more info p. 50)



# Ford Transit

from year 2014 - suitable for vehicles without A-pillar roller blind

To the product:



## 3-way Cab system

In order to optimize the sound characteristics for the mid-high range of the cab, two 70 mm midrange drivers and two 26 mm tweeters in vehicle-specific mid-high modules on the A-pillars achieve an impressive sound stage in a precisely tuned listening position.

In the vehicle doors, two powerful 165 mm JEHNERT Power Woofer produce a powerful low frequency range for an impressive sound presentation. The woofers are installed with a precision-fit mounting adapter. The sound system is vehicle acoustically specially tuned to the cab. This guarantees a first-class sound image as well as a detailed music reproduction. To achieve the full sound performance of the sound system, we recommend the Sound Package I, which significantly increases the sound performance of the system through the additional amplifier and subwoofer.

### Loudspeaker equipment:

2x 165 mm JEHNERT Power Woofer »XM165«  
2x 70 mm Mitteltöner »XF70«  
2x 26 mm neodymium soft dome tweeter »XE26«  
JEHNERT crossovers, vehicle specific calibrated

### Technical data:

Load capacity duration / music: 2x 70 / 140 Watt  
Transmission range: 49 - 22.000 Hz  
Impedance: 4 Ohm  
rec. Amplifier power: ab 2 x 50 - 100 Watt @ 4 Ohm



Mid-tweeter module in the A-pillar, driver's side

## Soundpackage 1 »Cab«

### Cab:

- 3-way sound system (p. 65990)
- Subwoofer of choice (p. 20-21)
- digital 5-channel amplifier selectable in 2 power classes (art. no. 11062 or 11086 - p. 16)
- incl. pre-installed vehicle-specific sound setup
- »plug & play« connection cable for subwoofer and amplifier



3-way Front system



5 channel DSP amplifier



Subwoofer of choice

## Soundpackage 2 »Cab und Living area«

### Cab:

- Scope of delivery Soundpackage 1

### Living area:

- 2 x Multibox 6600, 6600-4K, 7000 or 7000-4K, color of choice (p. 26-29)



2x Multibox of choice

3-way Cab system	65990
Soundpackage 1 with digital 5-channel amplifier »11062«	69991-62
Soundpackage 1 with digital high-performance amplifier »11086«	69991-82
Soundpackage 2 with digital 5-channel amplifier »11062«	69992-62
Soundpackage 2 with digital high-performance amplifier »11086«	69992-82

### Optional accessories (for further accessories, see p. 18-19):

Amplifier control for subwoofer control (p. 17)	68495
Radio adapter cable for orig.Ford Radio bis Bj. 2018	11074

# Ford Transit

from YOM 2018 -suitable for vehicles with and without A-pillar blinds



To the product:

## 3-way Cab system

To optimize the sound characteristics for the mid-high range of the cab, two 80 mm midrange drivers and 26 mm tweeters in vehicle-specific mid-high modules on the dashboard each achieve an impressive sound stage in a precisely tuned listening position. In the vehicle doors, two powerful 165 mm JEHNERT Power Woofer produce a powerful low frequency range for an impressive sound presentation. The woofers are installed using a mounting adapter. The sound system is vehicle acoustically specially tuned to the cab. This guarantees a first-class sound image as well as a detailed music reproduction.

**Note:** Due to the factory Ford radio is an amplifier (optimally supplemented by a subwoofer supplemented) is absolutely necessary to achieve a corresponding increase in sound!

### Loudspeaker equipment:

2x 165 mm JEHNERT Power Woofer »XM165«  
2x 80 mm midrange driver »XE80«  
2x 26 mm neodymium soft dome tweeter »XE26«  
JEHNERT crossovers, vehicle specific calibrated

### Technical data:

Load capacity duration / music: 2x 70 / 140 Watt  
Transmission range: 49 - 22.000 Hz  
Impedance: 4 Ohm  
rec. Amplifier power: ab 2 x 50 - 100 Watt @ 4 Ohm



Mid-tweeter module on the dashboard, driver's side

## Soundpackage 1 »Cab«

### Cab:

- 3-way sound system (item no. 65940)
- Subwoofer of choice
- digital 5-channel amplifier (part no. 11086)
- incl. preinstalled Ford sound setup
- »plug & play« connection cable for subwoofer and amplifier



3-way Front system



5 channel DSP amplifier



Subwoofer of choice

## Soundpackage 2 »Cab und Living area«

### Cab:

- Scope of delivery Soundpackage 1

### Living area:

- 2 x Multibox 6600, 6600-4K, 7000 or 7000-4K, color of choice (p. 26-29)



2x Multibox of choice

3-way Cab system	65940
Soundpackage 1 with digital 5-channel amplifier »11062«	69941-62
Soundpackage 1 with digital high-performance amplifier »11086«	69941-82
Soundpackage 2 with digital 5-channel amplifier »11062«	69942-62
Soundpackage 2 with digital high-performance amplifier »11086«	69942-82
<b>Optional accessories (for further accessories, see p. 18-19):</b>	
Amplifier control for subwoofer control (p. 17)	68495
Radio adapter cable for orig.Ford Radio ab Bj. 2018	11075

# Carthago motorhomes



## On the road traveling and not doing without anything...

For Carthago motorhomes, there are two ways to set up the front system, on the one hand the integration of the speakers in special speaker mounts, which are mounted beautifully on the dashboard. Due to the special angle of the speakers in the molded part, all acoustic conditions are optimally taken into account. In addition, the mount is covered with leather and the loudspeaker is additionally protected and concealed by an acoustic fabric panel. Secondly, the speakers are installed directly on the dashboard.

The high-quality 2-way system in precisely matched listening positions for driver and front passenger optimizes the sound characteristics in the mid-high range of the cab. The sound system is acoustically tuned to the respective cab.

This guarantees an optimal sound image as well as a detailed music reproduction.

The living room speakers offer brilliant sound performance in the living area thanks to the 2-way system. Due to the innovative design, the living room boxes harmoniously complement the homely ambience. A power-saving 5-channel amplifier with the latest 56-bit DSP technology and a bass reflex subwoofer provide impressive sound dynamics that will delight music lovers.



Sound system »Integrated« Cab  
(without speaker recording)



### Technical data:

Load capacity duration / music: 2x 60 / 120 Watt  
Transmission range: 75 - 25.000 Hz  
Impedance: 4 Ohm  
rec. Amplifier power: ab 2 x 50 - 100 Watt @ 4 Ohm

### Loudspeaker equipment:

2x 26 mm neodymium soft dome tweeter »XE26«  
2x 100 mm Mitteltöner »XE100«  
JEHNERT crossovers, vehicle specific calibrated



Sound system module »chic c-line/e-line/s-plus«  
Fiat Ducato / Iveco Daily from YOM 2019 (Art. No. 69840)



Mid-high system on the dashboard  
»Mercedes-Sprinter« (Art. No. 60699)



Mid-high module system on the dashboard  
»chic e-line until 2019« (Art. No. 69830)



Sound system module »highliner« (revision flap)  
(Art. No. 69834)

Front system of your choice included in the respective sound package:	Order No.
Fiat Ducato incl. leather application on the dashboard	69840
Fiat Ducato incl. root wood application dashboard	69830
Vehicle base Mercedes Sprinter	60699
Highliner	69834



Multibox »7000« in the entrance area



Multibox »7000« im Living area



To the product:



## Soundpackage 1 »without speaker recording«

### Cab:

- 2-way sound system integrated directly on the dashboard
- subwoofer of choice (p. 20-21)
- digital 5-channel amplifier selectable in 2 power classes (art. no. 11062 or 11086 - p. 16)
- incl. pre-installed vehicle specific sound setup
- »plug & play« connection cable for subwoofer and amplifier



Cab system



5 channel DSP amplifier



Subwoofer of choice

## Soundpackage 1 »incl. speaker recording«

### Cab:

- 2-way Soundsystem incl. speaker recording
- Subwoofer of choice (S. 20-21)
- digital 5-channel amplifier selectable in 2 power classes (art. no. 11062 or 11086 - p. 16)
- incl. pre-installed vehicle specific sound setup
- »plug & play« connection cable for subwoofer and amplifier



Cab system



5 channel DSP amplifier



Subwoofer of choice



Mid-High Module

## Soundpackage 2

### Cab:

- see Soundpackage 1 »without speaker recording«

### Living area:

- 2 x Multibox 6600, 6600-4K, 7000 or 7000-4K, color of choice (p. 26-29)



2x Multibox of choice

## Soundpackage 2

### Cab:

- see Soundpackage 1 »incl. speaker recording«

### Living area:

- 2 x Multibox 6600, 6600-4K, 7000 or 7000-4K, color of choice (p. 26-29)



2x Multibox of choice

Soundpackage 1 »directly integrated« with standard amplifier »11062« 69311-62  
Soundpackage 1 »directly integrated« with high power amplifier »11086« 69311-82

Soundpackage 2 »directly integrated« with standard amplifier »11062« 69312-62  
Soundpackage 2 »directly integrated« with high power amplifier »11086« 69312-82

Optional accessories (for further accessories, see p. 18-19):  
Amplifier control for subwoofer control (p. 17) 68495

Soundpackage 1 »inkl. Modul« with standard amplifier »11062« 69501-62  
Soundpackage 1 »inkl. Modul« with high power amplifier »11086« 69501-82

Soundpackage 2 »inkl. Modul« with standard amplifier »11062« 69502-62  
Soundpackage 2 »inkl. Modul« with high power amplifier »11086« 69502-82

Important note:  
Specify desired front system when ordering (see p. 52).

# Integrated motorhomes

## Cab system

In precisely coordinated listening positions for driver and front passenger, the system optimizes the sound characteristics in the mid-high range of the cab. A 165 mm woofer (if installation is possible) in the side panels on the right and left provides low-frequency and fundamental support.

## 5-channel DSP amplifier - the turbo for the sound system

The compact, small 5-channel amplifier with integrated digital signal processor is very power-saving and therefore highly recommended especially for motorhomes. This amplifier is used for the complete sound system in the Cab and Living area and is very space-saving. For each floor plan and choice of installed components, specific sound setups are calibrated and recorded. Also the standing and driving mode can be considered in the setups.

## Subwoofer - "Maxi" in sound and "Mini" in volume

An additional subwoofer provides spirited sound dynamics and perfects the surround sound in the low frequency range. Thanks to a precisely calculated bass reflex opening, the subwoofer provides maximum sound quality - despite the small cabinet volume - and optimizes the sound system into a perfect dynamic sound package.

## 2-way Living room system

Two living room boxes with integrated 2-way sound system provide the ideal room sound supplement.



*Loudspeaker placement on the dashboard*



*Mid-high module on the dashboard*



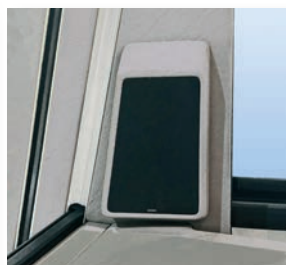
*Speaker integration on the dashboard*



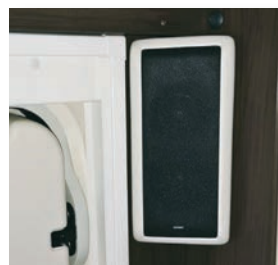
*Subwoofer installed to save space (e.g. under the seating area)*



*Mid-high module under the lift bed*



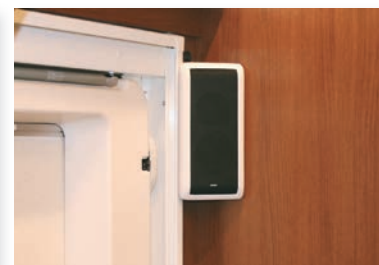
*Mid-high module on A-pillar*



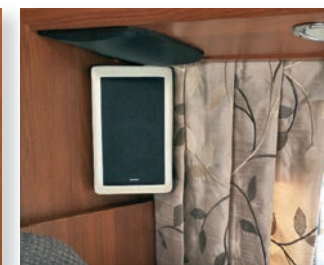
*Living space box at the entrance*



*living room box in the living area*



*Living room box at the entrance*



*Living room box on the seating area*

# Maxi Liner

Concorde / Morelo / Phoenix and much more



To the product:

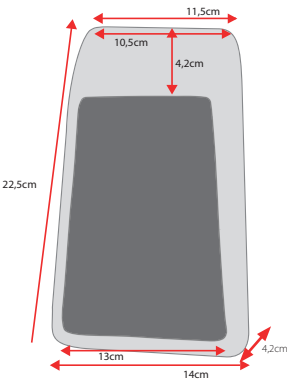
## 3-way Cab system

In order to optimize the sound characteristics in the mid-treble range of the cab, a high-quality mid-treble system is positioned in the A-frame above the dashboard. This arrangement ensures a wide stage imaging and optimal radiation. The extension with a 165mm woofer in each of the side panels rounds off the frequency response perfectly. For color matching, the cover leather can be selected in black or cream beige.

**Loudspeaker equipment:**  
 2x 165 mm JEHNERT Power Woofer »XM165«  
 2x 80 mm midrange driver »XE80«  
 2x 26 mm neodymium soft dome tweeter »XE26«  
 JEHNERT crossovers, vehicle specific calibrated

**Technical data:**  
 Load capacity duration / music: 2x 80 / 160 Watt  
 Transmission range: 49 - 22.000 Hz  
 Impedance: 4 Ohm  
 rec. Amplifier power: ab 2 x 50 - 100 Watt @ 4 Ohm

Dimensions mid-high module (HxWxD in cm): 22.5 x 14 x 4.2



Midrange module A-pillar - (Fig.without cover)



Midrange module A-pillar - (Fig. with cover)

## Soundpackage 1 »Cab«

### Cab:

- 3-way Soundsystem (Art.-Nr. 60500)
- Subwoofer of choice (S. 20-21)
- digitaler High Power 5-Kanal Verstärker (Art.-Nr. 11086 - S. 16)
- inkl. vorinstalliertem fahrzeugspezifischen Klang-Setup
- »plug & play« Anschlusskabel für Subwoofer und Verstärker



3-way Front system



5 channel DSP amplifier



Subwoofer of choice

## Soundpackage 2 »Cab und Living area«

### Cab:

- Scope of delivery Soundpackage 1

### Living area:

- 2 x Multibox 6600, 6600-4K, 7000 or 7000-4K, color of choice (p. 26-29)



2x Multibox of choice

3-way Cab system	60500
Soundpackage 1 with digital high-performance amplifier »11086«	60501-86
Soundpackage 2 with digital high-performance amplifier »11086«	60502-86
Optional accessories (for further accessories, see p. 18-19):	
Amplifier control for subwoofer control (p. 17)	68495



# Integrated motorhomes



## Individual installation solutions-perfectly integrated!

Our high-quality sound concepts for integrated motorhomes guarantee brilliant sound and lend exclusive ambience. In an acoustically optimal position, a separate mid-high system on the dashboard provides a wide and open sound stage in the driver's cab. The low-frequency foundation is formed by a 130mm or 165mm woofer in each of the side panels, depending on the space available. this guarantees an outstanding sound image with detailed music reproduction.

On customer request, we also manufacture individual midrange-tweeter modules, depending on the cab and the space available. The sound characteristics are optimized for the driver and front passenger in precisely coordinated listening positions.

Two exclusive living room speakers complement the cab system with perfect surround sound in the living or sleeping area. Thanks to their innovative design, the living room speakers can be individually selected to harmoniously complement the living room ambience. A power-saving 5-channel amplifier with the latest 56-bit DSP technology and a subwoofer available in various sizes complete the system with impressive sound dynamics that will delight music lovers.

### Your sound system made to measure:

Due to many different floor plans, we will be happy to put together your individual sound system with sample images free of charge.



Mid-high system on the dashboard ( arrangement varies depending on model type)



Mid-high system - next to driver's seat



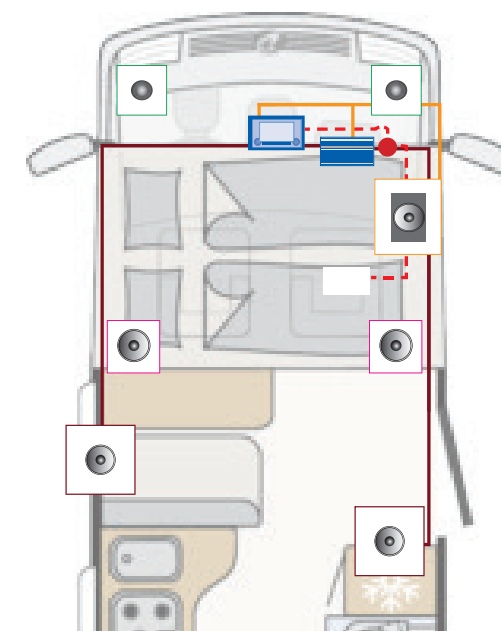
installation example mid-high system-varies according to model type



**Speaker placement 2-way-system:**  
2x 100 mm high-end midrange »XE100«  
2x 26 mm soft dome neodymium tweeter »XE26«  
JEHNERT crossovers, vehicle specific calibrated



**Speaker placement 3-way-system:**  
2x 130 mm / 165mm JEHNERT Power Woofer »XE130G / XM165«  
2x 100mm high-end midrange »XE100«  
2x 26 mm soft dome neodymium tweeter »XE26«  
JEHNERT crossovers, vehicle specific calibrated



To the product:



## 2-way Soundpackage 1 »Cab«

### Cab:

- 2-way sound system
- Subwoofer of choice (p. 20-21)
- digital 5-channel amplifier selectable in 2 power classes (art. no. 11062 or 11086 - p. 16)
- incl. pre-installed vehicle specific sound setup
- »plug & play« connection cable for subwoofer and amplifier



2-way Cab system



5 channel DSP amplifier



Subwoofer of choice

## 3-way Soundpackage 1 »Cab«

### Cab:

- 3-way sound system
- Subwoofer of choice (p. 20-21)
- digital 5-channel amplifier selectable in 2 power classes (art. no. 11062 or 11086 - p. 16)
- incl. pre-installed vehicle specific sound setup
- »plug & play« connection cable for subwoofer and amplifier



3-way Cab system



5 channel DSP amplifier



Subwoofer of choice

## 2-way Soundpackage 2 »Cab and Living area«

### Cab:

- see 2-way Soundpackage 1 »Cab«

### Living area:

- 2 x Multibox 6600, 6600-4K, 7000 or 7000-4K, color of choice (p. 26-29)



2x Multibox of choice

## 3-way Soundpackage 2 »Cab and Living area«

### Cab:

- see 3-way Soundpackage 1 »Cab«

### Living area:

- 2 x Multibox 6600, 6600-4K, 7000 or 7000-4K, color of choice (p. 26-29)



2x Multibox of choice

Soundpackage 1 »2-way« with digital 5-channel amplifier »11062«	69110-621
Soundpackage 1 »2-way« with digital high-performance amplifier »11086«	69110-821

Soundpackage 2 »2-way« with digital 5-channel amplifier »11062«	69110-622
Soundpackage 2 »2-way« with digital high-performance amplifier »11086«	69110-822

Optional accessories (for further accessories, see p. 18-19):	
Amplifier control for subwoofer control (p. 17)	68495

Soundpackage 1 »3-way« with 130 mm woofer and standard amplifier »11062«	69130-621
Soundpackage 1 »3-way« with 130 mm woofer and high-power amplifier »11086«	69130-821

Soundpackage 2 »3-way« with 130 mm woofer and standard amplifier »11062«	69130-622
Soundpackage 2 »3-way« with 130 mm woofer and high-power amplifier »11086«	69130-822

Soundpackage 1 »3-way« with 165 mm woofer and "standard amplifier »11062«	69165-621
Soundpackage 1 »3-way« with 165 mm woofer and "High-Power Amplifier »11086«	69165-821

Soundpackage 2 »3-way« with 165 mm woofer and "standard amplifier »11062«	69165-622
Soundpackage 2 »3-way« with 165 mm woofer and "High-Power Amplifier »11086«	69165-822

# Iveco Eurocargo MAN TGL / Mercedes Antos & Actros



To the product:



## 3-way Cab system

In precisely tuned listening positions, a 55 mm midrange driver and 26 mm tweeter each in vehicle-specific midrange-tweeter module on the A-pillars achieve a perfect sound stage. A 165 mm JEHNERT Power Woofer (specific mounting adapter included) in the factory installation location of each vehicle door ensures a powerful low-frequency range. The sound system is vehicle acoustically calibrated. This guarantees an optimal sound image and a detailed music reproduction.

### »Cab«

#### Cab:

- 3-way sound system consisting of:  
2x 165 mm JEHNERT Power Woofer »XM165«  
2x 55 mm midrange driver »XE55«  
2x 26 mm neodymium soft dome tweeter »XE26«  
JEHNERT crossovers, vehicle specific calibrated



3-way Front system

3-way Cab system

62100

Optional accessories (for further accessories, see p. 18-19):  
Ersatzlautsprecher für Tonwiedergabe Spurassistent

62109



Woofer »XM165« in the factory installation location of the vehicle



Mid-high module A-pillar »Iveco Eurocargo«



Mid-high module A-pillar »Mercedes Antos«



# Crosscamp for Toyota and Opel

## Basic models



To the product:

### Sound concept in CROSSCAMP

The factory tweeters and woofers in the vehicle doors on the right and left as well as rear speakers are retained. Through specific DSP programming of the amplifier, the power quality of the speakers can be optimized so that they lead to a good sound result in the sound concept. In addition, this makes the sound concept identically suitable for the base vehicle Toyota as well as Opel.

A power-saving 5-channel amplifier with the latest 56-bit DSP technology and a bass reflex subwoofer provide an impressive sound dynamics that music lovers\* enthusiastic. The digital 5-channel amplifier is delivered with 2 sound setups for driving and living so that it is easy to switch between the two modes.

The JEHNERT Bass Reflex Subwoofer, with 200mm quad voice coil, is positioned under the seat console to save space and therefore requires no storage space in the vehicle. Likewise, the modular construction of the vehicle remains, so that the subwoofer is also removed when the row of seats is removed and does not require any cargo space. Despite the small enclosure volume, the Bass Reflex subwoofer delivers maximum sound quality.

The sound package also includes the control for subwoofer and setup switch as well as the plug & play adapter cable for connection to the factory radio.

The optional Bluetooth® module (**Order No. 11086-BT**) adds a Bluetooth® audio streaming function to the amplifier. Direct audio transmission in CD quality is possible. This makes it possible to use the sound system even without switching on the radio..

#### Included in the Soundpackage:

- 1x 20cm subwoofer 4x3 Ohm in vehicle-specific housing incl. mounting bracket and connection cable 3.3m
- 1x remote control URC for 5-channel amplifier
- 1x digital high power amplifier incl. crosscamp setup and connection cable 5m
- 1x "plug&play" adapter for T-cable set Toyota / Opel

	Opel Crosscamp	Toyota Crosscamp
Soundpackage with digital 5-channel amplifier »11062«	68721-62	68711-62
Soundpackage with digital high-performance amplifier »11086«	68721-82	68711-82
Optional accessories (for further accessories, see p. 18-19):		
AUX input or Bluetooth® module integrated in amplifier (p.19)	11062-AUX-Klinke / 11086-BT	
Rocker switch (p.19)	69499	



Crosscamp specific subwoofer under the seat console

# Caravan & Motorhomes

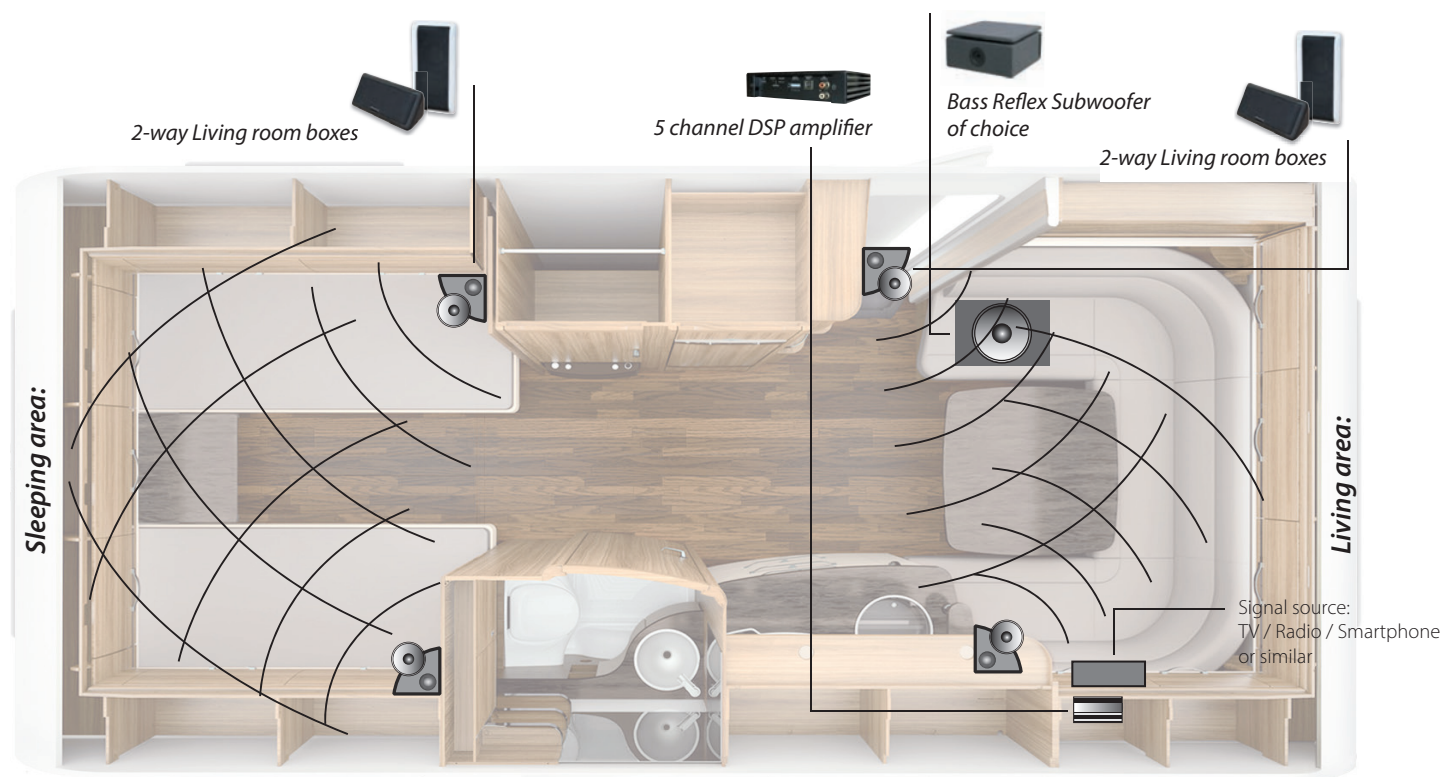
## Sound systems »Living and sleeping area«

### Individual with exclusive installation solution

Caravan or motorhome JEHNERT sound concepts for the living and sleeping area offer innovative solutions up to the 5.1 surround system. High-quality living room boxes in exclusive design (p. 26-29) guarantee brilliant sound and perfect integration.

According to your wishes, we put together your **individual sound system** made to measure - also with TV connection, or you simply choose from our standard program.

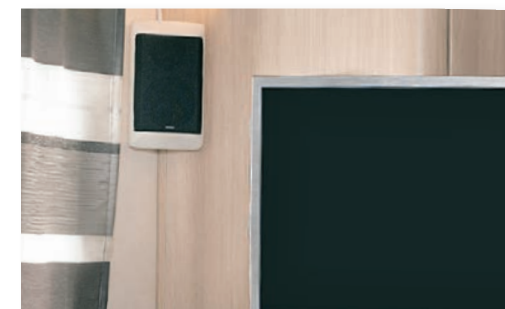
### Sound concept example »Living and sleeping area«



Multibox »5500« mounted in the sleeping area



Design living room box in corner shelf



2-piece living room box with corner mounting

To the product:



## Soundpackage 1 for »TV and Radio«

The complete sound package for "plug & play" connection to the TV includes two multiboxes of your choice and a mini amplifier specially designed for TV connection. Also included in the scope of delivery is the 3.5mm stereo jack cable for connection to TV, radio, smartphone or even tablet. The special feature of the 4 x 35 watt sound system is the size of the selectable multiboxes and the power-saving, extremely compact 4-channel amplifier. This allows you to enjoy movies and music while traveling even in the smallest spaces!

A Bluetooth® module (item no. 68497) for connecting smartphones or tablets is available as an option. Our recommendation for interference-free TV reception: interference suppression filter (art. no. 68498)

- 2 x Multibox of your choice: 6600, 6600-4K, 7000 or 7000-4K (p. 26-29)
- 4-channel amplifier »plug & play« (Art. No. 11306 - p. 15)
- 3.5mm stereo jack cable (2m)

**As optional extension for low frequency support we recommend:**

2x JEHNERT Power Woofer »XM165« incl. cover grille



4 channel amplifier



165 mm woofer extension



2x Multibox of choice

Soundpackage 1 without low frequency extension

69201-001

Soundpackage 1 incl. low frequency extension

69202-002

Optional accessories (for further accessories, see p. 18-19):

Amplifier control for subwoofer control (p. 17)

68495

## Soundpackage 2 for »TV and Radio«

The premium sound package includes two multiboxes and a subwoofer of your choice, a digital 5-channel amplifier and a 5m stereo jack cable for connection to TV, radio, smartphone or tablet. Due to the innovative design, the living room boxes harmoniously complement the homely ambience. The power-saving 5-channel amplifier with the latest 56-bit DSP technology, as well as a subwoofer selectable in various sizes, ensures impressive sound dynamics. subwoofer, which can be selected in various sizes. Depending on the sound requirements, the system can be optionally expanded with two additional living room boxes, thus further perfecting the spatial reproduction.

### »Premium Soundpackage«:

- 2 x Multibox of choice: 6600, 6600-4K, 7000 or 7000-4K (p. 26-29)
- Subwoofer of choice (p. 20-21)
- digital 5-channel amplifier selectable in 2 power classes (art. no. 11062 or 11086 - p. 16)
- incl. pre-installed vehicle-specific sound setup
- »plug & play« connection cable for subwoofer and amplifier



5 channel DSP amplifier



Subwoofer of choice



2x Multibox of choice

Soundpackage 2 with digital 5-channel amplifier »11062«

69202-62

Soundpackage 2 with digital high-performance amplifier »11086«

69202-82

Optional accessories (for further accessories, see p. 18-19):

Amplifier control for subwoofer control (p. 17)

68495

AUX input integrated in amplifier

11062-AUX-jack-Standard /  
11086-AUX-jack-High-Power



# JEHNERT SOUND SYSTEMS

**JEHNERT**  
*Sound Design*  
A U T O M O T I V E

## »Development and production of car audio systems«

Im Michelreis 14 Phone.: 07127-93457-0 sounddesign@jehnert.de  
72124 Pliezhausen Fax: 07127-93457-10 www.jehnert.de

Ihr Fachhändler:

Further products and detailed information, as well as our complete delivery program for passenger cars can be found on the internet at:



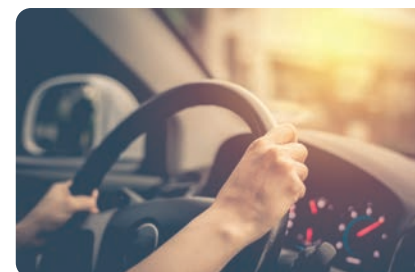
Share your Sound Experience  
with #JehnertSoundDesign



[facebook.com/jehnertsounddesign](https://facebook.com/jehnertsounddesign)



Suscribe us on Youtube



Feel free to visit our website:

Technical changes, as well as changes in shapes, sizes or colors reserved.