

SOUND EXPERIENCE WHILE TRAVELLING ...

**MOTORHOME SOUND SYSTEMS**

Status 01/24



TO THE PRODUCTS



**Concorde**  
REISEMOBILE AUS LEIDENSCHAFT



**MORELO**  
FIRST CLASS REISEMOBILE



## Sound system »Driver's cab«:

To optimise the sound characteristics in the mid-high range of the driver's cab, a high-quality mid-high range system is positioned in the A and B pillars above the dashboard. This special arrangement acoustically forms a so-called stereo triangle and ensures a wide-ranging sound stage and optimum dispersion.

and optimum sound dispersion. As the dashboard does not offer any installation options for loudspeakers at the factory, special loudspeaker mounts, so-called »mid/high-range modules« were developed.

The leather can be selected in black or cream beige to match the colour.

The extension with 165 mm woofers in the side panelling rounds off the frequency response downwards perfectly.

Speaker configuration:

2x 165 mm JEHNERT Power Woofer »XM165«

2x 80mm Midrange speaker »XE80«

2x 26 mm Neodymium soft dome tweeter »XE26A«

JEHNERT-Crossovers, Vehicle-specific calibration

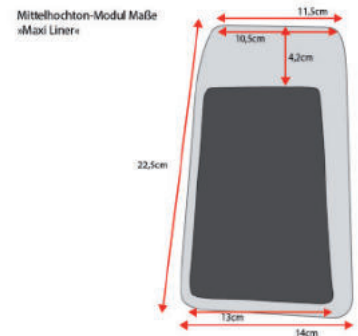
### Technical data:

Load capacity Duration / music: 2x 80 / 160 Watt

Transmission range: 49 - 22.000 Hz

Impedance: 4 Ohm

recomm. Amplifier power: ab 2 x 50 - 100 Watt @ 4 Ohm



Product description	Art.-No.	RRP incl. VAT /€
3-way sound system „cab“	65580	579,-

## Sound system »Living area«

In order to be able to enjoy excellent sound performance even when stationary, the cab system has been expanded to include two high-quality loudspeakers of your choice with a 2-way system. The best acoustic placement is in the seating area and the entrance area.

**Result:** The complete system achieves perfect spatiality - regardless of the listening position the listener is in.

Connection to the TV is of course possible if this has not already been done ex works.

### Living room boxes of your choice:

For the living room boxes, we recommend the Multibox »6600« or »7000«. The »7000« speaker is slightly smaller, but requires an additional subwoofer in any case. You can choose between 8 different colours to match your interior design.

The living room speakers are installed in the corner area of the kitchen partition wall and at the entrance to supplement the room sound. This creates a perfect surround sound. However, the position of the speakers can also vary during installation.

The colour and design are determined on site. You can choose between different colours to integrate the living area speakers into the colour scheme of your vehicle.

Loudspeaker system:	1x »XE26« / 1x »XE80«
Load capacity duration/ music:	50 / 100 Watt
Transmission range:	100 - 22.000 Hz
Impedance:	4 Ohm
Dimensions (L x B x T):	24 x 11,5 x 7,7 cm



*more examples on our website*

## Bass reflex subwoofer:

The extremely compact subwoofer with a 20 cm / 8" woofer with quad coil voice coil is mounted under the seating area. This ensures lively sound dynamics (no annoying vibration noises and booming bass!) and perfects the surround sound in the bass range. It precisely supports the fundamental range and optimises the system with powerful low bass. This subwoofer is the best example of how an intelligent interaction between amplifier and loudspeaker can provide rich bass pressure in a vehicle, even with extremely compact dimensions, thanks to sophisticated DSP technology. The secret lies in the meticulous coordination of the components - only in teamwork with the amplifier can this subwoofer achieve top sound performance.

### General data:

Power RMS / Max:	200 / 400 Watt
Efficiency:	87 dB 1W / 1m
Impedance:	4 x 3 Ohm
Linear diaphragm stroke:	+/- 6,5 mm



»17000«

Dimensions: 35 x 35 x 15,3 cm  
 Weight: 7,4 kg



»17005«

Dimensions: 31 x 23,5 x 19,3 cm  
 Weight: 5,6 kg



»17011«

Dimensions: 33,6 x 31,7 x 16,6 cm  
 Weight: 7,4 kg



## Digital 5-channel amplifier:

The digital 5-channel amplifier is extremely powerful and serves as a „turbo for the sound system“.

It has a dynamically controlled switching power supply, which reduces heat generation and power consumption to an absolute minimum. A special sound setup has been developed for „fine tuning“. However, each vehicle is completely calibrated and tuned again on site when the installation is completed - individually for your vehicle. Jack connection via radio / TV / smartphone or similar is also possible. The extension card slot allows the device to be expanded with additional interfaces such as Bluetooth® audio streaming or an AUX input.

Technical data	„High performance“ 5-channel amplifier
Load capacity Duration / music »Front & rear channels«	8x 55 / 110 Watt @4 Ohm
Load capacity Duration / music »Front & rear channels«	1x 280 / 560 Watt @2 Ohm
Stromverbrauch allgemein / theoretische Werte:	
• Hohe Lautstärke	20A / 240 Watt
• Mittlere Lautstärke	10A / 120 Watt
• Leise Lautstärke	3A / 36 Watt
Ruhestrom	< 1 mA
Unterspannungserkennung	9,6 V (max. 5 sec. down to 6 V)
Stromverbrauch im Power Save Modus	< 250 mA
Übertragungsbereich	20 - 22.000 Hz
Maße (H x B x T)	44 x 185 x 166 mm
Gewicht	1.840g



### Optional extension:

Each system is operated passively as standard. If more power is required, it is possible to expand the system with a 25 cm or 30 cm subwoofer (depending on the space available). The package includes a 20cm subwoofer as standard, which is installed in the seating area. For a 25cm subwoofer, dimensions of

36.5x35x29cm should be planned. For a 30cm subwoofer 40x40x34.5cm.

Alternatively, the entire front system can be actively driven by an additional amplifier for the subwoofer.

## AUX-In or Bluetooth® integrated in the amplifier

The AUX or Bluetooth® module expands the amplifier with a Bluetooth® audio streaming function or an AUX connection.

An AUX module is already integrated in the „High-Power“ version of the amplifier, but this must be configured. If both a connection via AUX and a Bluetooth connection via the „High-Power“ amplifier are required, it is possible to install the AUX module (64111-AUX jack) on the circuit board.

With both power variants, a Y-adaption 1x AUX for the TV, and an external Bluetooth module (art. no.: 68497) can be connected to the second AUX connection.



AUX activation „High-Power“ amplifier	64111-AUX-Klinke	50,-
AUX extension „Xcellent“ amplifier	11800-AUX-Klinke	99,-
Bluetooth module integrated in the „Xcellent“ amplifier	11087-BT	129,-

## Bluetooth® - Receiver

Transfer music applications from your smartphone or tablet to your hi-fi system. Especially for vehicles with 12 V on-board power supply. With the Bluetooth® receiver, music can be played directly on the hi-fi system / TV / radio. The Bluetooth® receiver allows music to be streamed directly from a Bluetooth®-enabled device and uses Bluetooth® 4.0 technology to establish a wireless connection between the device and any receiver with an AUX input without putting excessive strain on the battery. The connection is simply made via a 3.5 mm jack plug.

**Note:** The external Bluetooth module allows you to use the sound system without switching on the radio. When using 2x AUX sources, the Y adapter is required.



Bluetooth-Modul I for connection to amplifier (external)	68497	59,-
--	-------	------

## Amplifier in the bedroom

### AMP V40 CampTec 4-channel amplifier

#### The high-level 4-channel amplifier for radio, TV, smartphone and tablet

The compact and versatile JEHNERT® „Mini 4-channel amplifier“ Amp V40 CampTec, impresses with its new innovative technology, simple operation and the ability to change the desired music sources.

With a total output of 320 watts/2 ohms, a front and rear speaker system or a front system including subwoofer can be operated without any problems. Thanks to the very innovative and efficient technology, the existing power supply of the radio can also be used for the power amplifier. (No external power supply necessary).

The amplifier is also switched on in TV mode by means of signal detection (no additional remote switch required).

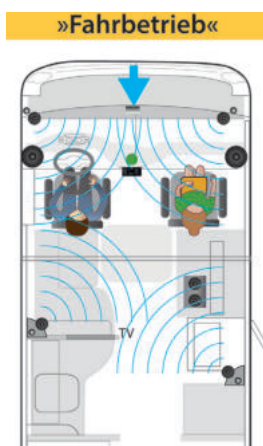


Technical data	»AMP V40 CampTec« 4-channel amplifier with 2x jack and 4x high/low level input
Operating voltage	10- 16 V
Output power at 14.4 V -RMS power @4/2 Ohm stereo	4x 40/80 Watt – @ 4 Ohm 4x 60/120 Watt –@ 2 Ohm
High-pass filter (HPF) Channel 1+2 infinitely variable	von 50 bis 4.000 Hz
High-pass filter (HPF) channel 3+4 infinitely variable	von 50-400 Hz
Low-pass filter (LPF) channel 3+4 infinitely variable	von 80 -2.500 Hz
Fuse	1x 15A
Dimensions (H x B x T)	45 x 162 x 80 mm
Weight	400g
Order no.	11306

- Radio connection: High-power input for automatic switch-on
- TV connection via AUX-In TV, Jack input 0.1-5V adjustable
- BT connection via BT AUX-IN, Jack input 0.1-5V adjustable
- 2x 3.5mm jack input - incl. 2m jack cable
- High-level / RCA input as well as cinch input with plug & play connections guaranteed to be latch-proof

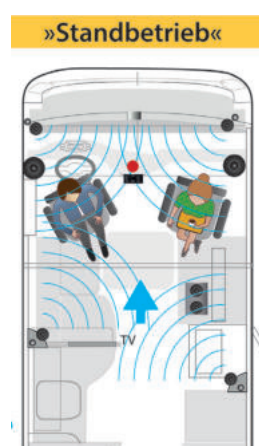
### Amplifier control for subwoofer control & setup switch (Art.-No. 68495)

The universal wired remote control allows you to control various functions such as the subwoofer intensity. The respective configuration options are programmed using special software. The remote control can be used to switch between two sound setups, for example. This has the great advantage that the sound can be set specifically for driving and stationary mode. To use the setup change, the amplifier must be specifically programmed.



Positioning and adjustment of the individual speakers to the driver's seat by means of a runtime correction.

The sound is mainly reproduced from the front.



Positioning and adjustment of the individual speakers on the driver's and passenger's seat passenger seat without runtime correction.

- Rear speakers become the front speakers
- Front speakers are connected to the rear speakers



Subwoofer controller & Setup-Switch	68495	39,-
-------------------------------------	-------	------

## Xcellent Power Pakett

For all hi-fi purists, the „power pack bundle“ is the ideal extension. This includes the powerful 9-channel 64-bit DSP amplifier including ACO processor. The AUX or Bluetooth module can of course be added as accessories. When choosing the amplifier, the subwoofer is supplied in a high-power 2 Ohm dual voice coil version as standard. Instead of the regular subwoofer control and setup switch, the Conductor can also be selected as an option, which offers various setting options.

The 8-channel DSP amplifier included as standard is replaced by a 9-channel 64-bit DSP amplifier including ACO processor in the power pack expansion set. It's not just the extra power that makes sound dreams come true, but also the addition of the subwoofer with 2 Ohm dual voice coil optimises the sound dynamics.

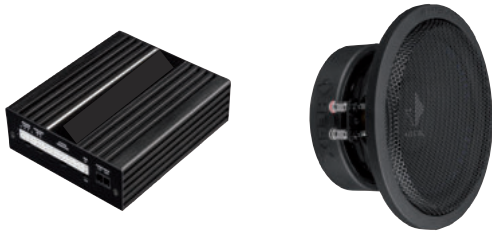
All high-power sound packages can be expanded with the power pack. These components are an upgrade of the amplifier and subwoofer version included in the sound packages.

### Technical data subwoofer:

Load capacity Duration / music: 300 / 600 Watt  
 Max. linear diaphragm stroke: +/- 8,0 mm  
 Impedance: 2 x 2 Ohm  
 Efficiency 1 W / 1 m: 86,0dB

### Technical data „ACO Processor DSP“

Load capacity duration / music „front & rear channels“	-Kanal A - F: 6x 65 Watt @4 Ohm -Kanal - Sub Out G-H: 2x 90 Watt @4 Ohm -2x 160 Watt @2 Ohm
Load capacity duration / music „front & rear channels“	
Quiescent current	< 1 mA
Undervoltage detection	9,6 V (max. 5 Sek. bis hinab zu 6 V)
Transmission range	10 Hz - 22.000 Hz
Dimensions (H x B x T)	46 x 130 x 153 mm
Order no. ACO Processor DSP:	11800



ACO processor DSP

200mm subwoofer with 2 Ohm dual voice coil

<b>Surcharge »Xcellent Power Package«</b> Amplifier incl. ACO processor and 2x2 Ohm subwoofer (Upgrade of components included in the sound package)	11800-99	190,-
---	----------	-------

## Setup switch for your personalised sound experience

The CONDUCTOR sound controller can be used to control and manage all the important functions of the (DSP) sound system - from volume control, signal source selection and setup changes to controlling the optional Bluetooth module.

Manage differently optimised sound profiles of your DSP for rock, pop, classical or absolutely pure and always enjoy your music with optimum sound quality. Thanks to its compact design, the CONDUCTOR can be integrated almost seamlessly into the existing vehicle interior and blends in unobtrusively with its appearance.

- Up to 4 volume menus configurable (master, digital, AUX, subwoofer, rear attenuation)
  - Selectable volume range (60 dB, 24 dB, 12 dB)
  - Selectable volume increments (1 dB steps, 0.5 dB steps)
  - Individual colour configurable for each volume menu
  - Intuitive control of the Bluetooth playback and pairing function (only for devices with optional Bluetooth Extension Card)
  - 12 x RGB LEDs for visual feedback
  - Configurable brightness and automatic dimming function
  - Flush installation with Ø 40mm hole cut-out
  - 5 m wiring harness - split in two for easy installation.
- No separate power supply required
- Fully updateable and configurable with the DSP PC tool
  - Up to 12 sound setups configurable



<b>Conductor</b> for controlling the DSP sound system	11025	119,-
---	-------	-------



## Sleeping area & rear seating group systems

### For TV and radio in the sleeping area

The sound packages for extending the living area with rear seating group or sleeping area include two living area speakers of your choice in both package variants.

living area speakers of your choice. Sound package 1 contains a mini 4-channel amplifier with 2x AUX connections.

Optionally, a subwoofer with 1x 165 mm dual voice coil can be added to extend the bass range.

Sound package 2 includes 2x multiboxes and a subwoofer of your choice, a digital 5-channel amplifier and a 5m stereo jack cable for connecting to TV, radio, smartphone or tablet. Thanks to their innovative design, the living room speakers harmoniously complement the cosy ambience. The energy-saving 5-channel amplifier with state-of-the-art 56-bit DSP technology and a subwoofer that can be selected in various sizes ensure impressive sound dynamics. Depending on your sound requirements, the system can be optionally expanded with two additional living room speakers to further perfect the spatial reproduction.

### Sound package 1

- 2 x Multibox of your choice: 6600, 6600-4K, 7000 or 7000-4K
- digital 4-channel amplifier AMP V40 CampTec
- incl. pre-installed vehicle-specific sound setup
- „plug & play“ connection cable for subwoofer and amplifier
- If no extra radio is installed in the sleeping area, the AUX input is required to connect the TV and radio. Optionally with jack splitter, so that a Bluetooth module can also be added (music playback without switching on the TV).



4-channel amplifier AMP V40

2x Multibox of your choice

Product description	Art.-No.	RRP
Sound package 1 without bass extension	69201-001	450,-
Sound package 1 with bass extension	69202-002	575,-
Optional accessories	Art.-No.	RRP
Interference suppression filter »plug & play« Prevents interference noise on TV or radio	68499	20,-

### Sound package 2

- 2 x Multibox of your choice: 6600, 6600-4K, 7000 or 7000-4K
- Subwoofer of your choice
- Digital high-power 5-channel amplifier
- incl. pre-installed vehicle-specific sound setup
- „plug & play“ connection cable for subwoofer and amplifier



5-channel DSP amplifier

Subwoofer of your choice

2x Multibox of your choice

- If no extra radio is installed in the sleeping area, the AUX connection is also required. Optionally with jack splitter, so that a Bluetooth module can also be added.

Product description	Art.-No.	RRP
Sound package 2 mit digitalem Hochleistungsverstärker	69202-82	1.314,-
Optional accessories	Art.-No.	RRP
Interference suppression filter »plug & play« Prevents interference noise on TV or radio	68499	20,-



## Integrated motorhomes »Liner class«

### Sound package 1 »Driver's cab«

#### Driver's cab:

- 3-way sound system (art. no. 60500)
- Subwoofer of your choice
- digital high power 5-channel amplifier
- incl. pre-installed vehicle-specific sound setup
- „plug & play“ connection cable for subwoofer and amplifier



3-way front system



5-channel DSP amplifier



Subwoofer of your choice

### Sound package 2

#### Driver's cab:

- Scope of delivery sound package 1

#### Living area:

- 2 x Multibox 6600, 6600-4K, 7000 or 7000-4K
- Colour of your choice



2x Multibox of your choice

Product description	Art.-No.	RRP
3-way cab system	60500	579,-
Sound package 1 with digital high-power amplifier »64111-TPG«	60501-86	1.474,-
Sound package 2 with digital high-power amplifier »64111-TPG«	60502-86	1.774,-

Optionales Zubehör	Art.-No.	RRP
<b>Insulation package</b> Integrated motorhome	27940	34,-
<b>Subwoofer controller &amp; Setup-Switch</b>	68495	39,-
<b>Bluetooth-Modul I</b> for connection to amplifier (external)	68497	59,-
<b>AUX input activation »High Power« Amplifier</b>	64111-AUX-Klinke	50,-
<b>Y-adapter</b> for TV & Bluetooth module	68496	9,-
<b>Interference suppression filter for TV</b>	68499	20,-
<b>Jack cable 7,5m</b> 3,5mm Stereo	84387	12,-
<b>Rocker switch / radio switch</b>	69499	5,-

Xcellent Power Package (Extension of subwoofer & amplifier power)	Art.-No.	RRP
<b>Surcharge »Xcellent Power Package«</b> Amplifier incl. ACO processor and 2x2 Ohm subwoofer (Upgrade of components included in the sound package)	11800-99	190,-
<b>Conductor</b> for controlling the DSP sound system	11025	119,-
<b>AUX extension</b> integrated in the „Xcellent“ amplifier	1800-AUX-Klinke	99,-
<b>Bluetooth-Modul</b> integrated in the „Xcellent“ amplifier	11087-BT	129,-
<b>Bluetooth-Audio-Streaming-Modul</b> optical	12304	159,-
<b>Optical digital audio cable</b> 0.5m Toslink cable	84386-5	16,-

Our team in Pliezhausen will be happy to help and advise you at any time:

### JEHNERT Sound Design

»Development and production of car audio systems«

