

**VW T6.1 California**

Front system

**Assembly instruction**

Status: 24.10.2023

**Art. No. 69420-82****JEHNERT**  
*Sound Design*  
A U T O M O T I V E**3-way cab system T6.1 California****Subwoofer for mounting under passenger seat and amplifier****Packing List:**

2x XE 26 - neodymium tweeter  $\varnothing$  26mm  
2x XE 80 - high-end midrange driver,  $\varnothing$  80mm  
1x midrange-tweeter module (right + left) VW T6.1, cover: imitation leather  
2x XM 165 - low-midrange driver „Power-Woofer“  $\varnothing$  165mm  
incl. adapter rings  
2x 3-way crossover VW T6.1 2-piece - part no. 65420  
1x digital 5-channel amplifier High Power incl. 2,2m connection cable  
1x Subwoofer 17022 incl. 1m connection cable  
2x Mounting template for A-pillar

**Mounting kit woofer**

8x M4 x 25 screws  
8x washer 4mm  
8x M4 polystop nuts  
16x raised countersunk head screws 3,9 x 16

**Mounting set midrange module**

8x M4 x 30 screws  
8x washer 4mm  
8x M4 polystop nuts

**Optional accessories:**

- Vehicle-specific radio connection cable for factory VW radio (glove box)
- Remote control to control the subwoofer and to control the sound setup
- Bluetooth function integrated in the amplifier
- Rocker switch

**Installation note:**

To avoid vibration noise, secure all wiring harnesses with insulating tape or similar.

**Radio Adjustment Notice:**

To achieve the best sound, all settings on the radio (bass, treble, loudness, etc.) should be set to zero or neutral.

**Warranty:**

As the manufacturer, we warrant these sound systems for 2 years from the date of purchase from the dealer. Within this warranty period, we will, at our option, repair or replace free of charge all defects that are based on material or manufacturing defects. Excluded from the warranty are damages caused by improper use or installation, wear and tear or interventions by third parties. The warranty does not cover consequential damage or defects that only insignificantly impair the value or usability of the sound systems. A warranty obligation is not triggered in the case of damage caused by external influences. Systems with additional or incorrect mounting holes are excluded from exchange. These are damages to the components that cannot be repaired.

## 1. Disassembly of the door panels

1.1. Lower the window pane completely.



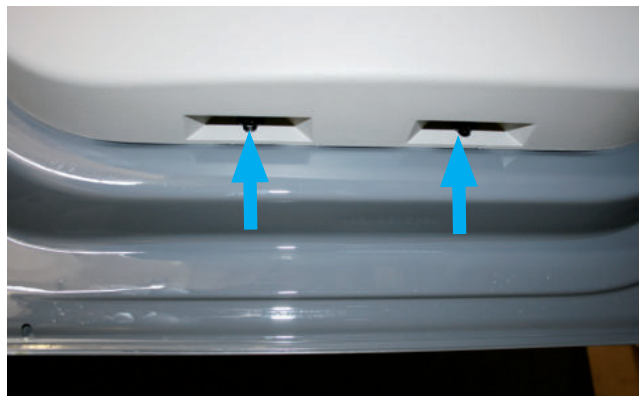
1.2. Unclip door handle



1.3. Switch unit, starting at the door lock switch, lever out (example illustration)



1.4. Remove the screw in the center of the door panel.



1.5. Lower edge of the door trim:  
Unscrew 2x plastic rivets

1.6. Starting from the bottom, unclip the door trim by pulling and lift upwards.  
(Clamping strip on the lower edge of the window is still attached).

1.7. Unclip the door release bowden cable - pull the cable sheathing on the opening lever by 1 cm - then unhook.

1.8. Disconnect the „alarm light, window regulator and mirror adjustment“ connector.



1.9. Disconnect original speaker terminal and remove factory woofer (drill out and remove fastening rivets)

->> make sure that the metal pieces do not fall into the inner area of the door.

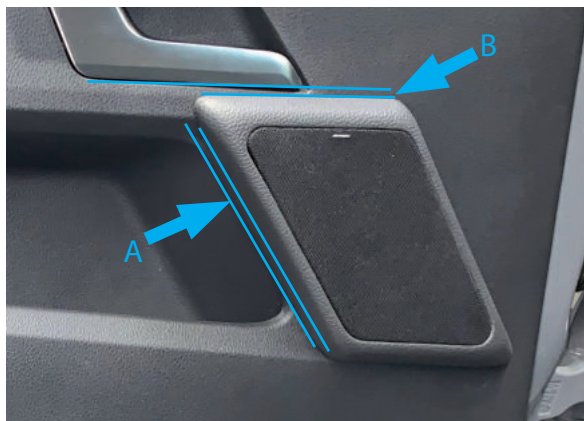
Tip: stick adhesive tape behind the rivets).

Alternatively, loosen the original screws and store them for later assembly.

## 2. Mounting mid-high module on the door panel

2.1. Place the door panel on a flat and padded work surface.

Tip: to protect the door trim against scratches, mask the area to be worked on all around with adhesive tape.

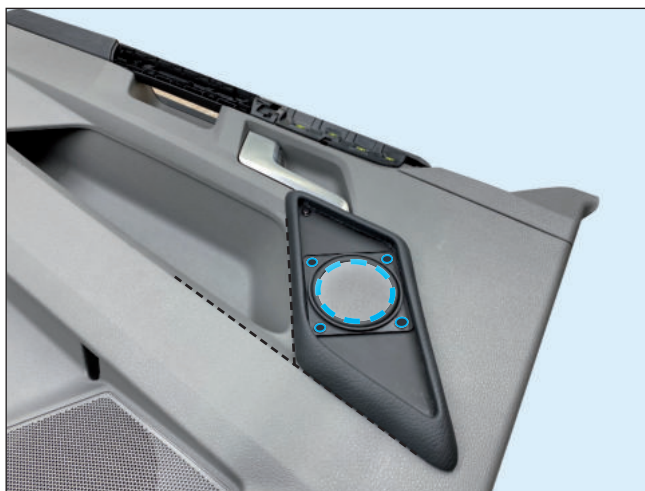


When aligning the mid-range module, make sure that there is still approx. 8mm space between the door handle and the module.

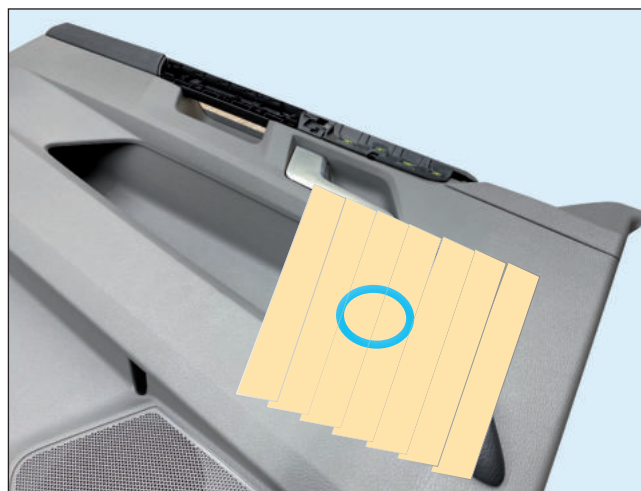
A gap of approx. 3mm should be left between the edge of the card tray and the module.

A = 3mm

B = 8mm

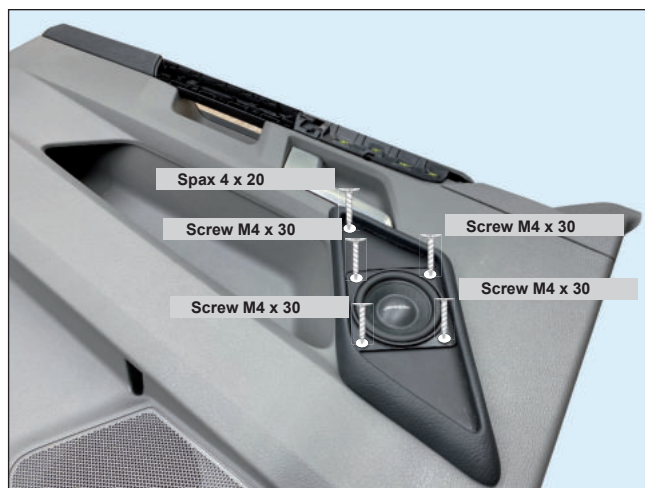


2.2. Align module without midrange speaker on door panel, as indicated in Fig.  
Mark speaker opening and screw positions.



2.3. For protection, mask the area around the marked speaker opening with masking tape and cut out with a hole saw. cut out.

-> Markings for screws must remain!!!



2.4. Mount the module incl. midrange speaker on the door panel with the supplied screws according to the illustration.



2.6. Finally, insert acoustic fabric panel flush

### 3. Woofer mounting - original installation location in the vehicle doors

To protect the woofer and adapter ring from water ingress, we recommend attaching a rain shield (see fig. A)



Cut plastic foil or Rainstop mat to the size of the mounting ring and make a small cut in the lower area (yellow marking) (woofer dismantled in illustration for clarity).



3.1 Fasten the mounting ring with 4x M4 x 25 screws, 4mm washers and M4 polystop nuts (Fig. B) and connect the JEHNERT speaker connector to the JEHNERT speaker (Fig. C).

3.2 Fasten the loudspeaker to the mounting ring with 8x 3.9 x 16 raised countersunk head screws and connect the original loudspeaker connector plug with the JEHNERT loudspeaker connector plug (Fig. D).

**CAUTION!!!** the cable connections of the woofer must not come into contact with the inner door panel --> insulate if necessary.

**To avoid vibration noise, secure all cable harnesses with insulating tape or similar.**

## 4. Insulation of vehicle doors and door panels

### Important recommendation:

The use of woofers in the door panel causes vibrations due to the oscillations of the bass, which can lead to rattling noises in the vehicle door:

Measures against vibration noise:

#### 4.1. insulation of the vehicle doors

- Cover the back of the door trim with insulating fleece (Order No. 27000) or foam material.  
or
- Stabilize rear side of door trim with stiffening compound (GRP fiber filler or similar).  
IMPORTANT: Make sure to leave the cut-outs for the door airbag and speakers free!
- Cover the \*backside of the door panel inside (=outer door skin) with self-adhesive bitumen mats / tar mats (see example below).
- by tapping the vehicle door, vibration noises of door mechanism parts (e.g. Bowden cables etc.) and localize cable harnesses and wrap them with foam / felt, foam rubber or similar.
- cut off protruding cable ties (rattling noises!)
- glue felt or foam under the original wiring harness

#### 4.2. insulation of the rear side of the door panel

- Apply insulation fleece (Order No. 27000) to the back of the door trim.  
or foam
- Stabilize the rear side of the door trim with stiffening compound (GRP fiber filler or similar).

**IMPORTANT: Make sure to leave the cut-outs for the door airbag and speakers free!**



**ATTENTION / Danger !!!**

**No insulating material behind side airbags**

**IMPORTANT:**

**No insulating material behind speakers and door releases. Leave out fastening clips**



*First insulation layer with alubutyl mats*



*Second insulation layer with insulation fleece mats*

## 5. Mounting the door panels on the vehicle doors

5.1. connect midrange speaker to crossover (step 3.2.) (red or marked cable =>).

(-> when installing a fully active system, the corresponding loudspeaker cable harness must be routed from the amplifier to the loudspeaker installation location).  
to the loudspeaker installation location)

5.2 Reconnect „alarm light, window regulator and mirror adjustment“ connector.

5.3 Hook the door trim into the top of the door shaft.

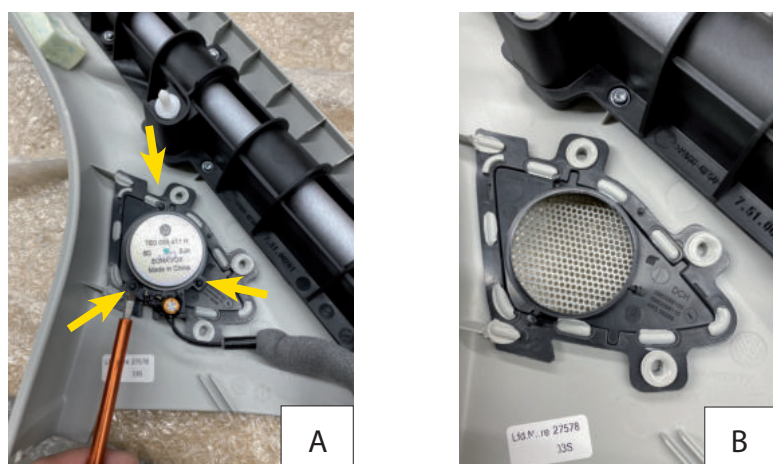
5.4 Reattach door trim in reverse order (tighten screws, install cover strip).



### Final check after door panel assembly:

Check all functions of controls such as seat adjustment, glove box opening, window regulator, etc.

## 6. Mounting the tweeters at the original installation position in the A-pillar



5.1. Use a tapered rasp (electric screwdriver or Dremel) to loosen the welded points of the original high tone grille incl. the mounting (Fig. A/B).



5.2 Install the tweeters as shown (Fig. C/D).

5.3. insert the plug of the tweeter cable into the corresponding socket of the vehicle tweeter connector.

5.4. install the A-pillar trim incl. the tweeter in reverse order to the steps.

5.5. Before installing the door panel, please check the locking of all door panel clips.  
Otherwise, the door panel will not fit properly.

5.6 Repeat the same installation steps only on the other side of the vehicle and finally install all removed vehicle parts such as door trim, A-frame, etc.  
vehicle parts such as door trim, A-pillar trim, etc.

**VW T6.1 California**

Front system

**Assembly instruction**

Status: 24.10.2023

**Art. No. 69420-82**

**JEHNERT**  
*Sound Design*  
A U T O M O T I V E

## Notes:

Our team in Pliezhausen will be happy to provide you with advice and assistance at any time:

JEHNERT Sound Design

„Development and production of car audio systems“.

Inh. Hans-Peter Jehnert

Im Michelreis 14

72124 Pliezhausen

Tel.: 07127-93457-0

Fax: 07127-93457-10

sounddesign@jehnert.de

www.jehnert.de

