

3-way cab system Fiat Ducato Series 7 and Series 8 (65580)

Model/year: Fiat Ducato Series 7 (Type 250) 2006-2021

Series 8 from YOM 2021



Packing list:

- 2x 26mm neodymium softdome tweeter „XE26“.
- 2x 80 mm midrange driver „XE80
- 2x 165 mm JEHNERT Power Woofer „XM165“ mounted to adapter ring
- 1x mounting set MHT module: 10x Spax 3,5, x 3,5
- 2x MHT crossovers wrapped in damping fleece



Benötigtes Werkzeug / Zubehör

- Phillips screwdriver
- Torx screwdriver TX25
- 10mm open-end wrench
- Gloves
- Plastic wedge
- Padding material for surface protection
- Tray, or similar for storing small parts
- Side cutter
- cordless screwdriver with 4mm drill bit and Phillips bit
- Insulating tape

Recommendation:

In order to achieve the full sound performance of the sound system, we recommend the expansion set, which, with its additional amplifier and subwoofer significantly increases the sound performance of the system.

Fiat Ducato Series 8: for an optimal sound experience, the complete insulation of the door lining is recommended. (required insulation material is not included in the scope of delivery, can be reordered, Art.No.: 27970)

Radio settings:

To achieve the best sound, all settings on the radio (bass, treble, loudness, equalizing, etc.) should be set to ZERO or OFF.

1. Mounting of the mid-high module on the dashboard (series 7)



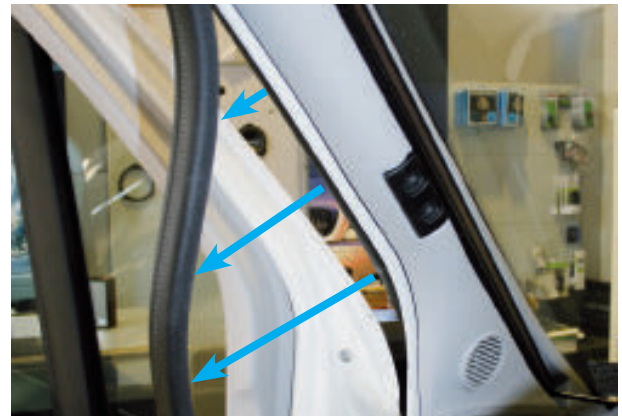
1.1 JEHNERT midrange driver
Remove from the module.



1.2 JEHNERT midrange module without loudspeakers on the dashboard. Align the dashboard:
Place the curvature of the module against the curvature of the dashboard and ensure that there is an even distance between them.



1.3 Mark the speaker cutout on the dashboard (white marker).



1.4 Loosen the rubber door seal in the area of the A-pillar.



1.5 Carefully lever out the A-pillars with the plastic wedge and remove them from the vehicle in twos.

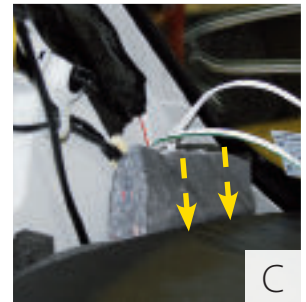
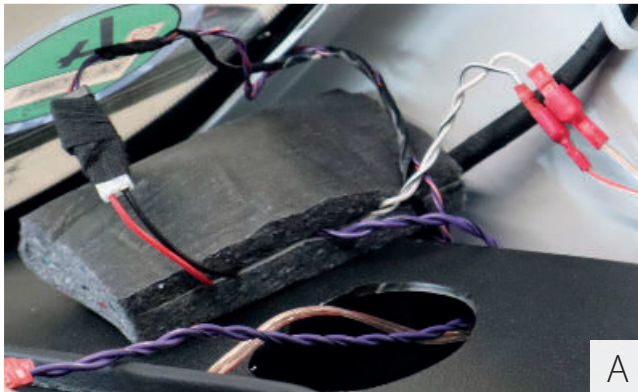


1.6 Heat the marked cutout well with a hot air dryer and cut out with a sharp cutter knife.

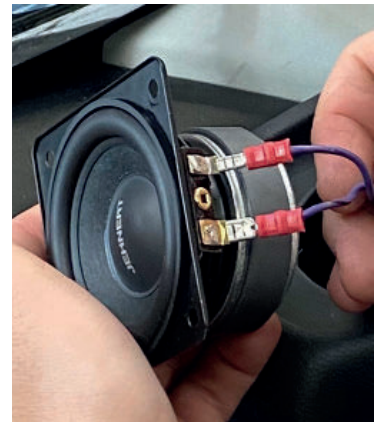


1. Mounting of the mid-high module on the dashboard (series 7)

1.7 Mounting the crossover



- Connect crossover with connection cable with original plug.
- Insert crossover together with damping material into the A-pillar (see fig. A+C) and pull the connection cable for the tweeter and midrange driver through the hole. (fig. B) --> tweeter connection marked/red = +
- Mount A-pillar again



- Screw the molded part to the dashboard for a precise fit.
- Connect the midrange speaker to the cable connection of the crossover and mount it to the molded part.



Press the acoustic fabric panel carefully and accurately onto the molded part.

2.a Woofer mounting in the vehicle door (Series 7)



2a.1. lever out the loudspeaker cover in the vehicle door from below, starting from the bottom (with plastic wedge).



2a.2 Dismantle the factory loudspeaker and disconnect the connection cable. The factory screws are used for fastening the JEHNERT low-frequency adapter.



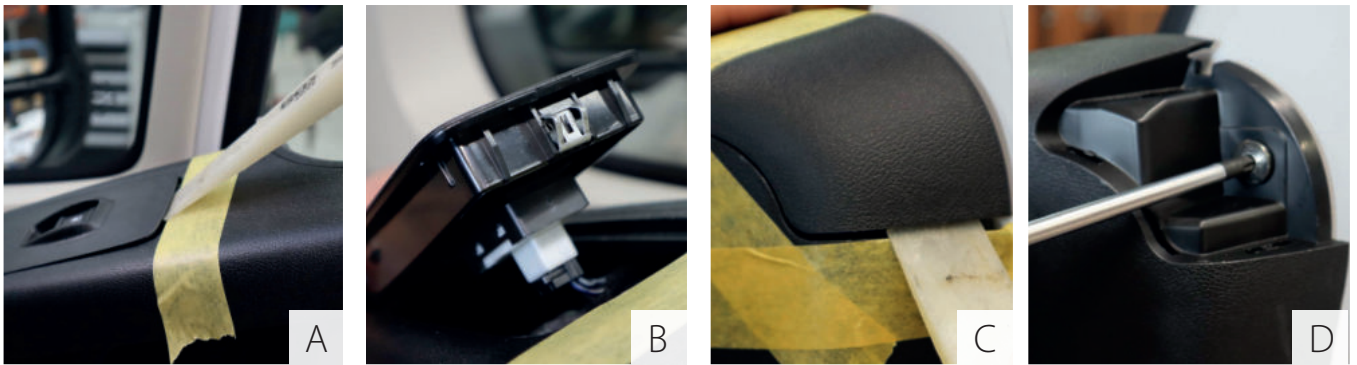
2a.3. run factory speaker cable between door panel and plastic trim behind the woofer opening (see fig. marked area).



2a.4. mount the woofer adapter with the factory screws.
Connect and mount JEHNERT woofer.
Put on the loudspeaker cover.

2.b Mounting the woofers (Series 8) **(at original woofer mounting position)**

2.b.1. Removal of the door panel

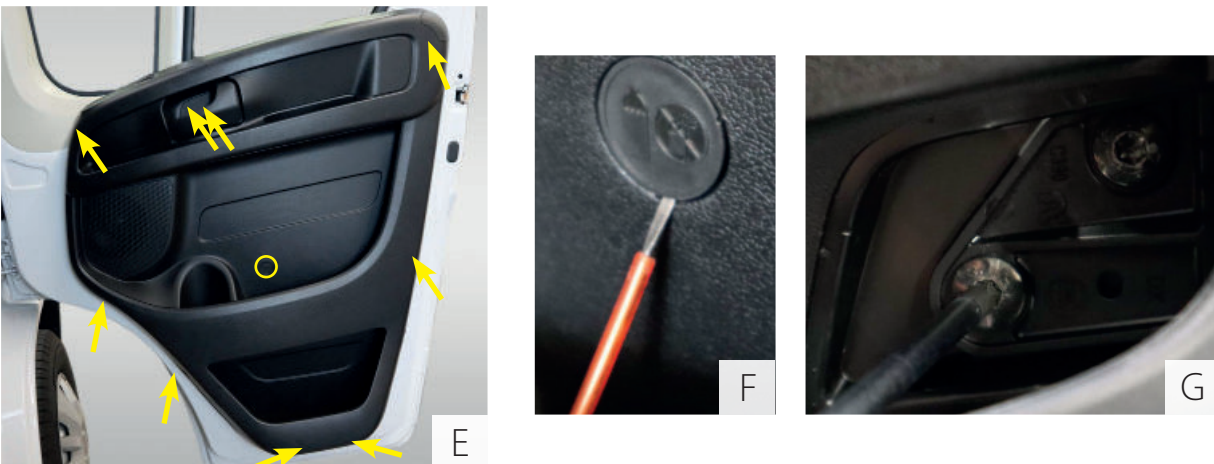


• Use a plastic wedge to carefully remove the door panel cover so that no scratches occur, secure the edges with adhesive tape. (Fig. A-C)

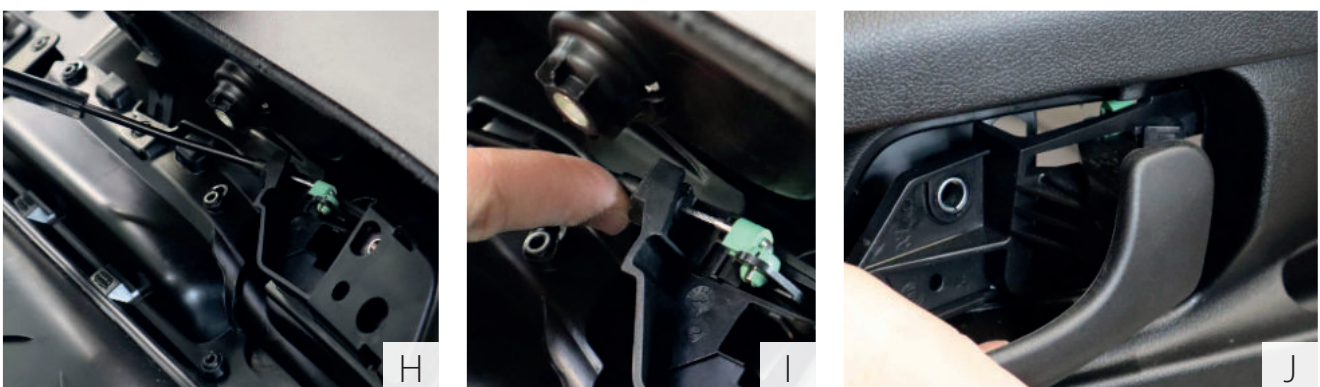
• Use a slotted screwdriver to remove the screws and covers of the door trim (Fig. D-J)

! remove all screws 8 x TX30 1x TX20 (Fig. E)

C: Finally, remove the two screws from the door handle and carefully remove the door trim. (Fig. G)



• Unclip door



D: Use your finger to pry out the door handle connection and remove the door handle. (Fig. I)

F: Now the woofer can be installed.

2. Mounting the woofer (at original woofer mounting position)


2. Mounting the woofer



- Disassemble all screws of the factory woofer (pick up screws) 3x TX20



- Using a TX20 screwdriver, install the three screws from the woofer ring to the vehicle door.
- Connect the cables together.
- Refit the door trim. (Attach screws)

Fiat Ducato Serie 7 /Serie 8 Cab system	Installation instructions Status: 19.02.2024 Art. No. 65580	
Notes:		
<hr/> <p> Warranty: As the manufacturer, we warrant these sound systems for 3 years from the date of purchase from the dealer. Within this warranty period, we will, at our option, repair or replace free of charge all defects that are due to material or manufacturing faults. Excluded from the warranty are damages caused by improper use or installation, wear and tear or interventions by third parties. The warranty does not cover consequential damage or defects that only insignificantly impair the value or usability of the sound systems. A warranty obligation is not triggered in the case of damage caused by external influences. Systems with additional or incorrect mounting holes are excluded from exchange. These are damages to the components that cannot be repaired. </p>		

Fiat Ducato Serie 7 /Serie 8
Cab system

Installation instructions

Status: 19.02.2024

Art. No. 65580

JEHNERT
Sound Design
A U T O M O T I V E

Notes:

If you have any questions, please do not hesitate to contact our team in Pliezhausen:

JEHNERT SOUND DESIGN

„Development and production of car audio systems“.

Inh. Hans-Peter Jehnert
Im Michelreis 14
72124 Pliezhausen
Tel.: 07127-93457-0
Fax: 07127 / 93457-10
sounddesign@jehnert.de
www.jehnert.de



Share your Sound Experience
with #JehnertSoundDesign



facebook.com/jehnertsounddesign



Subscribe us on Youtube

