

SOUND EXPERIENCE ON THE ROAD ...

FIAT DUCATO III (TYPE 250) AND SERIES 8



TO THE PRODUCTS

FIAT DUCATO III, Series 8 & Series 9



Sound and design perfectly integrated!



Fiat Ducato III and series 8

also suitable for Citroën Jumper / Peugeot Boxer

JEHNERT
Sound Design
AUTOMOTIVE



Fiat Ducato III
from YOM 2006 (Typ 250)



Fiat Ducato Serie 8
from YOM 2021



Fiat Ducato Serie 9
from YOM 2022

3-way Cab system

In acoustic fine-tuning, the vehicle-specific 3-way sound system provides a rich low-frequency foundation and achieves a powerful, lively sound image. High-quality 26mm soft-dome neodymium tweeters and 80mm high-end midrange drivers in the dashboard perfect the sound image with a very spatial and detailed stage image. The vehicle-specific mounting adapter allows the integration of a 165mm JEHNERT Power Woofer in the factory installation openings of the vehicle doors. The GRP mid-tweeter module for the dashboard is covered with high-quality artificial leather and is available in either gray or black.

To achieve the full sound performance of the sound system, we recommend Sound Package I, which significantly increases the sound performance of the system with the additional amplifier and subwoofer.

Speaker equipment:

2x 165 mm JEHNERT Power Woofer »XM165«
2x 80 mm midrange driver »XE 80«
2x 26 mm neodymium softdome tweeter »XE26«
JEHNERT crossovers, vehicle specific calibrated

Technical data:

Power handling continuous / music: 2x 80 / 160 watts
Frequency range: 49 - 22.000 Hz
impedance: 4 Ohm
rec. Amplifier power: from 2 x 50 - 100 watts @ 4 ohms



Product name	Art.-No.	RRP incl.VAT /€
3-way sound system „cab“	65580	549,-



Front system on the dashboard

Fiat Ducato III and series 8 Installation images



Mid-high module (without cover)



Mid-high module (with cover)



Woofer in the vehicle door (installation)



Door subwoofer series III



Cupholder series 7



MiKo subwoofer under cup holder



Door subwoofer series 8



Door subwoofer Ducato III with cupholder

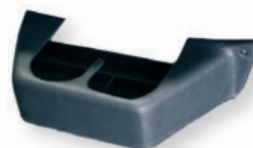
Cupholder »driver and passenger side« for Ducato III (type 250) from YOM 2006-2021

Exclusive cupholder for bottles up to 1.5 l - high-quality imitation leather cover with double decorative stitching - for mounting on the driver and passenger side (e.g. above the subwoofer system) - each also available separately - available in gray or black.



Cupholder
Driver's side

Order no. 61570 - Driver's side



Cupholder
Passenger side

Order no. 65560 - Passenger side

Cupholder „Driver's side“ / „Passenger's side	61570 / 65560	129,-
---	---------------	-------

The specific »door subwoofer« for Fiat Ducato III (Type 250) from YOM 2006-2021

The bass reflex subwoofer is installed in the driver's door to save space and perfectly rounds off the sound image in the lower frequency response. The completely enclosed subwoofer housing with side bass outlet replaces the driver's side lower map compartment and is mounted at its original attachment points.

The sound packages include the bass reflex subwoofer incl. 200 mm woofers „XE200“ as standard.
This is available with imitation leather cover as well as double decorative stitching and in black or gray.



Subwoofer rear »High-Power«

Power Duration/Music:	Standard: 1x 120 / 200 Watt @ 2 Ω High-Power: 1x 200 / 400 Watt @ 2 Ω
Impedance:	4x 2 Ω
Efficiency 1W/1m	90 dB

Subwoofer system „driver side“ incl. 200mm woofer	65510-Q-5	435,-
---	-----------	-------

The specific »door subwoofer« for Ducato Series 8 as of Bj. 2021

The bass reflex subwoofer, available with a 200mm quadcoil woofer, is also installed on the driver's door to save space. The sound packages include the bass reflex subwoofer incl. 200mm woofer as standard. This is available with a leatherette cover and double decorative stitching in black.



Power Duration/Music:	High-Power: 1x 200 / 400 Watt @ 2 Ω
Impedance:	4x 3 Ω
Efficiency 1W/1m	87 dB

High-power subwoofer „driver side“ incl. 1x 200mm woofer	65530-Q-5	435,-
--	-----------	-------

Center console subwoofer »MiKo« - individually suitable for all Fiat models

The bass reflex subwoofer incl. 1x165mm woofer with double voice coil is mounted under the cup holder in the center console of the Fiat Ducato (Attention: only suitable for models incl. cup holder (not suitable for models incl. map compartment in the center console). Available as GRP version incl. leather cover and decorative stitching (included in sound package) or as plastic version in leather look (included in CampTec package).

- Subwoofer MiKo incl. connection cable

These are passive subwoofers that require an amplifier for connection.



MiKo subwoofer below the beverage holder

Power Duration/Music:	1x 100 /200 Watt @ 2 Ω
Impedance: Efficiency 1W/1m	4x 2 Ω 90 dB

Subwoofer center console (GRP version) „MiKo“ incl. 1x165mm woofer	65520-S	415,-
--	---------	-------

Bass reflex subwoofer - individually suitable for all Fiat models

We always recommend a subwoofer for the complete sound system.

The task of a subwoofer is to support the low frequency range.

It is not about sound pressure and decibels, but rather about a clear, temperamental clear, spirited sound dynamics and perfection of the room sound.

Especially for recreational vehicles with limited space, the JEHNERT bass reflex subwoofers in various sizes.

Despite the small enclosure volume, they provide maximum sound quality.

All subwoofers are equipped with a 4.8 m »plug & play« connection cable and are powered by the digital 5-channel amplifier in a power-saving way.

Power Duration/Music:	1x 200 /400 Watt @ 2 Ω
Impedance: Efficiency 1W/1m	4x 3 Ω 87 dB

Instead of the variants for the driver's door or center console, of course, any other subwoofer can be chosen.

Ideal fit for Ducato in the
Seat console of the driver's seat.



»17014«

Dimensions: 38 x 28 x 16 cm
Weight: 7,3 kg



»17005«

Dimensions: 31 x 23,5 x 19,3 cm
Weight: 5,6 kg



»17011«

Dimensions: 33,6 x 31,7 x 16,6 cm
Weight: 7,4 kg

You can see more subwoofer variants and dimensions at the subwoofer overview.

Standard and high performance 5-channel amplifier

The digital 5-channel amplifier is extremely powerful and particularly versatile. It offers the possibility of finest frequency programming with broadband frequency compensation as well as the transfer of frequencies and runtime corrections. A specific setup has been developed for the Sprinter, which is pre-installed with every sound package.

The compact 5-channel amplifier has a dynamically controlled switching power supply, which reduces heat generation and power requirements to an absolute minimum. The amplifier is selectable in two power levels and offers the right power for every demand (optionally 160 watts or 300 watts subwoofer output).

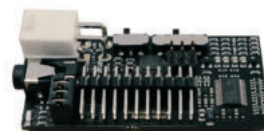


Technical data	Standard	High Power
Power Duration/Music:	4x 35 / 70 Watt @4 Ω 1x 160 / 320 Watt @2 Ω	8x 55 / 110 Watt @ 4 Ω 1 x 280/560 Watt @ 2 Ω
Quiescent current:	< 1mA	
Transmission range:	20-22.000 HZ	
Power consumption:		
High volume	15A / 240 Watt	20A / 240 Watt
Medium volume	8A / 120 Watt	10A / 120 Watt
Low volume	2A / 36 Watt	3A / 36 Watt
Dimensions(HxWxD):	44 x 185 x 139mm	44 x 185 x 166mm
Weight	1.580g	1.840g

AUX-In or Bluetooth® integrated in the amplifier

The AUX or Bluetooth® module expands the amplifier with a Bluetooth® audio streaming function or an AUX connection.

The „High-Power“ version of the amplifier already has an AUX module integrated, but this must be enabled. If both a connection via AUX and a Bluetooth connection via the „standard“ amplifier is desired, it is possible to install the AUX module (11062-AUX jack) on the PCB. With both performance variants, a Y-adaption 1x AUX for the TV, and at the second AUX connection an external Bluetooth module (Art.No.: 68497) can be connected.



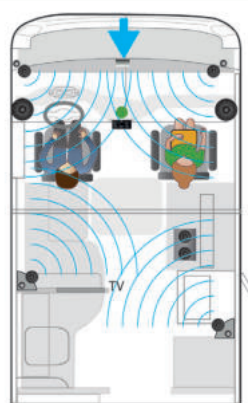
Designation	Item number
integrated BT module „Standard“	11062-BT
AUX input „Standard“	11062-AUX-Klinke
AUX activation „High-Power“	64111-AUX-Klinke

Amplifier control for subwoofer control & setup switch (Art.-No. 68495)

The universal wired remote control allows various functions such as subwoofer intensity. The respective configuration options are programmed with special software. The remote control can be used to switch between two sound setups, for example. This has the great advantage that the sound can be specifically adjusted for driving and stationary mode in each case.

To use the setup change, the amplifier must be specifically programmed.

Driving mode

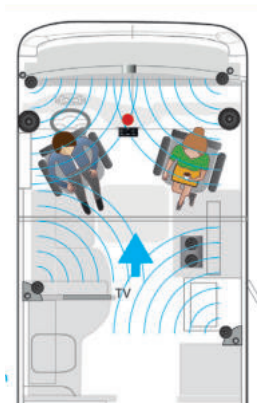


Positioning and adjustment of the individual loudspeakers by means of a time-of-flight correction to the driver's seat.

The sound reproduction is mainly from the front.



Standby



Positioning and adjustment of the individual loudspeakers to the driver and passenger seats without runtime correction.

- Rear speakers become the front speakers
- Front speakers become the rear speakers

Loudspeaker »Living area«

Two speakers are factory-installed in the rear area in the living area.

These factory installation locations are not used due to the unfavorable positioning.

In order to enjoy excellent sound performance even in standby mode, the cab system is expanded in the living area with two high-quality speaker boxes of your choice with a 2-way system. The acoustically best placement is the area in the seating area as well as the entrance area. (Included in sound package 1).

Result: The complete system achieves a perfect spatiality - no matter in which sitting position the listener is.

Living room boxes of your choice:

For the living room boxes we recommend the Multibox »6600« or »7000«.

For color matching to your interior, you can choose between 8 different imitation leather colors.



*Living room box 7000 living area »cream-white«
Corner mounting*



*Living room box 5500 living area »beige nature«
Corner mounting*



*Multibox PleX-Plade 6700 entrance area
Extremely flat mounting*

Bluetooth® - Receiver (Art.-No. 68497)

Transfer music applications from your smartphone or tablet to your hifi system. Especially for vehicles with 12 V electrical system. The Bluetooth® receiver allows music to be played directly on the HiFi system / TV / radio. The Bluetooth® receiver allows you to stream music directly from a Bluetooth-enabled device and, using Bluetooth® 4.0 technology, establishes a wireless connection between the device and any receiver with AUX input without overloading the battery. The connection is easily made via a 3.5 mm jack plug.

Notice: The external Bluetooth module offers the possibility to use the sound system without turning on the radio. When using 2x AUX sources, the Y-adapter is required.



Y-adapter with two AUX inputs (Art.-No. 68496)

In order to connect another AUX connection or external Bluetooth module to the digital amplifier in addition to the AUX connection (e.g. for TV connection) (see article Bluetooth receiver incl. 3.5mm jack connection), it is possible to use two AUX inputs with the Y adapter. Thus, 1x AUX can be used for the TV via Y-adaption and an external Bluetooth module (or other terminal device via jack) can be connected to the second AUX port.



Fiat Ducato III and series 8

also suitable for Citroën Jumper / Peugeot Boxer

Soundpackage 1

»Cab«

Cab:

- 3-way sound system (item no. 65580)
- subwoofer system of your choice
- digital 5-channel amplifier selectable in 2 power classes
- incl. pre-installed vehicle specific sound setup
- „plug & play“ connection cable for subwoofer and amplifier



3-way front system
Ducato III and series 8



5 channel amplifier



MiKo Subwoofer

Soundpackage 2

»Cab and living area«

Cab:

- Scope of delivery sound package 1

Living area

- 2 x Multibox 7000, 7000-4K, 6600 or 6600-4K color of your choice



2x Multibox at choice

			Ducato III	Serie 8 / Serie 9	
Product name			Art.-Nr.	Art.-Nr.	RRP incl. VAT / €
Without living space	SOUNDPACKAGE 1 incl. 1x 200mm Door subwoofer	• Sound package 1 incl. digital standard amplifier and high-power subwoofer	69071-62-Q	69081-62-Q	1.399,-
		• High-Power Sound Package 1 incl. digital high-performance amplifier and high-power subwoofer	69071-86-Q	69081-86-Q	1.564,-
	SOUNDPACKAGE 1 »MiKo« incl. 1x 165mm Woofer	• Sound package 1 incl. „plug & play“ subwoofer „MiKo“ and digital 5-channel amplifier	69081-62-MiKo		1.369,-
		• High-Power-Soundpackage 1 incl. digital high performance amplifier »plug & play«	69081-86-MiKo		1.534,-
	SOUNDPACKAGE 1 incl. Subwoofer of choice	• Soundpackage 1 incl. Subwoofer of your choice as well as digital 5-channel amplifier »plug & play«	69181-62		1.279,-
		• High-Power-Soundpackage 1 incl. digital high performance amplifier »plug & play«	69181-86		1.444,-
incl. living space	SOUNDPACKAGE 2 incl. 1x 200mm Door Subwoofer	• Soundpackage 2 incl. digital Standard amplifier as well as High-Power Subwoofer incl. 1x 200mm Woofer and 2x Multibox optional: 6600, 6600-4K, 7000, 7000-4K	69072-62-Q	69082-62-Q	1.699,-
		• High-Power-Soundpackage 2 incl. digital High power amplifier as well as High-Power Subwoofer and 2x Multibox optional: 6600, 6600-4K, 7000, 7000-4K	69072-86-Q	69082-86-Q	1.864,-
	SOUNDPACKAGE 2 »MiKo« incl. 1x 165mm Woofer	• Soundpackage 2 incl. »plug & play« Subwoofer »MiKo« as well as digital 5-channel amplifier and 2x Multibox optional: 6600, 6600-4K, 7000, 7000-4K	69082-62-MiKo		1.669,-
		• High-Power-Soundpackage 2 incl. digital high performance amplifier »plug & play«	69082-86-MiKo		1.834,-
	SOUNDPACKAGE 2 incl. Subwoofer of choice	• Soundpackage 2 incl. Subwoofer of your choice as well as digital 5-channel amplifier and 2x Multibox optional: 6600, 6600-4K, 7000, 7000-4K	69182-62		1.579,-
		• High-Power-Soundpackage 2 incl. digital high performance amplifier »plug & play«	69182-86		1.744,-

Optional accessories

»plug & play“ adapter for original FIAT radio (Ducato III)		11016	59,-
»plug & play“ adapter for original FIAT radio (series 8 & series 9)		11020-69583	59,-
Insulation for III (Type 250) / Series 8 & 9	2x Alubutyl, thickness 3mm (dimension: 50cm x 60cm)	27970	58,-
	2x expanding foam, thickness 5mm (dimension: 100cm x 50cm)		
Subwoofer control & setup switch		68495	39,-
Bluetooth Modul I for connection to amplifier (external)		68497	59,-
Bluetooth module integrated in amplifier for standard amplifier		11062-BT - Standard	129,-
AUX input „standard“ amplifier		11062-AUX-Klinke - Standard	99,-
Activation AUX input „High Power“ amplifier		64111-AUX-Klinke	50,-
Y-Adapter for TV & Bluetooth module		68496	9,-
Rocker switch / radio switch		69499	5,-