

VW Bus T5 / T6 / T 6.1 / T6.1 California Beach

VW Crafter

Travelling and doing without anything...

... **SOUND EXPERIENCE**
in a VW bus!



TO THE PRODUCTS





TO THE PRODUCTS

VW Bus T5

3-way cab system

Customised speaker mounts on the A-pillars, each with a midrange driver and soft-dome neodymium tweeter to create a wide and spacious sound stage.

In the vehicle doors, depending on the desired performance, two 165 mm power woofers or extremely flat and lightweight 200 mm flat woofers are used (mounting adapter included).

The acoustically calibrated crossovers optimise the sound system with a detailed sound image and spirited sound dynamics.

Choice of colour: anthracite or light grey.



Speaker configuration:

2x 165 mm JEHNERT Power Woofer „XM165“

2x 55 mm „XE55“ midrange drivers

2x 19 mm neodymium soft dome tweeter „XE19“

JEHNERT crossovers, vehicle-specific calibrated

Technical data:

Power handling continuous / music: 2x 70 / 140 watts

Frequency response: 49 - 22,000 Hz

Impedance: 4 Ohm

recomm. Amplifier power: from 2 x 50 - 100 Watt @ 4 Ohm



Mid-high module in the A-pillar

Sound package 1 »Driver's cab« T5

Driver's cab:

- 3-way sound system (art. no. 65600)
- Subwoofer of your choice
(item no. 17022 - ideal for space-saving installation under the front passenger seat)
- Digital 5-channel amplifier
- incl. pre-installed VW sound setup
- „plug & play“ connection cable for subwoofer and amplifier



5-channel DSP amplifier



Bass reflex subwoofer



3-way front system incl. 165 mm woofer for vehicle doors

Product description	Art.-No.	Colour	RRP
3-way cab system T5 165 mm power woofer	65600	anthracite / light grey	549,-
Sound package 1 with digital high-power amplifier	69100-82	anthracite / light grey	1.444,-
Optional accessories	Art.-No.		RRP
Amplifier controller for subwoofer control	68495		39,-
»plug & play«-Adapter for original VW T5 radio	11088		39,-
Insulation for VW	27980		84,-



TO THE PRODUCTS

JEHNERT
Sound Design
AUTOMOTIVE

VW Bus T6

3-way cab system

In a precisely tuned listening position, an 80 mm midrange driver and 26 mm tweeter in vehicle-specific mid/high modules on the A-pillars create a perfect sound stage.

For a powerful low-frequency range, the factory-fitted installation location of the vehicle doors a 165mm JEHNERT power woofer in each door. The woofers are installed with a precisely mounting adapter directly into the factory installation openings.



Mid-high module in the A-pillar

To achieve the full sound performance of the sound system, we recommend the sound package 1, which significantly increases the sound performance of the system with the additional amplifier and subwoofer.

Speaker configuration:

2x 165 mm JEHNERT Power Woofer „XM165“

2x 80 mm „XE80“ midrange drivers

2x 26 mm neodymium soft dome tweeter „XE26“

JEHNERT crossovers, vehicle-specific calibrated

Technical data:

Power handling continuous / music: 2x 70 / 140 watts

Frequency response: 49 - 22,000 Hz

Impedance: 4 Ohm

recomm. Amplifier power: from 2 x 50 - 100 Watt @ 4 Ohm

Sound package 1 »Driver's cab« T6

Driver's cab:

- 3-way sound system (art. no. 69400)
- Subwoofer of your choice
(item no. 17022 - ideal for space-saving installation under the passenger seat)
- Digital 5-channel amplifier
- incl. pre-installed VW sound setup
- „plug & play“ connection cable for subwoofer and amplifier



5-channel DSP amplifier



Bass reflex subwoofer



3-way front system incl. 165 mm woofer for vehicle doors

Product description	Art.-No.	Colour	RRP
3-way cab system T6	65400	anthracite / light grey	549,-
Sound package 1 with digital high-power amplifier	69400-82	anthracite / light grey	1.444,-

Optional accessories	Art.-No.	RRP
Amplifier controller for subwoofer control	68495	39,-
»plug & play«-Adapter for original VW radio T6 /T6.1 / Crafter	11092	46,-
Insulation for VW	27980	84,-



TO THE PRODUCTS
T6.1



TO THE PRODUCTS
T6.1 CALIFORNIA

VW Bus T6

VW T6 Doorboard with quadruple bass system

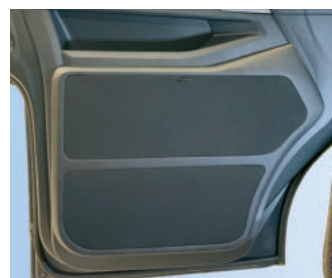
The doorboards are equipped with a full eight 165mm woofers and specially angled 100mm midrange drivers. Two 26mm soft-dome neodymium tweeters complete the 3-way system in the factory-fitted installation openings of the A-pillars. Precise acoustic arrangement and crossovers calibrated specifically for the vehicle perfect the highs, mids and lows and promise impressive sound dynamics for music enjoyment at the highest level. Optionally, the doorboards can be combined with the mid-high modules to achieve maximum sound volume.

Speaker configuration:

8x 165 mm JEHNERT „XM165“ power woofers
2x 100 mm high-end midrange driver „XM110“
2x 26 mm neodymium soft dome tweeter „XE26“
JEHNERT crossovers, vehicle-specific calibrated

Technical data:

Power handling continuous / music: 2x 300 / 500 watts
Frequency response: 49 - 22,000 Hz
Impedance: 4 Ohm
recomm. Amplifier power: from 2 x 200 - 300 Watt @ 4 Ohm



Doorboard with quadruple bass system,
VW T6

VW T6

Product description	Art.-No.	RRP
Doorboard incl. quadruple bass system for VW T6	75011	1.249,-
Doorboard incl. quadruple bass system and mid/high system on the A-pillar for VW T6	75011-65400	1.549,-

VW Bus T6.1 and T6.1 California Beach

3-way cab system

The 3-way sound system consisting of two soft-dome neodymium tweeters, high-end mid-range speakers, JEHNERT power woofers and vehicle-specific crossovers optimise the sound experience in the T6.1.

The specially developed mid-high modules in the A-pillars provide a perfect sound stage. For the T6.1 California (models incl. blackout blind), the tweeters are installed in the factory-fitted location of the A-pillar and the mid-range module in the vehicle doors. The woofers in the factory-fitted installation locations ensure a spirited sound reproduction. Choice of colour: anthracite or light grey

Speaker configuration:

2x 165 mm JEHNERT Power Woofer „XM165“
2x 80 mm „XE80“ midrange drivers
2x 26 mm neodymium soft dome tweeter „XE26“
JEHNERT crossovers, vehicle-specific calibrated

Technical data:

Power handling continuous / music: 2x 70 / 140 watts
Frequency response: 49 - 22,000 Hz
Impedance: 4 Ohm
recomm. Amplifier power: from 2 x 50 - 100 Watt @ 4 Ohm



Mid-high module in the driver's side
A-pillar



Mid-range module in the door panelling
for models with
blackout blind

Sound package 1 »Driver's cab« T6.1 and T6.1. California Beach

Driver's cab:

- 3-way sound system (art. no. 65410 /65420)
- Subwoofer of your choice
(item no. 17022 - ideal for space-saving installation under the front passenger seat)
- Digital 5-channel amplifier
- incl. pre-installed VW sound setup
- „plug & play“ connection cable for subwoofer and amplifier



5-channel DSP amplifier



Bass reflex subwoofer



T6.1 3-way front system incl. 165 mm woofer for vehicle doors



Mid-high module optionally available in black



T6.1 California 3-way front system incl. 165 mm woofer for vehicle doors

Optional extension:

Each system is operated passively as standard. If more power is required, it is possible to expand the system with a 25 cm or 30 cm subwoofer (depending on the space available). The package includes a 20cm subwoofer as standard, which is installed in the seating area. Dimensions of 36.5 x 35 x 29 cm should be planned for a 25 cm subwoofer. For a 30cm subwoofer 40 x 40 x 34.5 cm. Alternatively, an additional amplifier for the subwoofer can be used to actively drive the entire front system.

	T6.1	T6.1 California		
Product description	Art.-No.		Colour	RRP
3-way cab system T6.1	65410	65420	anthracite / light grey	549,-
Sound package 1 with digital high-power amplifier	69410-82	69420-82	anthracite / light grey	1.444,-

Optional accessories	Art.-No.		RRP
Amplifier controller for subwoofer control	68495		39,-
»plug & play«-Adapter für orig. VW Radio T6/ T6.1/ Crafter	11092		46,-
Insulation for VW	27980		84,-



TO THE PRODUCTS

2-way front system plug & play for T6 & T6.1

The 2-way sound system for the cab guarantees high quality and first-class listening pleasure. Custom-fit 26 mm high-end tweeters and 165 mm paper cone woofers provide an absolute sound upgrade in the VW T6/T6.1.

The original installation slots and original VW plugs are used for simple installation. The 2-way system is compatible with the VW blackout system in the VW T6/T6.1 California Beach and can be upgraded with a powerful subwoofer and a 5-channel DSP amplifier.

Speaker configuration:

2x 165 mm JEHNERT Power Woofer „XA165“
2x 19 mm neodymium soft dome tweeter „XA 19VW“
JEHNERT crossovers, vehicle-specific calibrated

Technical data:

Power handling continuous / music: 2x 70 / 140 watts
Frequency response: 49 - 22,000 Hz
Impedance: 4 Ohm
recomm. Amplifier power from: 2 x 50 - 100 Watt @ 4 Ohm



Driver's cab:

- 2-way sound system (VW T6 art. no. 65450, VW T6.1 art. no. 65460)
- Subwoofer of your choice
- digital 5-channel amplifier
- incl. pre-installed VW sound setup
- „plug & play“ connection cable for subwoofer and amplifier



5-channel DSP amplifier



Subwoofer of your choice



2-way front system

	VW T6	VW T6.1	RRP
2-way cab system	available from our sales partner Reimo		
Soundpaket 1 <ul style="list-style-type: none">- 2-way sound system „Driver's cab“ 65450 / 65460- „plug & play“ subwoofer of your choice- digital high-power amplifier „plug & play“	69220-86	69230-86	1.149,-
Optional accessories	Art.-No.	RRP	
Amplifier controller for subwoofer control	68495	39,-	
„plug & play“ adapter for original VW radio T6/ T6.1	11092	46,-	
Insulation for VW	27980	84,-	

VW Crafter

3-way cab system

The speaker mounts developed for the Crafter dashboard integrates two 100mm mid-range speakers and two 26 mm soft-dome neodymium tweeters in an acoustically optimised listening position. A 165 mm JEHNERT power woofer in the factory-fitted location of the vehicle doors ensures greatly improved basic sound reproduction and higher overall sound pressure. The Crafter sound system is specially calibrated for vehicle acoustics. This guarantees an optimised sound image and detailed music reproduction.



Speaker configuration:

2x 165 mm JEHNERT Power Woofer „XM165“
2x 100 mm „XE100“ midrange drivers
2x 26 mm neodymium soft dome tweeter „XE26“
JEHNERT crossovers, vehicle-specifically calibrated

Technical data:

Power handling continuous / music: 2x 80 / 160 watts
Frequency response: 49 - 22,000 Hz
Impedance: 4 Ohm
recomm. Amplifier power: from 2 x 50 - 100 Watt @ 4 Ohm



Mid-high module (without cover)



Mid-high module (incl. cover)



Woofers installed in factory mounting locations

Sound package 1 »Driver's cab«

Driver's cab:

- 3-way sound system (art. no. 65100)
- Subwoofer of your choice
- digital high-power 5-channel amplifier (item no. 64111-TPG)
- incl. pre-installed vehicle-specific sound setup
- „plug & play“ connection cable for subwoofer and amplifier



3-way front system



5-channel DSP amplifier



Subwoofer of your choice

Sound package 2

Driver's cab:

- Scope of delivery sound package 1

Living area:

- 2 x Multiboxes 6600, 6600-4K, 7000 or 7000-4K

Colour of your choice



2x Multiboxes of your choice

Produktbeschreibung	Art. -No.	Colour	RRP
3-way cab system	65100	anthracite	549,-
Sound package 1 with digital high-power amplifier „64111-TPG“	69101-86	anthracite	1.444,-
Sound package 2 with digital high-power amplifier „64111-TPG“	69102-86	anthracite	1.744,-

Optional accessories (available for both sound packages):

Amplifier controller for controlling the subwoofer	68495	-	39,-
„plug & play“ adapter for original VW radio	11092	-	46,-



TO THE PRODUCTS

VW Bus T5, T6, T6.1/VW Crafter

2-way and 3-way rear system

2- or 3-way rear system

The 3-way rear system consisting of mid-high modules for the C-pillar and 165 mm power woofers in the original installation locations completes the sound experience in the van.
in the side panelling completes the sound experience in the van.

Note: 3-way system only suitable for vehicles without furniture extension

Speaker configuration (3-way variant):

2x 165 mm JEHNERT „XM165“ woofer
2x 55 mm neodymium midrange driver „XE55“
2x 26 mm neodymium soft dome tweeter „XE26“
JEHNERT crossovers, vehicle-specific calibrated

Dimensions (LxBxHxT): 14,5cmx 73cmx 20cmx10mm

2-way rear system	Art.-No. 67202	RRP 359,-
3-way rear system	Art.-No. 67200	RRP 448,-



Mid-high module in the C-pillar



Grand California Rear System 2-way system »Sleeping area«

The optional 2-way rear system completes the 3-way cab system with perfect surround sound. The rear system is integrated above the rear bed.

Speaker configuration:

2x XF130 high-end midrange drivers
2x 26 mm neodymium soft dome tweeter „XE26“
JEHNERT crossovers,
calibrated for specific vehicles



2-way rear system VW Crafter



Speakers above the rear bed

Product description	Art. -No.	RRP
2-way rear system for sleeping area, VW Grand California/Crafter	67430	549,-

Digital 5-channel amplifier

The digital 5-channel amplifier is extremely powerful and particularly versatile. It offers the possibility of the finest frequency programming with broadband frequency compensation as well as the transfer of frequencies and delay time corrections. The amplifier is equipped with a dynamically regulated switching power supply, which minimises heat generation and power consumption.

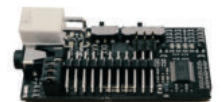


Technical data	High-Power
Power Duration/Music:	8x 55 / 110 Watt @ 4 Ω 1 x 280/560 Watt @ 2 Ω
Quiescent current:	< 1mA
Transmission range:	20-22.000 HZ
Power consumption:	
High volume	20A / 240 Watt
Medium volume	10A / 120 Watt
Quiet volume	3A / 36 Watt
Dimensions(HxBxT):	44 x 185 x 166mm
Weight	1.840g

AUX-In or Bluetooth® integrated in the amplifier

The AUX or Bluetooth® module expands the amplifier with a Bluetooth® audio streaming function or an AUX connection.

An AUX module is already integrated in the „High-Power“ version of the amplifier, but this must be configured. If both a connection via AUX and a Bluetooth connection via the „High-Power“ amplifier are required, it is possible to install the AUX module (64111-AUX jack) on the circuit board. With both power variants, a Y-adaption 1x AUX for the TV, and an external Bluetooth module (art. no.: 68497) can be connected to the second AUX connection.



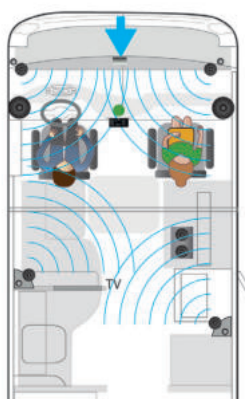
AUX activation „High-Power“ amplifier	64111-AUX-Klinke	50,-
AUX extension „Xcellent“ amplifier	11800-AUX-Klinke	99,-
Bluetooth-Module integrated in the „Xcellent“ amplifier	11087-BT	129,-

Amplifier control for subwoofer control & setup switch

The universal cable remote control makes it possible to control various functions such as the subwoofer intensity. The respective configuration options are programmed using special software. The remote control can be used to switch between two sound setups, for example. This has the great advantage that the sound can be specifically adjusted for driving and stationary operation.

To use the setup change, the amplifier must be specifically programmed.

»Driving operation«

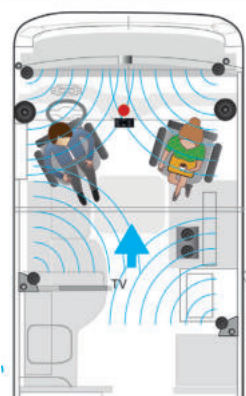


Positioning and adjustment of the individual speakers to the driver's seat by means of a runtime correction.

The sound is mainly reproduced from the front.



»Standby mode«



Positioning and adjustment of the individual speakers on the driver's and passenger's seat passenger seat without runtime correction.

- Rear speakers become the front speakers
- Front speakers become the rear speakers

Subwoofer control & setup switch	68495	39,-
----------------------------------	-------	------

Xcellent Power Package

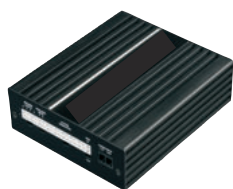
For all hi-fi purists, the „power pack bundle“ is the ideal extension. This includes the powerful 9-channel 64-bit DSP amplifier including ACO processor. The AUX or Bluetooth module can of course be added as accessories. When selecting the amplifier, the subwoofer is supplied in a high-power 2 Ohm dual voice coil version as standard. Instead of the regular subwoofer control and setup switch, the Conductor can also be selected as an option, which offers various setting options.

The 8-channel DSP amplifier included as standard is replaced by a 9-channel 64-bit DSP amplifier including ACO processor in the power pack expansion set. It's not just the extra power that makes sound dreams come true, but also the addition of the subwoofer with 2 Ohm dual voice coil optimises the sound dynamics.

All high-power sound packages can be expanded with the power pack. These components are an upgrade of the amplifier and subwoofer version included in the sound packages.

Technical data subwoofer:

Load capacity Duration / music:	300 / 600 Watt
Max. linear diaphragm stroke:	+/- 8,0 mm
Impedance:	2 x 2 Ohm
Efficiency 1 W / 1 m:	86,0dB



Technical data »ACO-Processor DSP"

Load capacity Duration / music »Front & rear channels«	-Channel A - F: 6x 65 Watt @4 Ohm - Sub Out G-H: 2x 90 Watt @4 Ohm -2x 160 Watt @2 Ohm
Quiescent current	< 1 mA
Undervoltage detection	9.6 V (max. 5 sec. down to 6 V)
Transmission range	10 Hz - 22.000 Hz
Dimensions (H x B x T)	46 x 130 x 153 mm
Order no. ACO Processor DSP:	11800

ACO processor DSP

200mm subwoofer with 2 Ohm dual voice coil

Surcharge »Xcellent Power Package« Amplifier incl. ACO processor and 2x2 Ohm subwoofer (Upgrade of components included in the sound package)	11800-99	190,-
---	----------	-------

Setup switch for your personalised sound experience

The CONDUCTOR sound controller can be used to control and manage all the important functions of the (DSP) sound system - from volume control, signal source selection and setup changes to controlling the optional Bluetooth module.

Manage differently optimised sound profiles of your DSP for rock, pop, classical or absolutely pure and always enjoy your music with optimum sound quality. Thanks to its compact design, the CONDUCTOR can be integrated almost seamlessly into the existing vehicle interior and blends in unobtrusively with its appearance.

- Up to 4 volume menus configurable (master, digital, AUX, subwoofer, rear attenuation)
- Selectable volume range (60 dB, 24 dB, 12 dB)
- Selectable volume increments (1 dB steps, 0.5 dB steps)
- Individual colour configurable for each volume menu
- Intuitive control of the Bluetooth playback and pairing function (only for devices with optional Bluetooth Extension Card)
- 12 x RGB LEDs for visual feedback
- Configurable brightness and automatic dimming function
- Flush installation with Ø 40mm hole cut-out
- 5 m wiring harness - split in two for easy installation.
- No separate power supply required
- Fully updateable and configurable with the DSP PC tool
- Up to 12 sound setups configurable



Conductor for controlling the DSP sound system	11025	119,-
---	-------	-------

Bluetooth® - Receiver

Transfer music applications from your smartphone or tablet to your hi-fi system.

Especially for vehicles with 12 V on-board power supply. With the Bluetooth® receiver, music can be played directly on the hi-fi system / TV / radio. The Bluetooth® receiver allows music to be streamed directly from a Bluetooth®-enabled device and uses Bluetooth® 4.0 technology to establish a wireless connection between the device and any receiver with an AUX input without putting excessive strain on the battery. The connection is simply made via a 3.5 mm jack plug.



Note: The external Bluetooth module allows you to use the sound system without switching on the radio. When using 2x AUX sources, the Y adapter is required.

Bluetooth Module I for connection to amplifier (external)	68497	59,-
---	-------	------



Y-adapter for two AUX inputs

To connect a further AUX connection or external Bluetooth module to the digital amplifier in addition to the AUX connection (e.g. for TV connection) (see article Bluetooth receiver incl. 3.5 mm jack connection), it is possible to use two AUX inputs with the Y adapter. This means that 1x AUX can be used for the TV via the Y adapter and an external Bluetooth module (or other terminal device via jack) can be connected to the second AUX connection.

Y-adapter for TV & Bluetooth module	68496	9,-
-------------------------------------	-------	-----

Rocker switch

The rocker switch is used to use the sound system via AUX or Bluetooth®.

The sound system is controlled via AUX or Bluetooth® without switching on the radio.



Rocker switch / radio switch	69499	119,-
------------------------------	-------	-------



Interference suppression filter

The interference suppression filter with 3.5 mm jack connection filters out interference noises (humming, crackling, whistling) that can be caused by the vehicle's electrical systems. The filter is connected „plug & play“ between the audio source (TV or radio) and the amplifier. The interference suppression filter prevents most of the noise occurring in the vehicle.

- Eliminates interference noise, ground hum loops, earthing problems
- Frequency: 2 - 20,000 Hz
- Connection via 3.5 mm jack
- No power supply required

Recommendation: The highest efficiency is achieved if the interference suppression filter is installed as close as possible to the output stage.

Interference suppression filter	68499	20,-
---------------------------------	-------	------

Jack cable 7,5m

The jack cable is used, for example, to optimise the connection between the TV set and radio or amplifier and smartphone or other end devices via a jack.

- Metal plug incl. flexible premium cable
- 3.5mm jack plug to 3.5mm jack plug
- Gold-plated plug contacts
- precisely fitting plugs for a perfect connection of audio components



Jack cable 7,5m	84387	12,-
-----------------	-------	------

Optional accessories		Art.-No.	RRP
„plug & play“ adapter for original VW T6 / T6.1 / Crafter radio		11092	46,-
Insulation for VW	4x aluminium butyl, thickness 3mm (dimensions: 50cm x 60cm) 2x expanding foam, thickness 5mm (size: 100cm x 50cm)	27980	84,-
Subwoofer control & setup switch		68495	39,-
Bluetooth Modul I for connection to amplifier (external)		68497	59,-
Activation of AUX input „High Power“ amplifier		64111-AUX-Klinke	50,-
Y-adapter for TV & Bluetooth module		68496	9,-
Interference suppression filter for TV		68499	20,-
Jack cable 7,5m 3,5mm Stereo		84387	12,-
Rocker switch / radio switch		69499	5,-

Xcellent-Power-Paket (Extension of subwoofer & amplifier power)		Art.-No.	RRP
Surcharge »Xcellent Power Package« Amplifier incl. ACO processor and 2x2 Ohm subwoofer (Upgrade of components included in the sound package)		11800-99	190,-
Conductor for controlling the DSP sound system		11025	119,-
AUX Erweiterung integrated in the „Xcellent“ amplifier		1800-AUX-Klinke	99,-
Bluetooth-Modul integrated in the „Xcellent“ amplifier		11087-BT	129,-
Bluetooth-Audio-Streaming-Modul optical		12304	159,-
Optical digital audio cable 0.5m Toslink cable		84386-5	16,-

If you have any questions, our team in Pliezhausen will be happy to help you at any time:

JEHNERT SOUND DESIGN

»Development and production of car audio systems«

Im Michelreis 14
 72124 Pliezhausen
 Tel.: 07127-93457-0
sounddesign@jehnert.de
www.jehnert.de



Share your Sound Experience
 with #JehnertSoundDesign



facebook.com/jehnertsounddesign



Subscribe to us on Youtube