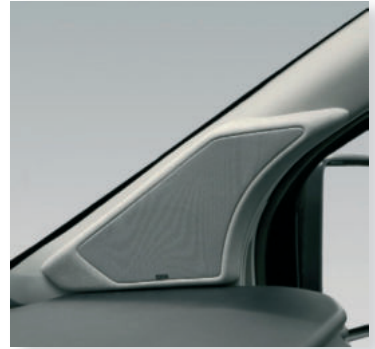


Ford Transit / Tourneo Custom

On tour and not having to do without anything...

... **SOUND EXPERIENCE**
in the Ford!





TO THE PRODUCTS

JEHNERT
Sound Design
AUTOMOTIVE

Ford Transit Tourneo Custom from model year 2012-2018



3-way cab system

In a precisely tuned listening position, a 55 mm midrange driver and 26 mm tweeter in vehicle-specific mid/high modules on the A-pillars create a perfect sound stage. For a powerful low frequency range, a 165 mm J-woofer is installed in the factory-fitted JEHNERT Power Woofer (mounting adapter included). The sound system is specially calibrated for the Ford Custom in terms of vehicle acoustics. This guarantees an optimum sound image and detailed music reproduction. Only suitable for vehicles with original Ford A-pillar panelling (without roller blind).

The woofers are installed using a custom-fit mounting adapter directly in the factory installation openings - mounting adapter included in the scope of delivery.

An additional subwoofer and amplifier perfect the system for every sound and performance requirement, see sound package 1.

The 2-way rear system for the passenger area completes the front system with perfect surround sound. Two 165 mm woofers in the rear side panelling (adapter plates included) ensure improved basic sound reproduction.

The 26 mm tweeters are integrated in the C-pillars.



Mid-high module in the A-pillar

Sound package 1 »Driver's cab« Ford Transit Tourneo Custom

Driver's cab:

- 3-way sound system (Art.-Nr. 65900)
- Bassreflex-Subwoofer »17008E«
- High-performance amplifier incl. Ford sound setup
- Subwoofer connection cable »plug & play« 4,8 m



5-channel DSP amplifier



Bass reflex subwoofer »17008E«



3-way front system incl. 165 mm woofer for vehicle doors

Rear system:

- 2x 165mm Woofer »XM165« inkl. Adapter plates
- 2x 26mm Neodymium soft dome tweeter »XE26«
- JEHNERT crossovers, calibrated for specific vehicles



Product description	Item no.	UVP
3-Ways sound system »Driver's cab« - inkl. Mid-high range system	65900	549,-
2-way rear system - for factory installation locations	65960	205,-
Sound package 1 with digital high-performance amplifier »64111-TPG«	69900-8	1.634,-
Optionales Zubehör		
»plug & play«-Adapter for original FORD radio up to 2018	11074	35,-
Ford insulation 4x Alubutyl, Strength 3mm, (Size: 50cm x 60cm) 2x Dämmvlies, Strength 10mm, (Dimension: 100cm x 60cm)	27980	84,-



TO THE PRODUCTS

JEHNERT
Sound Design
A U T O M O T I V E

Ford Transit Tourneo Custom from model year 2018



3-way cab system

Two 80mm midrange drivers and two 26mm tweeters in vehicle-specific midrange/tweeter modules on the A-pillars achieve a perfect sound stage in a precisely tuned listening position. A 165mm JEHNERT power woofer (mounting adapter included) in the factory-fitted location of the vehicle doors ensures a powerful bass range.

The sound system is specially calibrated for the Ford Transit Custom in terms of vehicle acoustics.

This guarantees an optimum sound image and detailed music reproduction.

Speaker configuration:

2x 165 mm JEHNERT Power Woofer »XM165«
2x 80 mm Midrange speaker »XE80«
2x 26 mm Neodymium soft dome tweeter »XE26«
2x JEHNERT crossovers, calibrated

Technical data:

Load capacity Duration / music: 2x 80 / 160 Watt
Transmission range: 49 - 22.000 Hz
Impedance: 4 Ohm
recomm. Amplifier power: from 2 x 50 - 100 Watt @ 4 Ohm



Mid-high module in the A-pillar

Sound package 1 »Driver's cab« Ford Transit Custom

Driver's cab:

- 3-way sound system (Art.-Nr. 65970)
- Subwoofer of your choice
- digital 5-channel amplifier
- incl. pre-installed Ford sound setup
- »plug & play« Connection cable for subwoofer and amplifier



5-channel DSP amplifier



Bass reflex subwoofer



3-way front system incl. 165 mm woofer for vehicle doors

Product description	Item no.	RRP
3-way sound system »Driver's cab« - incl. mid-high range system	65970	549,-
Sound package 1 with digital high-performance amplifier »64111-TPG«	66970-8	1.634,-
Door subwoofer for Ford Transit Custom incl. 1x165mm double voice coil and connection cable 3.3m Not included as standard in the sound package Surcharge for sound packages (RRP 280,-€)	17029	398,-
Optional accessories		
»plug & play«-Adapter for original FORD radio from 2018	11076	72,-
Insulation Ford 4x aluminium butyl, thickness 3mm, (dimensions: 50cm x 60cm) 2x insulating fleece, thickness 10mm, (size: 100cm x 60cm)	27980	84,-

Ford Transit Custom Türsubwoofer ab Bj. 2018

The Ford Transit Custom door subwoofer is installed in the driver's door to save space and perfectly rounds off the sound image in the lower frequency range. The subwoofer housing is completely closed and colour-coordinated with the side panelling. The 165 mm woofer is protected from external influences by a black metal grille. Thanks to the space-saving installation, the equipment variant of the cab is irrelevant and the subwoofer is suitable for all Ford Transit Custom models from 2018 onwards. This subwoofer is the ideal option for integrating a subwoofer if there is no suitable subwoofer under the driver/passenger seat.

Power RMS / Max:	1x 100 / 200 Watt
Efficiency:	90 dB 1W / 1m
Impedance:	4 x 2 Ohm
Linear diaphragm stroke:	+/- 5,0 mm



Further subwoofers to choose from:

Power RMS / Max:	1x 200 / 400 Watt
Efficiency:	87 dB 1W / 1m
Impedance:	4 x 3 Ohm
Linear diaphragm stroke:	+/- 6,5 mm



»17005«

Dimensions: 31 x 23,5 x 19,3 cm
 Weight: 5,6 kg



»17011«

Dimensions: 33,6 x 31,7 x 16,6 cm
 Weight: 7,4 kg

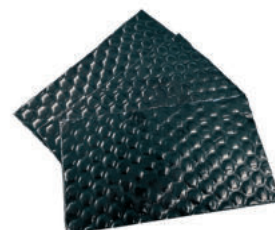
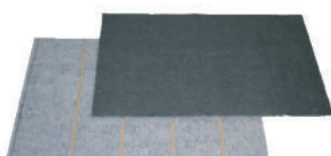
Insulation of vehicle doors and door panelling

The use of woofers in the door panelling causes vibrations from the basses, which lead to noise in the cab.

Measures against vibration noise: Insulation of the vehicle doors / side panelling

With the special insulation package for Ford and VW, the door panels/side panels can be insulated so that no disturbing vibration noises occur.

Scope of delivery consisting of:
 2x insulating fleece
 4x aluminium butyl



Product designation	Item no.:	RRP incl. VAT /€
Insulation Ford	27980	84,-



TO THE PRODUCTS

JEHNERT
Sound Design
A U T O M O T I V E

Ford Transit Custom Kombi

from model year 2014 (Suitable for all models with front roller blind)



2-way front system

The 2-way sound system for the cab guarantees high quality and first-class listening pleasure. High-performance 165 mm JEHNERT power woofers replace the factory-fitted loudspeakers in the vehicle doors and ensure a lively sound. Two high-quality 26 mm soft-dome neodymium tweeters integrated in the A-pillars offer crystal-clear highs in the optimum listening position. Thanks to the vehicle-specific crossovers, the sound system achieves a very high sound quality with a clear sound image and detailed high-frequency reproduction.

2-way coaxial rear system Westfalia »Nugget«

An optional 2-way rear system for the occupant area completes the 2-way front system (item no. 65950) with perfect surround sound. Two 100 mm coaxial loudspeakers in the front is provided by two 100 mm coaxial loudspeakers in the living area.

High-quality 2-way coax system

- 100 mm midrange driver
- 13 mm neodymium tweeter
- incl. mounting ring and cover grille



2-way coaxial rear system



Tweeter in the A-pillar

Sound package 1 »Driver's cab« Ford Transit Custom Kombi

Driver's cab:

- 2-way sound system (Art.-Nr. 65950)
- Subwoofer of your choice
- 5-channel amplifier
incl. pre-installed Ford sound setup
- »plug & play« Connection cable for subwoofer and amplifier



2-way front system



5-channel DSP amplifier



Bass reflex subwoofer



Sound package 2

Driver's cab:

- Scope of delivery as for sound package 1

Living area:

- 2 x Multibox 6600, 6600-4K, 7000 oder 7000-4K, Colour of your choice



2x Multibox of your choice

Product description	Item no.:	RRP
2-way cab system- for factory installation locations	65950	299,-
Sound package 1 with digital high-power amplifier „64111-TPG“	66920-8	1.284,-
Sound package 2 with digital high-performance amplifier „64111-TPG“ incl. living room speakers	66922-8	1.584,-
2-way coaxial rear system - incl. grille and fastening ring	11100-Coax-AG	90,-



TO THE PRODUCTS

JEHNERT
Sound Design
AUTOMOTIVE



Ford Transit

from model year 2014-2019 (Suitable for vehicles without A-pillar roller blind)

3-way sound system »Driver's cab«

Two 70 mm midrange drivers and two 26 mm tweeters in vehicle-specific mid-high modules on the A-pillars create an impressive sound stage. In the vehicle doors, two powerful 165 mm JEHNERT power woofers produce a powerful low-frequency range. The woofers are installed using a custom-fit mounting adapter. To achieve the full sound performance of the sound system, we recommend the sound package I, which significantly increases the sound performance of the system with the additional amplifier and subwoofer.

Note: Due to the factory-fitted Ford radio, an amplifier (ideally supplemented by a subwoofer) is absolutely essential in order to achieve a corresponding increase in sound quality!



Mid-high module in the A-pillar

Speaker configuration:

2x 165 mm JEHNERT Power Woofer »XM165«
2x 70 mm Midrange speaker »XF70«
2x 26 mm Neodymium soft dome tweeter »XE26«
2x JEHNERT-Crossovers, calibrated

Technical data:

Load capacity Duration / music: 2x 70 / 140 Watt
Transmission range: 49 - 22.000 Hz
Impedance: 4 Ohm
recomm. Amplifier power: ab 2 x 50 - 100 Watt @ 4 Ohm

Sound package 1 »Driver's cab« Ford Transit (YOM 2014)

Driver's cab:

- 3-way sound system (Art.-No. 65990)
- Subwoofer of your choice
- 5-channel amplifier
incl. pre-installed Ford sound setup
- „plug & play“ connection cable for subwoofer
and amplifier



3-way front system



5-channel DSP amplifier



Bass reflex subwoofer

Sound package 2

Driver's cab:

- Scope of delivery as for sound package 1

Living area:

- 2 x Multibox 6600, 6600-4K, 7000 or 7000-4K,
Colour of your choice



2x Multibox of your choice

Product description	Item no.	RRP
3-way cab system - incl. mid-high range system	65990	549,-
Sound package 1 with digital high-power amplifier „64111-TPG“	69991-8	1.634,-
Sound package 2 with digital high-power amplifier „64111-TPG“	69992-8	1.934,-



TO THE PRODUCTS

JEHNERT
Sound Design
AUTOMOTIVE



Ford Transit

from model year 2019 (Suitable for vehicles with and without A-pillar roller blinds)

3-way sound system »Driver's cab«

In order to optimise the sound characteristics for the mid-high range of the driver's cab, two 100 mm midrange drivers and two 26 mm tweeters in vehicle-specific mid/high modules on the dashboard achieve an impressive sound stage in a precisely tuned listening position. In the vehicle doors, two powerful 165 mm JEHNERT power woofers produce a powerful low-frequency range for an impressive sound presentation. The woofers are installed using a custom-fit mounting adapter. The sound system is specially calibrated to the vehicle acoustics of the cab. This guarantees a first-class sound image and detailed music reproduction.

Speaker configuration:

2x 165 mm JEHNERT Power Woofer »XM165«
2x 80 mm Midrange speaker »XE80«
2x 26 mm Neodymium soft dome tweeter »XE26«
2x JEHNERT-Crossovers, calibrated

Technical data:

Load capacity Duration / music: 2x 70 / 140 Watt
Transmission range: 49 - 22.000 Hz
Impedance: 4 Ohm
recomm. Amplifier power: ab 2 x 50 - 100 Watt @ 4 Ohm



Mid-high module on the dashboard

Sound package 1 »Driver's cab« Ford Transit (YOM 2018)

Driver's cab:

- 3-way sound system (Art.-Nr. 65940)
- Subwoofer of your choice
- 5-channel amplifier
incl. pre-installed Ford sound setup
- »plug & play« Connection cable for subwoofer and amplifier



3-way front system incl. 165 mm woofer for vehicle doors



5-channel DSP amplifier



Bass reflex subwoofer



Sound package 2

Driver's cab:

- Scope of delivery as for sound package 1

Living area:

- 2 x Multibox 6600, 6600-4K, 7000 or 7000-4K, Colour of your choice



2x Multibox of your choice

Product description	Item no.	RRP
3-way cab system - incl. mid-high range system	65940	549,-
Sound package 1 with digital high-power amplifier „64111-TPG“	69941-8	1.634,-
Sound package 2 with digital high-power amplifier „64111-TPG“	69942-8	1.934,-

Digital 5-channel amplifier

The digital 5-channel amplifier is extremely powerful and particularly versatile. It offers the possibility of the finest frequency programming with broadband frequency compensation as well as the transfer of frequencies and time corrections.

The amplifier has a dynamically regulated switching power supply, which minimises heat generation and power consumption.



Technical data	High-Power
Power Duration/Music:	8x 55 / 110 Watt @ 4 Ω 1 x 280/560 Watt @ 2 Ω
quiescent current:	< 1mA
Transmission range:	20-22.000 HZ
Power consumption:	
High volume	20A / 240 Watt
Medium volume	10A / 120 Watt
Quiet volume	3A / 36 Watt
Dimensions(HxBxT):	44 x 185 x 166mm
Weight	1.840g

AUX-In or Bluetooth® integrated in the amplifier

The AUX or Bluetooth® module expands the amplifier with a Bluetooth® audio streaming function or an AUX connection.

An AUX module is already integrated in the „High-Power“ version of the amplifier, but this must be configured. If both a connection via AUX and a Bluetooth connection via the „High-Power“ amplifier are required, it is possible to add the AUX module to the circuit board. the AUX module (64111-AUX jack) can be installed on the circuit board. With both power variants, a Y-adaption 1x AUX for the TV, and an external Bluetooth module (art. no.: 68497) can be connected to the second AUX connection.



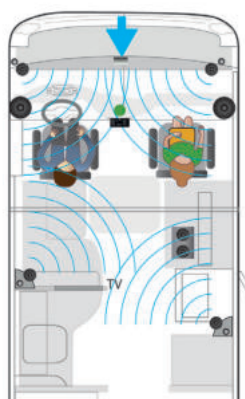
AUX activation „High-Power“ amplifier	64111-AUX-Klinke	50,-
AUX extension „Xcellent“ amplifier	11800-AUX-Klinke	99,-
Bluetooth-Module integrated in the „Xcellent“ amplifier	11087-BT	129,-

Amplifier control for subwoofer control & setup switch

The universal cable remote control makes it possible to control various functions such as the subwoofer intensity. The configuration options are programmed using special software. The remote control can be used, for example switch between two sound setups. This has the great advantage that the sound for driving and stationary operation can be specifically customised.

To use the setup change, the amplifier must be specifically programmed.

»Driving operation«

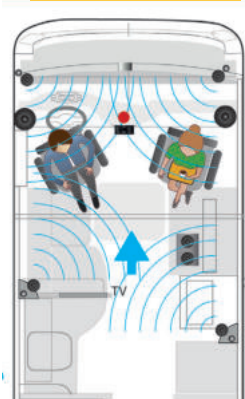


Positioning and adjustment of the individual speakers to the driver's seat by means of a runtime correction.

The sound is mainly reproduced from the front.



»Standby mode«



Positioning and adjustment of the individual loudspeakers to the driver and passenger seat without runtime correction.

- Rear speakers are connected to the front speakers
- Front speakers become the rear speakers



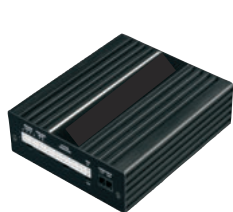
Subwoofer control & setup switch	68495	39,-
----------------------------------	-------	------

Xcellent Power Package

For all hi-fi purists, the „power pack bundle“ is the ideal extension. This includes the powerful 9-channel 64-bit DSP amplifier including ACO processor. The AUX or Bluetooth module can of course be added as accessories. When choosing the amplifier, the subwoofer is supplied in a high-power 2 Ohm dual voice coil version as standard. Instead of the regular subwoofer control and setup switch, the Conductor can also be selected as an option, which offers various setting options. The 8-channel DSP amplifier included as standard is replaced by a 9-channel 64-bit DSP amplifier including ACO processor in the Power Pack expansion set. It's not just the extra power that makes sound dreams come true, but also the addition of the subwoofer with 2 Ohm dual voice coil optimises the sound dynamics. All high-power sound packages can be expanded with the power pack. These components are an upgrade of the amplifier and subwoofer version included in the sound packages.

Technical data subwoofer:

Load capacity Duration / music: 300 / 600 Watt
 Max. linear diaphragm stroke: +/- 8,0 mm
 Impedance: 2 x 2 Ohm
 Efficiency 1 W / 1 m: 86,0dB



ACO processor DSP



200mm subwoofer with 2 Ohm dual voice coil

Technical data „ACO Processor DSP“

Load capacity Duration / music »Front- & Rear-Kanäle«	-Kanal A - F: 6x 65 Watt @4 Ohm - Sub Out G-H: 2x 90 Watt @4 Ohm -2x 160 Watt @2 Ohm
Load capacity Duration / music »Front- & Rear-Kanäle«	
Quiescent current	< 1 mA
Undervoltage detection	9,6 V (max. 5 Sek. bis hinab zu 6 V)
Transmission range	10 Hz - 22.000 Hz
Dimensions (H x B x T)	46 x 130 x 153 mm
Order no. ACO Processor DSP:	11800

Surcharge »Xcellent Power Package« Amplifier incl. ACO processor and 2x2 Ohm subwoofer (Upgrade of components included in the sound package)

11800-99

190,-

Setup switch for your personalised sound experience

The CONDUCTOR sound controller can be used to control and manage all the important functions of the (DSP) sound system - from volume control, signal source selection and setup change, through to control of the optional Bluetooth module. Manage differently optimised sound profiles of your DSP for rock, pop, classical or absolutely pure and always enjoy your music with optimum sound quality. Thanks to its compact design, the CONDUCTOR can be integrated almost seamlessly into the existing vehicle interior and blends unobtrusively into its appearance.

- Up to 4 volume menus configurable (Master, Digital, AUX, Subwoofer, Rear Attenuation)
 - Selectable volume range (60 dB, 24 dB, 12 dB)
 - Selectable volume levels (1 dB Schritte, 0,5 dB Schritte)
 - Individual colour configurable for each volume menu
 - Intuitive control of the Bluetooth playback and pairing function (Only for devices with optionally installed Bluetooth Extension Card)
 - 12 x RGB LEDs for visual feedback
 - Brightness and automatic dimming function configurable
 - Flush installation with Ø 40mm hole cut-out
 - 5 m wiring harness - split in two for easy installation.
- No separate power supply required
- Fully updateable and configurable with the DSP PC tool
 - Up to 12 configurable sound setups



Conductor for controlling the DSP sound system

11025

119,-

Bassreflex-Subwoofer – individually suitable for all Fiat models

We always recommend a subwoofer for the complete sound system.

The task of a subwoofer is to support the low frequency range.

It's not about sound pressure and decibels, but rather about achieving a clear, spirited sound dynamics and perfection of the room sound.

The JEHNERT bass reflex subwoofers were specially developed for leisure vehicles with limited space.

Despite the small enclosure volume, they deliver maximum sound quality.

All subwoofers are equipped with a 4.8 m „plug & play“ connection cable and are powered by the digital 5-channel amplifier to save energy.

Power Duration/Music:	1x 200 /400 Watt @ 2 Ω
Impedance: Efficiency 1W/1m	4x 3 Ω 87 dB

Instead of the variants for the driver's door or centre console, any other subwoofer can of course be selected.

Ideally suited for Ducato in the seat console of the driver's seat.



»17014«

Dimensions: 38 x 28 x 16 cm
 Weight: 7,3 kg



»17005«

Dimensions: 31 x 23,5 x 19,3 cm
 Weight: 5,6 kg



»17011«

Dimensions: 33,6 x 31,7 x 16,6 cm
 Weight: 7,4 kg

Further subwoofer variants and dimensions can be found in the subwoofer overview.

Loudspeaker »Living area«

Two speakers are usually installed in the rear area of the living area at the factory.

These factory-fitted installation locations are not used due to the unfavourable positioning.

In order to be able to enjoy excellent sound performance even when the vehicle is stationary, the cab system in the living area is extended by two high-quality loudspeaker boxes of your choice with a 2-way system.

The best acoustic positioning is in the seating area and the entrance area.

The result: the complete system achieves perfect spatiality - regardless of the listening position.



more examples on our website

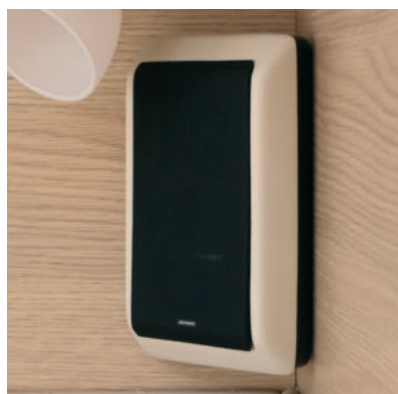
Living room boxes of your choice:

For the living area boxes, we recommend the Multibox „6600“ or „7000“.

To match the colour of your interior, you can choose between 8 different imitation leather colours.



Living room box 7000 living area „cream white“
 Corner mounting



Living room box 5500 Living area
 „beige natural“ corner mounting



Multibox PleX-Plade 6700 entrance area
 Extremely flat assembly

Bluetooth® - Receiver

Transfer music applications from your smartphone or tablet to your hi-fi system. Especially for vehicles with 12 V on-board power supply. With the Bluetooth® receiver, music can be played directly on the hi-fi system / TV / radio. The Bluetooth® receiver allows music to be streamed directly from a Bluetooth®-enabled device and uses Bluetooth® 4.0 technology to establish a wireless connection between the device and any receiver with an AUX input without putting excessive strain on the battery. The connection is simply made via a 3.5 mm jack plug.

Note: The external Bluetooth module allows you to use the sound system without switching on the radio. When using 2x AUX sources, the Y adapter is required.



Bluetooth Module I for connection to amplifier (external)	68497	59,-
---	-------	------

Y-adapter for two AUX inputs



To connect an additional AUX connection or external Bluetooth module to the digital amplifier (e.g. for TV connection) AUX connection or external Bluetooth module to the digital amplifier (see article Bluetooth receiver incl. 3.5 mm jack connection), it is possible to use two AUX inputs with the Y adapter. This means that 1x AUX can be used for the TV via the Y adapter and an external Bluetooth module (or other terminal device via jack) can be connected to the second AUX connection.

Y-adapter for TV & Bluetooth module	68496	9,-
-------------------------------------	-------	-----

Rocker switch

The rocker switch is used to use the sound system via AUX or Bluetooth®. The sound system is controlled via AUX or Bluetooth® without switching on the radio.



Rocker switch / Radio switch	69499	119,-
------------------------------	-------	-------

Interference suppression filter



The interference suppression filter with 3.5 mm jack connection filters out interference noises (humming, crackling, whistling) that can be caused by the vehicle's electrical systems. The filter is connected „plug & play“ between the audio source (TV or radio) and the amplifier. The interference suppression filter prevents most of the noise occurring in the vehicle.

- Eliminates interference noise, ground hum loops, earthing problems
- Frequency: 2 - 20,000 Hz
- Connection via 3.5 mm jack
- No power supply required

Recommendation: The highest efficiency is achieved if the interference suppression filter is installed as close as possible to the output stage.

Interference suppression filter	68499	20,-
---------------------------------	-------	------

Jack cable 7,5m

The jack cable is used, for example, to optimise the connection between the TV set and radio or amplifier and smartphone or other end devices via a jack.

- Metal plug incl. flexible premium cable
- 3.5mm jack plug to 3.5mm jack plug
- Gold-plated plug contacts
- precisely fitting plugs for a perfect connection of audio components



Jack cable 7,5m	84387	12,-
-----------------	-------	------

Optional accessories		Item no.	RRP
»plug & play«-Adapter for original Ford radio until 2018		11074	35,-
»plug & play«-Adapter for original Ford radio from 2018		11076	42,-
Insulation Ford	4x aluminium butyl, thickness 3mm (dimensions: 50cm x 60cm) 2x expanding foam, thickness 5mm (size: 100cm x 50cm)	27980	84,-
Subwoofer control & setup switch		68495	39,-
Bluetooth Module I for connection to amplifier (external)		68497	59,-
Activation of AUX input „High Power“ amplifier		64111-AUX-Klinke	50,-
Y-adapter for TV & Bluetooth module		68496	9,-
Interference suppression filter for TV		68499	20,-
Jack cable 7,5m 3,5mm Stereo		84387	12,-
Rocker switch / radio switch		69499	5,-

Xcellent Power Package (Expanding the power of the subwoofer and amplifier)		Item no.	RRP
Surcharge »Xcellent Power Package« Amplifier incl. ACO processor and 2x2 Ohm subwoofer (Upgrading the components included in the sound package)		11800-99	190,-
Conductor for controlling the DSP sound system		11025	119,-
AUX extension integrated in the „Xcellent“ amplifier		1800-AUX-Klinke	99,-
Bluetooth-Module integrated in the „Xcellent“ amplifier		11087-BT	129,-
Bluetooth-Audio-Streaming-Modul optical		12304	159,-
Optical digital audio cable 0.5m Toslink cable		84386-5	16,-



Our team in Pliezhausen will be happy to help and advise you at any time:

JEHNERT Sound Design

»Development and production of car audio systems«

