

# SOUNDSYSTEMS

2013/2014



**MOTORHOME  
CARAVAN  
VAN**



*Sound and design perfectly integrated!*



# DESIGN ELEMENTS

## FOR THE CAR INTERIOR



- ▶ great ambience
- ▶ high quality materials
- ▶ exclusive details
- ▶ top level craftsmanship



# COMPETENCE



## ...IN SOUND

To satisfy higher demand for sound and for significant sound improvement it is not enough to just replace the speakers. Acoustically the right location and individual tuning is important for a good sound result.

Uniquely in the aftermarket **JEHNERT** Sound Design develops and produces car specific crossover-networks.

## ...AND DESIGN

By nature of their design space is very limited. The solution required for the installation of several speakers must be more sophisticated than the conventional methods applied in automotive acoustics.

**JEHNERT**-soundsystems are unique in their construction and design. Design lines and details of the car interior are kept in style and continued in the construction materials. Elegant design and fine visual appearance noble optics make the sound modules fit perfectly to the optics of the vehicle interior and the living area.

With their minimal footprint and low profile they realise an optically smooth and beautifully shaped integration of a complete speaker system.



# MATERIAL OF HIGH QUALITY

## Individual covering material

Our own saddlery puts every effort to meet the high demands of our customers regarding high quality materials and a perfect finish. Special colours, artificial or genuine leather up to ornamental seams are provided individually according to your wishes.

## Standard version sound modules driver's cabin

All speaker enclosures are covered with original or optically corresponding artificial leather. See the price list for the standard colour contained in the scope of supply. Special colours and genuine leather cover are also available on request for an extra charge. The loudspeakers are covered completely invisible with flush joint grills and thus offer optimal protection against damage and theft. The grills are covered with durable and light-resistant acoustics cloth.



- ▶ artificial leather
- ▶ genuine leather, individual with ornamental seams
- ▶ carbon-, kevlar-, aluminium-, or wood-optics
- ▶ coloured painting/lacquering
- ▶ flocking



- low weight at a high degree of stability ◀
- high corrosion resistance ◀
- excellent forming ◀
- high safety degree ◀

# PRECISE WORKMANSHIP

## Exact fit - guaranteed ! ... from model to series

Every new model of a doorboard originates from a real installation in the car. The first model for tooling is made ready to fit in our own model workshop with high workmanlike perfection. Series production only begins after the installation of a first sample in a vehicle.

Every speaker enclosure in series production is precisely prepared for the saddlery work and checked again for a perfect fit on the original dashboard. More than 80 original doorlinings for different car models guarantee a **100% fit.**

## Material and safety

All JEHNERT sound moduls are made of **GRP** (glasfibre reinforced plastic) exclusively. GRP stands for low weight, high degree of stability and high corrosion and weather resistance. Since GFK breaks off bluntly this material grants high security standard.



# SOUNDS OF SUCCESS

QUALITY MADE IN GERMANY

**JEHNERT**-speakers are subject to continuing development in sound and technique. Over the years this has resulted in speakers with excellent sound results in in-car entertainment acoustics.

## JEHNERT Soundsystems guarantee:

- ▶ very high quality
- ▶ a maximum of stability underload
- ▶ acoustic customization

# THE SECRET OF A GOOD SOUND

The acoustic frequency response customization:

## ***Sound field – car interior:***

Generally, the given acoustic conditions in a vehicle are unfavourable, moreover they are different in each type of car. The limited interior space, its form and the materials used, lead to car-specific deflections for example impairing the sound transmission and its reproduction.

Even high quality loudspeakers are compromised in their performance and sound quality, if the interior acoustic environment is ignored. It is dependent on the crossover design to make use of the acoustic properties of the driver.

## ***Sound image:***

extensive measurement studies yield the decisive parameters for perfect sound. It is the sensitive precision work of developing crossover networks, for which no standard calculation formulas does exist.

The acoustic customization is performed in two steps:

## ***The „electronic“ adaptation:***

After installing the speakers in the car, the frequency response in the hearing position is evaluated via a test signal. Hereby frequency response deficiencies are identified. Through a highly developed measuring technique the sound emission angle of the loudspeakers, possible wiring schemes and parameters are tested and determined.

## ***The adaptation through „hearing tests“:***

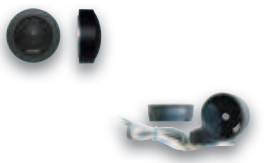
In the end the trained ear is the most sensitive judge of a harmonic sound tuning. The acoustic finetuning of the theoretical calculations and the correction of the residual transmission errors is therefore performed by longlasting hearing tests.

## ***Sound quality:***

High-quality electronic components and a precisely defined network guarantee excellent sound results and positive assessments by the professional press.



XE 26



26mm (1") Neodymium Dome tweeter

Universal installation options: choice of surface or built-in housing or for direct installation - without housing - into factory cut-outs • 26 mm (1") Hifi fabrics dome driver with protective grill and loudspeaker cable for easy and safe connection • powerful Neodymium-magnet driver and ferrofluid cooled voice-coil warrant high efficiency and high power handling • exact and very balanced high range reproduction • crisp high-range playback and excellent dispersion range

XE 26 V



26mm (1") High-End Neodymium Dome tweeter

26mm softdome tweeter with Neodymium magnet and additional volume to reduce the resonance frequency to 800 Hz • the result is a much richer sound performance in the upper midranges • the frequency response of this tweeter is absolutely outstanding

XE 55



55mm (2") Neodymium midrange

compact midrange speaker, which is due to its measurements, especially suitable for difficult places of installation as e.g. in the dashboard • very linear frequency-response curve

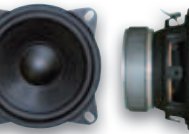
XE 80



80mm (3") midrange driver

High-tech paper cone with surface coating to avoid cone resonances • a 19mm voice coil with an aluminium voice coil former guarantees a high power handling

XE 100



100mm (4") midrange driver

High-tech paper cone with surface sand coating to avoid cone resonances • the rubber surround has been designed for extreme movements and longevity • a 26mm voice coil with an aluminium voice coil former guarantees a high power handling

XM 110



100mm (4") High-End midrange driver

Bayonet assembly ring for front mounting or rear mounting • very stable and rigid polypropylene membrane to avoid resonance vibration • high resistance to light and aging • durable solid rubber surround • due to low mass motion absolute impulse fidelity in a very wide frequency range

Technical specifications:

speaker	XE 26	XE 26 V	XE 55	XE 80	XE 100	XM 110
Nominal power handling	300 Watt (@4.0 kHz)* 12 db	300 Watt (@2.500 kHz)* 12 db	200 Watt (@200 kHz)* 6 db	200 Watt (@200 kHz)* 6 db	200 Watt (@200 kHz)* 6 db	200 Watt (@200 kHz)* 6 db
Peak power handling	400 Watt (@4.0 kHz)* 12 db	400 Watt (@2.500 kHz)* 12 db	300 Watt (@200 kHz)* 6 db	300 Watt (@200 kHz)* 6 db	300 Watt (@200 kHz)* 6 db	300 Watt (@200 kHz)* 6 db
Frequency response	1.500–25.000 Hz*	800–25.000 Hz*	239 - 20.000 Hz	80 - 16.000 Hz	89–8.900 Hz	80–9.000 Hz*
Impedance	4 Ω	4 Ω	4 Ω	4 Ω	4 Ω	4 Ω
Sensitivity (1W/1m)	89 db	90 db	91 db	91 db	91 db	87 db
VAS	–	–	0,16 dm³	0,89 dm³	2,0 l	2,0 l
Fs	1.500 Hz	400 Hz	239 Hz	115 Hz	89 Hz	80 Hz
QMS	–	–	4.6	4.53	3.10	2.87
QES	–	–	0.8	0.8	0.59	0.55
QTS	–	–	0.7	0.68	0.50	0.46
Voice coil diameter	25 mm	25 mm	54 mm	19 mm	25 mm	25 mm
Magnetic material	Neodymium	Neodymium	Ferrite	Ferrite	Ferrite	Ferrite
Chasses-Diameter	54 mm	54 mm	58 mm	80 mm	101 mm	100 mm
Mounting Depth	15 mm	22 mm	20 mm	41 mm	52 mm	52 mm
Mounting Diameter	35 mm	35 mm	55 mm	71 mm	94 mm	90 mm

\* values with crossover

High-End COAX system

100mm (4") mid-range driver with polypropylene membrane to avoid natural oscillation • 26 mm (1") softdome tweeter with protective grill, aluminium voice coil for effective acoustic pressure rise and more dynamic frequency response • absolutely separately controllable • especially in the front range crystal clear reproduction of high frequency sounds without sharp edges or negative resonances in the midrange



XL 112

130mm (5") low midrange driver

High-tech paper cone with surface sand coating to avoid cone resonances • the rubber surround has been designed for extreme movements and longevity • a 26mm voice coil with an aluminium voice coil former guarantees a high power handling



XE 130

130mm (5") low midrange driver

High-tech paper cone with surface sand coating to avoid cone resonances • the rubber surround has been designed for extreme movements and longevity • a 26mm voice coil with an aluminium voice coil former guarantees a high power handling • resonance frequency reduced with an additional mass in order to produce basses in lower volume ranges



XE 130 G

160mm (6") low midrange driver »power woofer«

Since many years passes all tests of the JEHNERT systems successfully and withstands the enormously & durable forceful power of the systems – guaranteed!

Extra slim 6,5" metal basket, especially for space-saving side-by-side installation of several speakers when space is limited • four external mounting eyelets • membrane area corresponds to an Euro standard chassis • description see »XM 165« (XM 160 and XM 165 only differs in basket size)



XM 160

165mm (6.5") low midrange driver »power woofer«

Since many years passes all tests of the JEHNERT systems successfully and withstands the enormously & durable forceful power of the systems – guaranteed!

165mm Euro-Norm-Chassis • high quality rubber surround • UV-stabilized, special coated paper membrane • capton voice coil and magnet vent in the pole core, rear vented alignment • extremely high resilient • alternatively with protective grills  
Modified version ... even more power ... even more performance ... even more sound!



XM 165

200mm (8") »Flat-line« woofer with Neodymium drive

200mm (8") woofer with powerful integral Neodymium magnet drive • high-tech paper cone with surface coating to avoid cone resonances • 37mm voice coil with aluminium voice coil former • the rubber surround and the long throw voice coil guarantee extreme high excursions and absolutely stable power handling • good for kick-bass (with subsonic filter starting from 80 Hz) • due to low profile and weight specially suited for problematic installation areas • weight only 660 grams



XE 200

Technical specifications:

speaker	XL 112	XE 130	XE 130 G	XM 160	XM 165	XE 200
Nominal power handling	200 Watt (@200 kHz)* 6 db	200 Watt (@200 kHz)* 6 db	200 Watt (@200 kHz)* 6 db	70 Watt	70 Watt	130 Watt
Peak power handling	300 Watt (@200 kHz)* 6 db	300 Watt (@200 kHz)* 6 db	300 Watt (@200 kHz)* 6 db	140 Watt	140 Watt	200 Watt
Frequency response	100–22.000 Hz*	72–8.000 Hz*	55–5.000 Hz	49–5.000 Hz	49–5.000 Hz	42–4.000 Hz
Impedance	4 Ω	4 Ω	4 Ω	4 Ω	4 Ω	4 Ω
Sensitivity (1W/1m)	88 db	89 db	90 db	90 db	90 db	91 db
VAS	2,0 l	3,9 l	4,26 dm³	16,2 l	16,2 l	27,7 l
Fs	90 Hz	72 Hz	55 Hz	49 Hz	49 Hz	42 Hz
QMS	3.02	2.87	3.41	3.77	3.77	4.65
QES	0.59	0.55	0.68	0.77	0.77	0.67
QTS	–	0.49	0.57	0.65	0.68	0.59
Voice coil diameter	25 mm	25 mm	37 mm	25 mm	25 mm	37 mm
Magnetic material	Ferrite	Ferrite	Ferrite	Ferrite	Ferrite	Neodymium
Chasses-Diameter	100 mm	131 mm	131 mm	160 mm	165 mm	208 mm
Mounting Depth	50 mm	53 mm	53 mm	64 mm	64 mm	50 mm
Mounting Diameter	93 mm	118 mm	118 mm	143 mm	143 mm	184 mm

\* values with crossover



## Speaker integration in the driver's cabin

### The dashboard turns to a sound stage

The exact position for the midrange and the tweeter is fixed on the basis of an acoustically fine tuning. If no possibilities for installing are factory set, custom made speaker enclosures are providing a widerange stage performance in the dashboard.

Powerful woofers in the side linings are accomplishing the sound conception in the driver's cabin. The car-customised fine tuning makes the front system to become its individual sound character and a perfect sound quality.



midrange tweeter module Ford Transit Custom



midrange module FIAT Ducato



midrange tweeter module Concorde Charisma / Liner

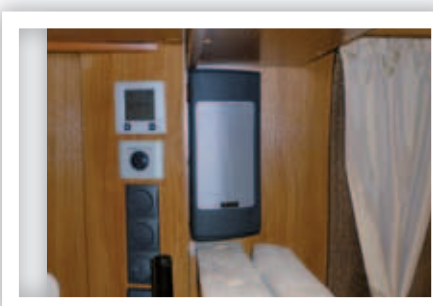
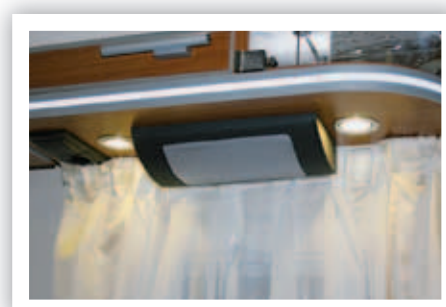


speaker integration driver's cabin  
Dethleffs Globetrotter XXL

## Speaker integration in the living area

### Sound and design - perfectly integrated

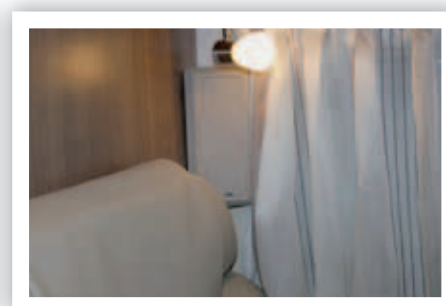
For the living area the sound concepts are going up to the 5.1. surround system. The different finishings are nearly unlimited. Shape, colour and material of the speaker boxes and coverings are always adjusted in harmony with the interior ambience.



speaker system for the living area  
Dethleffs Globetrotter XXL



speaker system for the living area  
Concorde Charisma

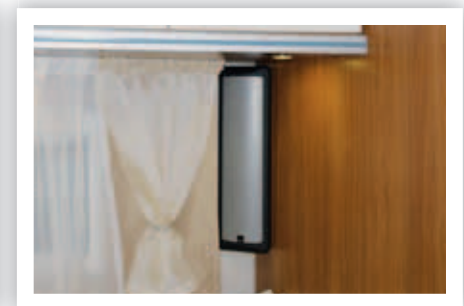
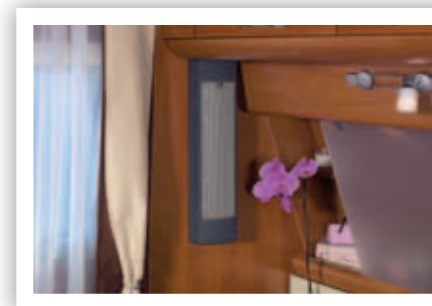
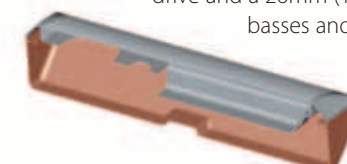


Multibox 6800

## Satellite boxes for the living area

### The living area as concert hall

To meet high demands in sound, the satellite boxes offer both: exclusive design and a first-class sound. A 130mm (5") low range woofer »XE 130 G« with reinforced magnetic drive and a 26mm (1") Neodymium-softdome tweeter »XE 26« are providing saturated basses and clear heights. The powerful satellite system offers a very pleasant and full sound image – even without subwoofer.

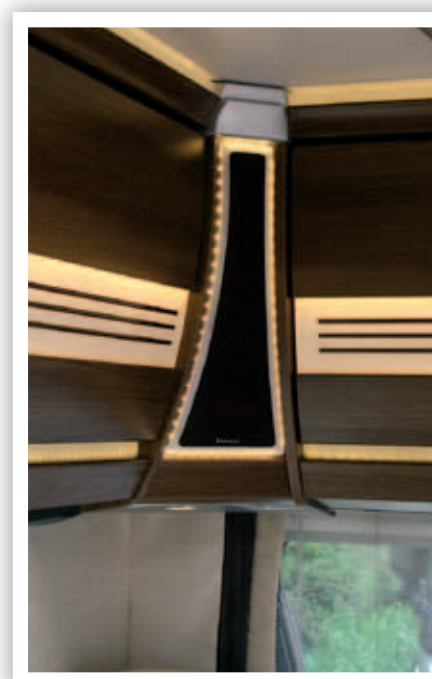


## Speakers as design elements in the living area

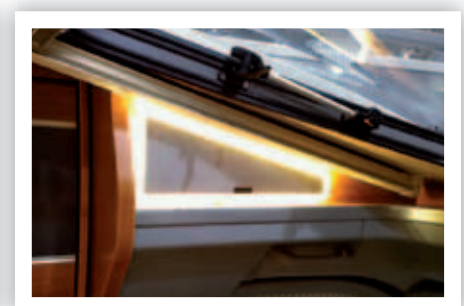
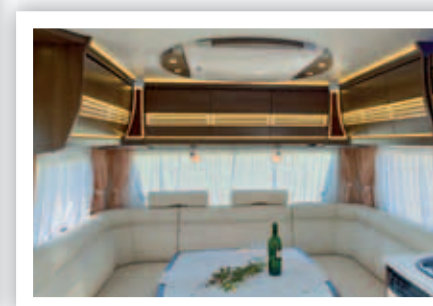
### Speaker boxes, which set standards in acoustic and design

Light creates a special ambience - and good music relaxes. Combining both elements a unique design innovation begins. These speakers for the living area with backlighted acrylic glass frame create new accents as an exclusive design element and offer brilliant sound qualities. The acrylic glass frames for sound modules can be adapted individually to any design of the living area. The pictures only show a few samples of different variations.

The backlighting with LED makes the speaker box to be an effective home accessory.



Lightsound corner box Dethleffs Beduin



Lightsound panels Dethleffs Fiat alcove



High-Performance 3-way-soundsystem »driver's cabin«



Customised speaker enclosures in grey or black artificial leather covering are harmonically integrating the midranges in the dashboard. The tweeter is placed in the A-pillar in order to perform clear highs perfectly at face level. The 100mm (4") High-End midranges and 26mm (1") Softdome-Neodymium tweeters are performing a wide and spacial sound stage. The powerful deep bass range is done by the 165mm (6.5") JEH-NERT Power Woofer in the original place in the car door (mounting adapter is included).

3-ways JEHNERT-Sound-System:

1 x 165 mm (6.5") JEHNERT Power Woofer »XM 165« / per side  
1 x 100 mm (4") High-End-midrange driver »XM 110« / per side  
1 x 26 mm (1") Neodymium-Dome tweeter »XE 26« / per side  
JEHNERT crossover circuit , car-customized measured

prod.code 65500

Technical details	
power nominal/peak:	2 x 80 / 160 Watt
frequency response:	49 - 22.000 Hz
impedance:	4 Ohm
recommended amp. power:	from 2 x 60 - 150 Watt @ 4 Ohm

Subwoofer system »driver's side«



Two 130mm (5") JEHNERT woofers "XE130 G" are accomplishing the sound conception in the driver's cabin with a rich and powerful bass playback. The bass reflex enclosure in exclusive artificial leather with ornamental seam replaces the lower storage compartment in the driver's door.

Performance: 1 x 120 Watt sinus / 200 Watt @ 2 Ohm

prod.code 65510



subwoofer module incl. cupholder



subwoofer module backside

Exklusive cupholder »driver's and co-driver's side«

cupholder  
driver's side

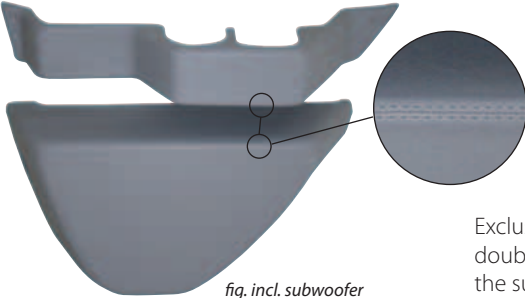


fig. incl. subwoofer



cupholder  
co-driver's side



Exclusive cupholder for bottles up to 1,5 l • high quality cover in artificial leather with double ornamental seam • for installation on the co-driver's or driver's side (e.g. above the subwoofer system) • each can be ordered separately.

prod.code 65550 - driver's side / 65560 - co-driver's side



Soundpackage 1

»Fiat Ducato driver's cabin«

driver's cabin:

- 3-way soundsystem (ref.no. 65500 – see page 11)
- bass reflex subwoofer system »driver's side« (ref.no. 65510 - see page 11)
- digital 5-channel-amplifier »plug & play« incl. Ducato-Sound-Setup (ref.no. 11050 - see page 22)
- subwoofer cable »plug & play« 4,8 m

prod.code 69001



3-way front system incl. 165mm (6.5")  
woofer for the car doors



bass reflex subwoofer system  
(delivery without cupholder)



digital 5-channel-amplifier »plug & play«

Soundpackage 2

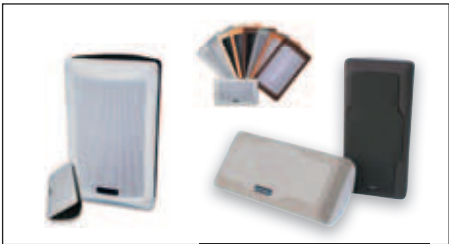
»Fiat Ducato driver's cabin and living area«

driver's cabin:

- 3-way soundsystem (ref.no. 65500 – see page 11)
- subwoofer system »driver's side« (ref.no. 65510 - see page 11)
- digital 5-channel-amplifier »plug & play« incl. Ducato-Sound-Setup (ref.no. 11050 - see page 22)
- subwoofer cable »plug & play« 4,8 m

living area:

- 2 pieces speaker boxes »Multibox 6000 or 6800« (see page 19)  
colour of the front cover and of the grill are optional



Multibox 6000 or 6800 -  
colour of the front cover is optional

prod.code 69002



3-way front system incl. 165mm (6.5")  
woofer for the car doors



bass reflex subwoofer system  
delivery without cupholder



digital 5-channel-amplifier »plug & play«



High-Performance 3-way soundsystem »driver’s cabin«



midrange module dashboard - cover in artificial leather

Sound performance for the Mercedes Sprinter

The speaker enclosures developed for the dashboard of the Mercedes Sprinter are placed in an optimal hearing position and do integrate two 80mm (3”) midrange speakers. Two 26mm (1”) Softdome-Neodymium tweeters in the A-pillars are accomplishing the 3-way system and are reaching a wide and spacial sound staging. The powerful and low frequency range is provided by a 165mm (6.5”) JEHNERT Power woofer (mounting adapter incl.) in each of the original mounts in the car doors. The sound system for the Sprinter is measured especially according to the acoustic environment. This guarantees an optimal sound image as well as a music playback which is rich in details.



165mm (6.5”) JEHNERT Power Woofer in the original mount of the car door

3-ways JEHNERT-Sound-System:

1 x 165 mm (6.5”) JEHNERT Power Woofer »XM 165« / per side  
1 x 80 mm (3”) midrange driver »XE 80« / per side  
1 x 26 mm (1”) Neodymium-Dome tweeter »XE 26« / per side  
JEHNERT crossover circuit , car-customized measured

prod.code 65700

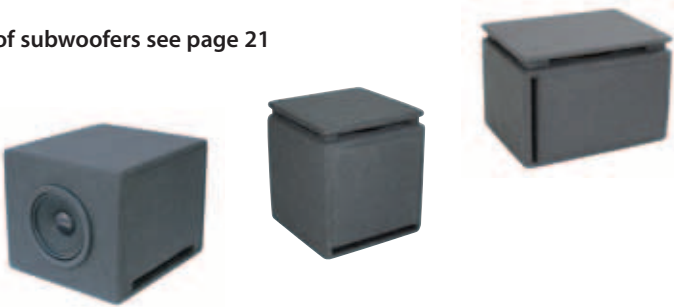
Technical details	
power nominal/peak:	2 x 80 / 160 Watt
frequency response:	49 - 22.000 Hz
impedance:	4 Ohm
recommended amp. power:	from 2 x 60 - 150 Watt @ 4 Ohm

Subwoofer system »living area«

Maximum sound - minimal volume!

An additional subwoofer allows vivacious sound dynamics and perfects the surround sound in the low frequency range. The bass reflex subwoofers are especially made for mobile homes with limited space available. Despite of the low volume, the exact calculated bass reflex port makes this subwoofer to reach a maximum in sound quality and optimizes the front system to a sparkling and dynamic sound package.

Varieties of subwoofers see page 21



Soundpackage 1

»Mercedes Sprinter driver’s cabin«

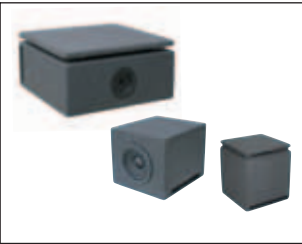
driver’s cabin:

- 3-way soundsystem (ref.no. 65700 - see page 13)
- subwoofer at one’s option (see page 21)
- digital 5-channel-amplifier »plug & play« incl. Sprinter-Sound-Setup (ref.no. 11050 -see page 22)
- subwoofer cable »plug & play« 4,8 m

prod.code 69003



3-way front system incl. 165mm (6.5”) woofer for the car doors



subwoofer at one’s option (see page 21)



digital 5-channel-amplifier »plug & play«

Soundpackage 2

»Mercedes Sprinter driver’s cabin and living area«

driver’s cabin:

- 3-way soundsystem (ref.no. 65700 - see page 13)
- subwoofer at one’s option (see page 21)
- digital 5-channel-amplifier »plug & play« incl. Sprinter-Sound-Setup (ref.no. 11050 -see page 22)
- subwoofer cable »plug & play« 4,8 m

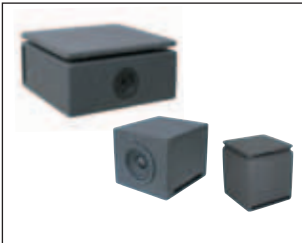
living area:

- 2 pieces speaker boxes »Multibox 6000 or 6800« (see page 19)  
colour of the front cover and of the grill are optional

prod.code 69004



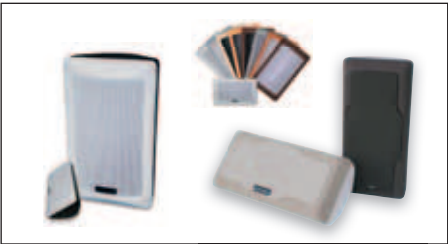
3-way front system incl. 165mm (6.5”) woofer for the car doors



subwoofer at one’s option (see page 21)



digital 5-channel-amplifier »plug & play«



Multibox 6000 or 6800  
colour of the front cover is optional



High-Performance 3-way soundsystem »driver’s cabin«



midrange tweeter module A-pillar  
- cover in artificial leather

**Brilliant sound perfectly integrated**  
Two 55mm (2") midrange speakers and 26mm (1") tweeters installed in a fine-tuned hearing position in the car-customized midrange-tweeter modules on the A-pillars are providing a perfect sound stage. The powerful low range is realized by a 165mm ( 6,5") JEHNERT Power-Woofer (mounting adapter incl.) on each side of the car doors (factory set place). The sound system is calibrated especially to the in-car acoustics of the Ford Custom and guarantees an optimal sound image as well as a detailed playback.



165mm (6.5") JEHNERT Power Woofer  
in the original mount of the car door

**3-ways JEHNERT-Sound-System:**  
1 x 165 mm (6.5") JEHNERT Power Woofer »XM 165« / per side  
1 x 55 mm (3") Neodymium midrange »XE 55« / per side  
1 x 26 mm (1") Neodymium-Dome tweeter »XE 26« / per side  
JEHNERT crossover circuit , car-customized measured

prod.code 65900

Technical details	
power nominal/peak:	2 x 80 / 160 Watt
frequency response:	49 - 22.000 Hz
impedance:	4 Ohm
recommended amp. power:	from 2 x 50 - 100Watt @ 4 Ohm

Subwoofer system »driver’s cabin«



An additional subwoofer allows vivacious sound dynamics and perfects the surround sound in the low frequency range. In the Ford Custom the bass-reflex subwoofer»PP 8Q-E« is placed under the co-driver’s seat. Despite of the low volume, the exact calculated bass reflex port makes this subwoofer to reach a maximum in sound quality and optimizes the front system to a sparkling and dynamic sound package.

prod.code 11008E

Technical details	
power nominal/peak:	2 x 160 / 320 Watt
frequency response:	32 - 180 Hz
impedance:	4 x 2,5 Ohm

Soundpackage »driver’s cabin«

- 3-way soundsystem (ref.no. 65900 - see page 15)
- bass reflex subwoofer »PP 8Q-E« (ref.no. 1008E - see page 15)
- digital 5-channel-amplifier »plug & play« incl. Ford-Sound-Setup (ref.no. 11052 -see page 22)
- subwoofer cable »plug & play« 4,8 m

prod.code 69900



3-way front system incl. 165mm (6.5")  
woofer for the car doors



digital 5-channel-amplifier »plug & play«



bass reflex subwoofer (see page 15)



complete set soundpackage driver's cabin

2-way soundsystem driver’s cabin »basic«

- 2x 165mm JEHNERT Power Woofer »XM 165« incl. mounting adapter for the original mount in the car door
- 2x 26mm Neodymium-Dome tweeter »XE 26« for mounting in the A-pillar
- JEHNERT crossover circuit, car-customized measured

prod.code 65950



tweeter A-pillar



complete set soundsystem »basic«

2-way rearsystem

The optional 2-way rearsystem for the passenger compartment completes the soundsystem with a perfect surround sound.

- 2x 165mm JEHNERT Power Woofer »XM 165« incl. mounting adapter for the original mount in the rear side panel
- 2x 26mm Neodymium-Dome tweeter »XE 26« for mounting in the C-pillar
- JEHNERT crossover circuit, car-customized measured

prod.code 65960



tweeter C-pillar



complete set 2-way rearsystem



High-Performance 3-way soundystem »driver’s cabin«



midrange tweeter module A-pillar - cover in artificial leather

The customised speaker enclosures on the A-pillar are providing a wide and voluminous stage image each with a 55mm Neodymium midrange speaker and a 19mm (0,75") Softdome-Neodymium-tweeter. According to customer’s request it can be ordered with either two 165mm (6,5") Power-woofers or with two of the extremely low-profiled 200mm woofers. Installation is made with two car-customized mounting adapters in the original cut-outs. The car-customized crossovers do optimize the sound system with a rich sound image and vivacious sound dynamics.

Technical details	
power nominal/peak:	2 x 70 / 140 Watt
frequency response:	58 - 22.000 Hz
impedance:	4 Ohm
recommended amp. power:	from 2 x 50 - 100 Watt @ 4 Ohm

JEHNERT frontsystem:  
optional:

1 x 165 mm (6.5") JEHNERT Power Woofer »XM 165« / per side  
1 x 55 mm (3") Neodymium midrange »XE 55« / per side  
1 x 19 mm (0,75") Neodymium-Dome tweeter »XE 19« / per side  
JEHNERT crossover circuit , car-customized measured

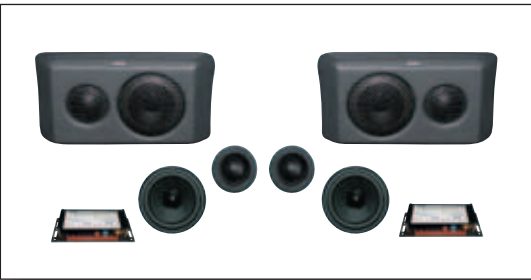
prod.code 65600

OR:

1 x 200 mm (8") JEHNERT Flat Woofer »XE 200« / per side  
1 x 55 mm (3") Neodymium midrange »XE 55« / per side  
1 x 19 mm (0,75") Neodymium-Dome tweeter »XE 19« / per side  
JEHNERT crossover circuit , car-customized measured

prod.code 65610

2-way rearsystem



The optional 2-way rearsystem for the hatchback completes the sound system with a perfect surround sound. The system has been integrated above the rear bed and not in the original place.

JEHNERT rearsystem:

1 x 55 mm (3") Neodymium midrange »XE 55« / per side  
1 x 19 mm (0,75") Neodymium-Dome tweeter »XE 19« / per side  
JEHNERT crossover circuit , car-customized measured

prod.code 67100

Technical details	
power nominal/peak:	2 x 50 / 100 Watt
frequency response:	200 - 22.000 Hz
impedance:	4 Ohm
recommended amp. power:	from 2 x 50 - 100 Watt @ 4 Ohm

Soundpackage »frontsystem«

- 3-way soundsystem (ref.no. 65600 - see page 17)
- subwoofer at one’s option (see page 21)
- digital 5-channel-amplifier »plug & play« incl. VW-Setup (ref.no. 11052 -see page 22)
- subwoofer cable »plug & play« 4,8 m

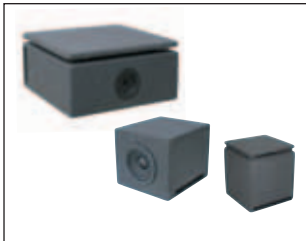
prod.code 69100



3-way front system incl. 165mm (6.5") woofer for the car doors



digital 5-channel-amplifier »plug & play«



subwoofer at one's option (see page 21)



complete set 2-way rearsystem

Iveco Mj.07 2-way soundystem »driver’s cabin«

The doorboards make it possible to install a powerful 165mm ( 6,5") woofer. The original mount in the dashboard is not recommended for acoustic reasons and because of the low profile measurements. The surface structure of the doorboards is the same as the doorlining. Speaker’s protective metal grill in black. The 2-way soundsystem in the car door reaches a significant sound improvement in comparison with the original chassis. It consists of one 26mm ( 1")Neodymium-Softdome tweeter, one 165mm (6,5") JEHNERT Power Woofer and a high-quality car-customized crossover per side. The complete speaker system is installed in the car doors.



woofer module car door

Technical details	
power nominal/peak:	2 x 70 / 140 Watt
frequency response:	49 - 22.000 Hz
impedance:	4 Ohm
recommended amp. power:	from 2 x 70 - 150 Watt @ 4 Ohm

JEHNERT-Soundsystem

1 x 165 mm (6.5") JEHNERT Power Woofer »XM 165« / per side  
1 x 26 mm (1") Neodymium-Dome tweeter »XE 26« / per side  
JEHNERT crossover circuit , car-customized measured

prod.code 65800

Integrated motorhomes 3-way soundystem »driver’s cabin«

This high-quality sound conception for integrated motor homes guarantees brilliant sound and an exclusive ambiance. The separate midrange-tweeter system is mounted on the dashboard in an optimal acoustic position and is providing a wide and open sound staging. The low-range fundament is a 130mm (5") or a 165mm (6,5") woofer in the side panels – depending on the place available. A subwoofer – available in different sizes (see page 21) - and two exclusive speaker boxes 6000 or 6800 (see page 19) support the perfect sound in the mobile home. The full sound package is driven by a digital 5-channel-amplifier.

Please note: Due to different layouts, we would be glad to submit you an individual soundsystem which is tailor-made with sample images. We look forward to your inquiry.

JEHNERT soundpackage »130« oder »165«

- 3-way soundsystem:
  - 1 x 130 mm / 160mm JEHNERT Power Woofer »XE 130/XM 165« / per side
  - 1 x 100 mm High-End midrange »XE 100« / per side
  - 1 x 26 mm Neodymium-Softdome tweeter »XE 26« / per side
  - JEHNERT crossover circuit, car customized measured
- subwoofer at one’s option (see page 21)
- digital 5-channel-amplifier »plug & play« (ref.no. 11052 -see page 22)
- subwoofer cable »plug & play« 4,8 m
- 2 pieces speaker boxes »Multibox 6000 or 6800« (see page 19)  
colour of the front cover and of the grill are optional

Bestell-Nr. 69200-130 oder 69200-165

JEHNERT soundpackage »200«

- 2-way soundsystem:
  - 1 x 100 mm High-End midrange »XE 100« / per side
  - 1 x 26 mm Neodymium-Softdome tweeter »XE 26« / per side
  - JEHNERT crossover circuit, car customized measured
- subwoofer at one’s option (see page 21)
- digital 5-channel-amplifier »plug & play« (ref.no. 11052 -see page 22)
- subwoofer cable »plug & play« 4,8 m
- 2 pieces speaker boxes »Multibox 6000 or 6800« (see page 19)  
colour of the front cover and of the grill are optional

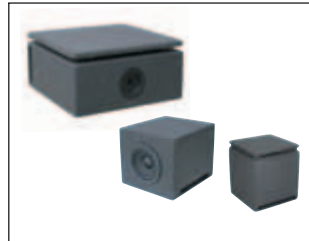
Bestell-Nr. 69200-Sub



installation example midrange tweeter system



digital 5-channel-amplifier »plug & play«



subwoofer at one's option (see page 21)



Multibox 6000 or 6800



# Speaker boxes for the living area

## Multibox 6000 / 6800

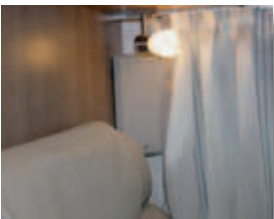
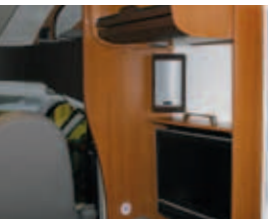


### A small hifi all-rounder while traveling!

It should be brilliant in sound - compact, small and perfectly integrated?

With its unique construction in two parts the small and variable box offers many possibilities for mounting and installing. Installing is very simple and fast by the strong adhesive Velcro system e.g. on the wardrobe, dividing walls, frames or as corner box. The front enclosure can be combined with any design of the living area and is available in many colours (see page 20).

With the high-quality Jehnert speaker system »made in Germany« you may enjoy your music with your eyes.



## LED-Satelliten-Box 6100

### The allround hifi talent with LED back lighting as a spectacular home accessory!

Do you still wish to have some more ambience? LEDs are setting exclusive highlights and make your speaker box to be a design object in the living area. The Mulibox 6100 with an integrated LED light unit provides pure sound pleasure and a very special comfortable atmosphere with its warm white shining LED points of light.

The highlight in sound is a 80mm (3") fullrange speaker, a new development "made in Germany" with a play back of the whole audible range of frequency

prod.code 6100-L with LED-technique  
6100 without LED-technique



# Speaker boxes for the living area

## High-Performance bass reflex box 9000

### Come in for the luxury class of the sound systems!

Come in for the luxury class of the sound systems! Exclusive in design and brilliant in sound – these high performance speaker box for the living area with individual fields of applications. Mono, stereo, quattro or as 5.1 surround system – **you will enjoy a first-class sound with perfect integration!**

This highperformed full-range system offers a very pleasant full sound image even without a subwoofer. Using the 5.1. surround system an additional active subwoofer provides real cinema feeling.

The finishings are nearly unlimited. Artificial leather, fine genuine leather, ornamental seam or chrome parts – finishings will be made according to your requests and are matched with the ambience of your living area.



prod.code 9000

## Colours according to your wishes



All speaker boxes for the living area are available for the front parts in 8 different colours (standard version). Special other colours on request. Please ask for our colour samples.

grills: silver or black  
acoustic cloth: on request



## Technical details – speaker boxes for the living area

speaker box:	Multibox 6000	Multibox 6100 / 6100-L	Multibox 6800	bassreflex box 9000
speaker system:	1x XE26 / 1x XE 100	1x XE 80 midrange driver	1x XE 80 midrange driver	1x XE 20 / XE 100
power nominal/peak:	50 / 100 Watt	40 / 80 Watt	40 / 80 Watt	50 / 100 Watt
frequency response:	70 - 22.000 Hz	100 - 22.000 Hz	100 - 22.000 Hz	70 - 22.000 Hz
impedance:	4 Ohm	4 Ohm	4 Ohm	4 Ohm
dimensions (h x w x d):	23 x 13,5 x 10,5 cm	20,2 x 12,8 x 11,5 cm	24,2 x 11,4 x 7,5 cm	47,5 x 14 x 10 cm



Developments for subwoofer - individually for motorhome and caravan

Perfect sound dynamics • compact construction • space saving integration

Subwoofers are intended to support the low frequency range. Developing our subwoofer solutions for mobile homes and caravans it is not about sound pressure or decibel, but much more about reaching clear and vivacious sound dynamics and to perfect the surround sound. *Feel the sound and enjoy the music – without disturbing vibration noises and booming basses.*

Especially for recreational vehicles with limited space available the JEHNERT bass reflex subwoofer has been developed. Despite of its low enclosure volume the performance is a maximum in sound quality.

Each subwoofer is equipped with a »plug & play« cable and driven energy saving by a digital 5-channel amplifier.

subwoofer		prod.code	speaker	power nominal/peak	frequency response	impedance
»SUB 200 QC« dimensions: 35 x 35 x 15,5 cm weight: 7,4 kg		17000	1x 200mm (8")	1x 200 / 400 Watt @ 2 Ohm	30 - 180 Hz	4x 2,5 Ohm
»SUB 160 2B« dimensions: 58 x 20 x 25 cm weight: 9 kg		17001	2x 166mm (6,5")	1x 160 / 320 Watt @ 2 Ohm	32 - 180 Hz	4x 2,5 Ohm
»SUB PP 8Q-C« dimensions: 25,5 x 26,5 x 29 cm weight: 5,6 kg		17002	1x 200mm (8")	1x 160 / 320 Watt @ 2 Ohm	32 - 180 Hz	4x 2,5 Ohm
»SUB PP 8Q« dimensions: 23,5 x 23,5 x 26,5 cm weight: 5,6 kg		17003	1x 200mm (8")	1x 160 / 320 Watt @ 2 Ohm	32 - 180 Hz	4x 2,5 Ohm
»SUB 160 2-LS« dimensions: 42,5 x 26,5 x 20,5 cm weight: 7,4 kg		17004	2x 166mm (6,5")	1x 160 / 320 Watt @ 2 Ohm	32 - 180 Hz	4x 2,5 Ohm
»SUB PP 8Q-KN« dimensions: 31 x 23,5 x 19 cm weight: 5,6 kg		17005	1x 200mm (8")	1x 160 / 320 Watt @ 2 Ohm	32 - 180 Hz	4x 2,5 Ohm
»SUB 160 2T« dimensions: 31 x 30,5 x 28 cm weight: 9,2 kg		11007E	2x 166mm (6,5")	1x 160 / 320 Watt @ 2 Ohm	32 - 180 Hz	4x 2,5 Ohm
»SUB PP 8Q-E« dimensions: 18,9 x 34 x 31 cm weight: 6,4 kg		11008E	1x 200mm (8")	1x 160 / 320 Watt @ 2 Ohm	32 - 180 Hz	4x 2,5 Ohm

Digital 5-channel amplifier »plug & play«

5-channel amplifier with integrated digital signal processor

The turbo for your soundsystem!

The digital 5-channel amplifier is very energy-saving, powerful and very versatile. It offers the possibility for finest frequency programming with a broadband frequency compensation, the transfer of frequencies and time correction. For each sound system a car-customized setup has been developed with these parameters. The setup is pre-installed individually in every sound system. The compact 5-channel amplifier is equipped with a 160 watt output for the subwoofer. The large plug & play adapter system allows easy connection with the standard head units/radios as well as TVs.



easy to connect by ISO – adapter in the original radio

- car-specific setups rechargeable with the MicroSD-memory card
- easy to connect with ISO-adapter
- enormous sound by increased efficiency and 56-bit DSP-technology
- start/stop possibility down to 6 volts supply voltage
- AUX-input with signal-navigated switchover for external sources
- special plug & play active subwoofer output
- very energy saving
- extremely compact measurements

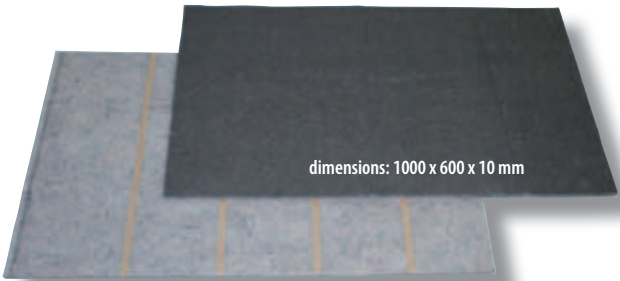
Technical details	
power nominal / peak »front&rear channels«:	4x 35 / 70Watt @ 4 Ohm
power nominal / peak »PP-subwoofer«:	1x 160Watt @ 2 Ohm
frequency response:	10 - 22.000 Hz
dimensions (h x w x d):	42 x 176 x 120 mm
prod.code	11052

Insulation fleece »self-adhesive«

flame retardant · with approval from the motor industry according to DIN 75200

»No more vibration noises!«

The flame retardant material has excellent sound deadening qualities. It corresponds to the strict demands on quality and regulations of the automotive industry and has been approved in accordance with DIN 75200. Not suitable for wet areas.



prod.code 27000



EASY • CLEAN • FAST - can also be used in multilayer!



1. Cut the insulation fleece according to the size of the door.



2. Pull away the adhesive foil on the back side of the fleece.

perfectly suitable for:

- door cards
- side panels
- rear shelves
- interior roof linings
- boots
- subwoofer housings
- compressors
- mobile homes
- boat cabins
- floor coverings





**Development and production  
of car-audio-systems**

Porsche Straße 15  
70794 Filderstadt  
Germany  
Phone: 0049 (0)7158 / 9 56 99-0  
Fax: 0049 (0)7158 / 9 56 99-10  
sounddesign@jehnert.de  
www.jehnert.com

For further products and detailed information as well as to  
learn more about our full range of products for passenger  
cars please visit our website.

**Welcome!**

A large, stylized image of a car speaker. The speaker is circular with a mesh grille. Overlaid on the speaker are several musical notes and a target symbol (a circle with a crosshair). The entire image is in a light, semi-transparent style.

**www.jehnert.com**